



77, Leighton Park, Bicton Heath, Shrewsbury, SY3 5FS
£950 Per Month



77, Leighton Park, Bicton Heath, Shrewsbury, SY3 5FS

£950 Per Month

VIRTUAL TOUR AVAILABLE: Spacious and most attractive modern two bedroom ground floor apartment in the prestigious surroundings of Leighton Park, a short distance to the west of Shrewsbury town centre and providing good access to Royal Shrewsbury Hospital and the ring road. Benefits from an allocated parking space and access to beautifully maintained communal grounds.

Available: 03/06/26

Description

Comprising: Communal entrance with intercom and shared with one other property, private entrance hall, large open plan kitchen and living room including appliances, master bedroom including fitted wardrobes, further double bedroom / home office with double aspect windows, bathroom including shower. Gas central heating, double glazing. Allocated parking space. EPC C



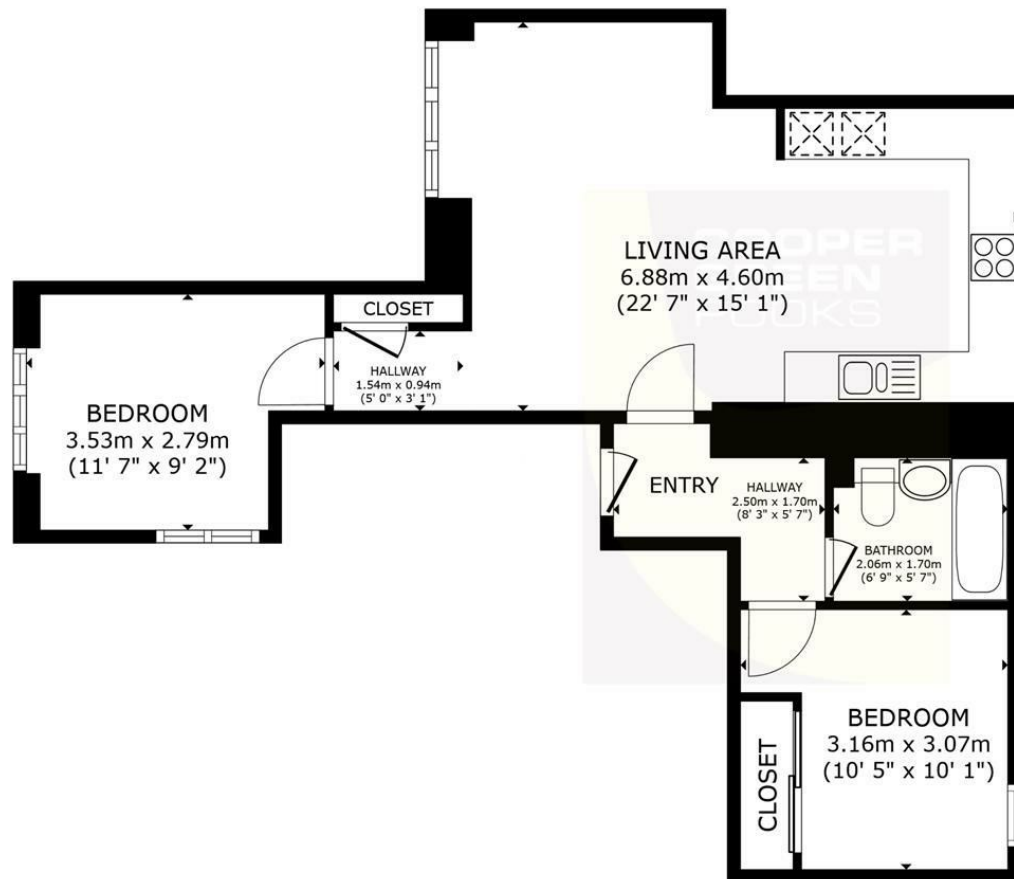
Unfurnished

Council Tax Band: B

Available: 3rd June 2026

EPC: C

Floor Plans



FLOOR PLAN

GROSS INTERNAL AREA
FLOOR PLAN 58.2 m² (626 sq.ft.)
TOTAL : 58.2 m² (626 sq.ft.)

SIZES AND DIMENSIONS ARE APPROXIMATE, ACTUAL MAY VARY.

These particulars, whilst believed to be accurate are set out as a general outline only for guidance and do not constitute any part of an offer or contract. Intending purchasers should not rely on them as statements of representation of fact, but must satisfy themselves by inspection or otherwise as to their accuracy. No person in this firm's employment has the authority to make or give any representation or warranty in respect of the property.

3 Barker Street, Shrewsbury, Shropshire, SY1 1QF

Tel: 01743 276666 Email: lettings@cgpooks.co.uk www.cgpooks.co.uk