



Guide Price
£210,000

Leasehold

1x  1x  1x 

**Guinevere Point,
Waterhouse Avenue,
Maidstone, Kent ME14**

OVER 60?

Secure this property
for up to **59% less!**

Wards
Helping you move forwards



Main features

- 9th floor apartment with views
- Immaculately presented throughout
- Lift access
- Situated within walking distance to the town centre
- Parking space

Accommodation

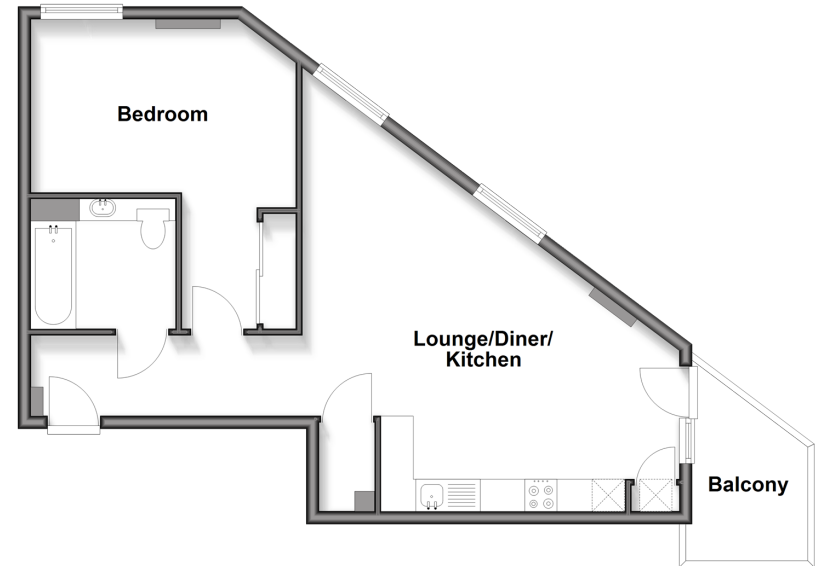
NINTH FLOOR

Hallway
 Lounge/Diner/Kitchen: 26'0 x 15'0 (7.93m x 4.58m)
 Bedroom: 15'0 x 13'0 (4.58m x 3.97m)
 Bathroom

OUTSIDE

Communal Areas
 Parking

Ninth Floor
 Approx. 52.6 sq. metres (566.1 sq. feet)



Call Maidstone - 01622 683737 ■ wardsofkent.co.uk

■ Legal advice should be taken to verify fixtures/fittings, planning, alterations and/or lease details
 ■ Through a Homewise Home For Life Plan people aged 60+ can secure this property for up to 50% less, by purchasing a Lifetime Lease.

■ Appliances & services are untested, dimensions are approximate and floor plans are not to scale



13159236/20251120/AS/AS