



Rylands Road

Southend-on-Sea

£185,000

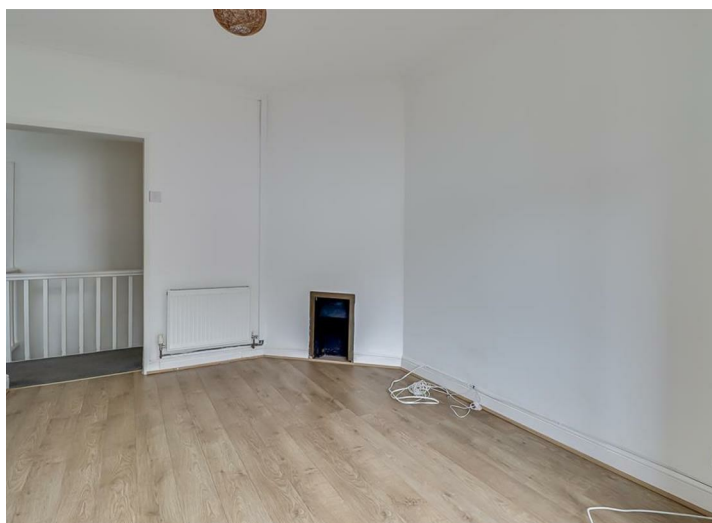
Guide Price



* £185,000 - £195,000 * No Onward Chain *
Share of Freehold * Well-presented two-
bedroom first floor flat offering a generous
South-facing garden and a convenient
location close to transport links and local
amenities.

- Two Bedroom First Floor Flat with No Onward Chain
- Share of Freehold with a Long Lease
- Private Entrance
- Bay Fronted Lounge with Feature Fireplace
- Good-Sized Kitchen
- Double Bedroom with Built-in Wardrobes
- Three Piece Bathroom
- Generous South Facing Garden
- Low-Maintenance Outdoor Space
- Double Glazing and Electric Heating

Rylands Road



This attractive first floor flat with a long lease and private entrance provides comfortable and well-proportioned living space throughout. The property comprises an entrance hall with stairs rising to the landing, leading into a bay-fronted lounge featuring a charming fireplace. A good-sized kitchen offers ample workspace, while the accommodation includes one double bedroom with built-in wardrobes and a further single bedroom. A modern three-piece bathroom completes the interior. Externally, the property benefits from a generous, low-maintenance South-facing garden, ideal for outdoor enjoyment. Additional advantages include double glazing and electric heating.

Situated on Rylands Road in Southend-on-Sea, the property is within the catchment area for well-regarded local schools. The home is conveniently located close to bus links, Prittlewell Train Station, and a range of amenities, making it an ideal choice for commuters and families alike.

Two Bedroom First Floor Flat

Private Entrance

Landing

Lounge

13'8 x 9'6

Kitchen

11'1 x 7'9

Bedroom One

11'7 x 10'4

Bedroom Two

11'8 x 6'9

Three Piece Bathroom

5'5 x 4'8

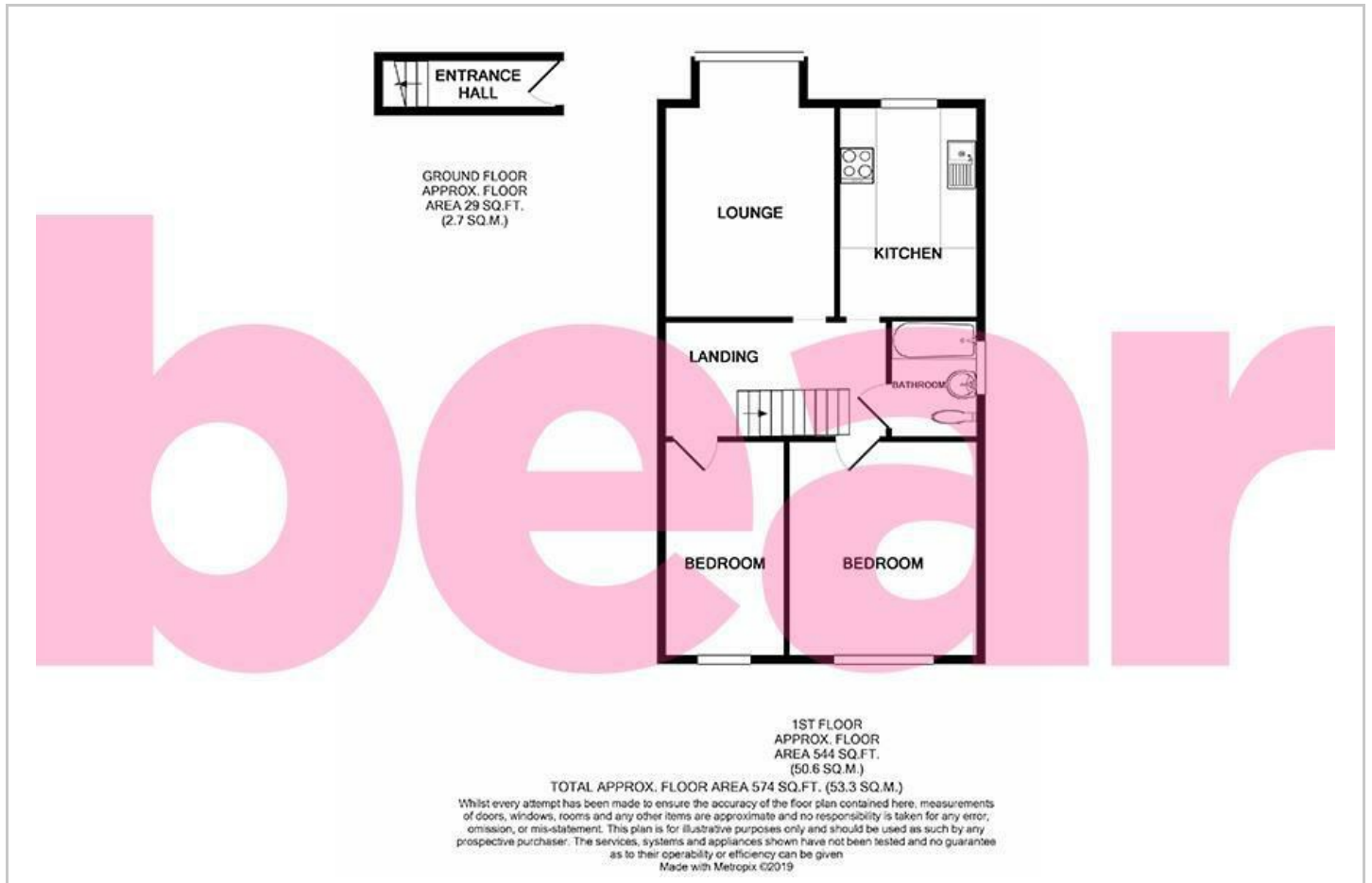
Private South Facing Garden



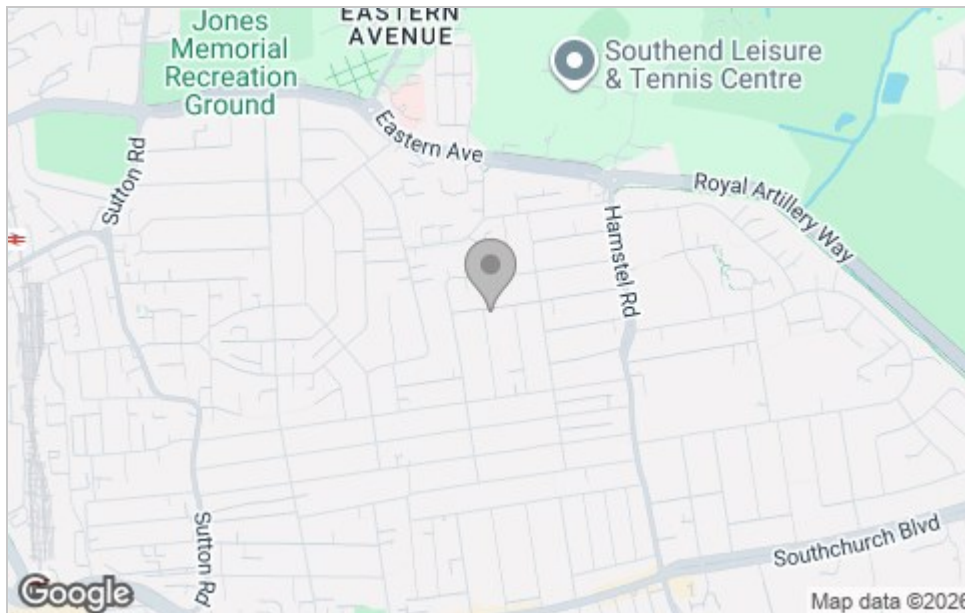
Southend-on-Sea



Floor Plan



Area Map



Viewing

Please contact our Southend-on-Sea Office on 01702 811211 if you wish to arrange a viewing appointment for this property or require further information.

These particulars, whilst believed to be accurate are set out as a general outline only for guidance and do not constitute any part of an offer or contract. Intending purchasers should not rely on them as statements of representation of fact, but must satisfy themselves by inspection or otherwise as to their accuracy. No person in this firm's employment has the authority to make or give any representation or warranty in respect of the property.

204 Woodgrange Drive, Southend-on-Sea, Essex, SS1 2SJ

Office: 01702 811211 info@bearestateagents.co.uk <https://www.bearestateagents.co.uk>

Energy Efficiency Graph

