



LONSDALE ROAD

BARNES, SW13

£499,950
LEASEHOLD

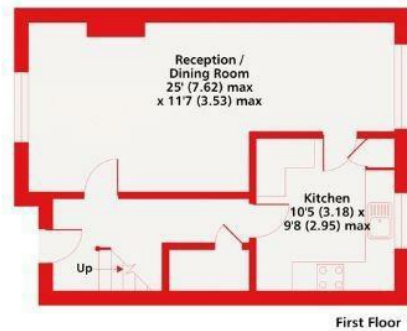
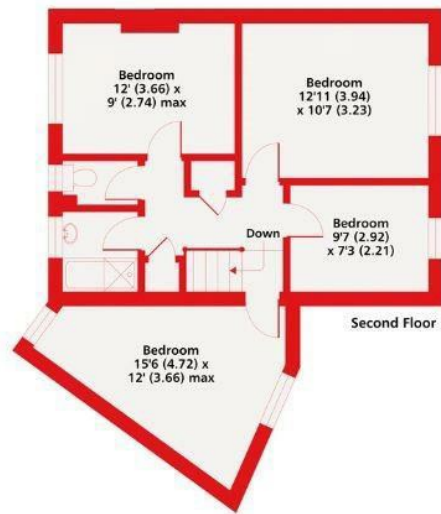
This duplex apartment on Lonsdale Road in Barnes is arranged over two levels and includes four well-sized bedrooms, along with bright, well-proportioned living space.

The property offers a straightforward layout with generous room sizes throughout, creating a comfortable setting with plenty of natural light. The living areas provide enough space for both relaxing and entertaining, while the bedrooms are evenly distributed across the apartment.

Lonsdale Road is one of Barnes' more desirable addresses, known for its attractive period properties and quiet residential feel. The area itself has a strong reputation for its green surroundings, including nearby riverside walks and open spaces.

A good selection of independent shops, cafés and restaurants can be found close by, along with everyday amenities. Barnes also benefits from convenient transport links, making it easy to get into central London while still enjoying a more relaxed, village-style setting.

PMP | INTERNATIONAL



Lonsdale Road SW13
 Approximate Area = 1069 sq ft / 99.3 sq m
 For identification only - Not to scale



Energy Efficiency Rating		
	Current	Potential
Very energy efficient - lower running costs		
(92 plus) A		
(81-91) B		
(69-80) C		
(55-68) D		
(39-54) E		
(21-38) F		
(1-20) G		
Not energy efficient - higher running costs		
England & Wales	EU Directive 2002/91/EC	

Agents Note: Whilst every care has been taken to prepare these particulars, they are for guidance purposes only. All measurements are approximate and are for general guidance purposes only and whilst every care has been taken to ensure their accuracy, they should not be relied upon and potential buyers/tenants are advised to recheck the measurements

London
 PMP International
 94 Belsize Lane
 Belsize Park
 London
 NW3 5BE

020 7701 2878
 info@pmpi.co.uk
 www.pmpi.co.uk

PMP | INTERNATIONAL