

MANOR

DANESCOTE DANES HILL
DUNS TEW | OX25 6JD



A four-bedroom detached residence offering just under 3,000 square feet of well presented living accommodation, set within generous gardens that back onto open fields with stunning countryside views.





The ground floor features a welcoming entrance hall leading to versatile reception spaces, including a comfortable lounge that connects to a cosy sitting room with fireplace and French doors opening onto the garden.

The heart of the home is a spacious kitchen/dining room fitted with marble worktops, a central island with induction hob, and integrated appliances, flowing seamlessly into a light-filled orangery with bifold doors. Additional practical spaces include a boot room, cloakroom, and utility room.

Upstairs, the master suite boasts views onto open fields, a generous dressing room, and contemporary ensuite shower room. Three further well-proportioned bedrooms and a family bathroom complete the first floor, with bedroom three offering mezzanine space.

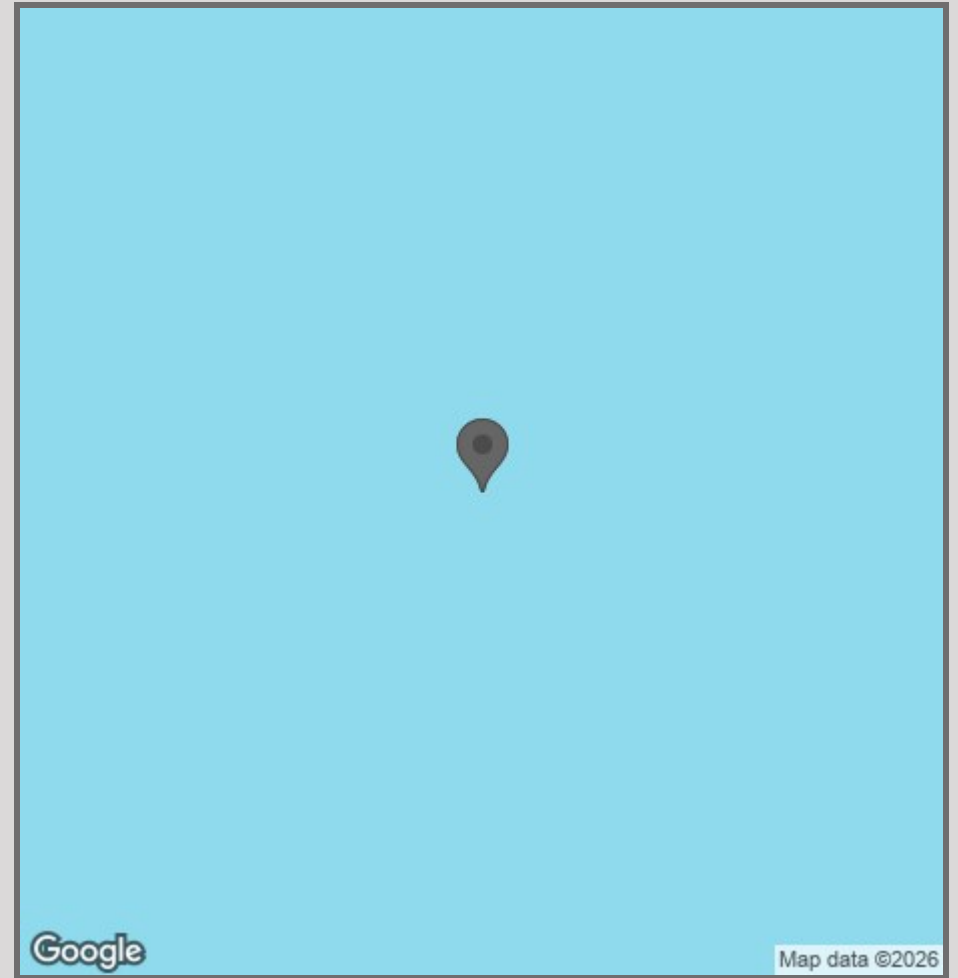
Outside, gates open onto a sweeping gravel driveway. The detached home office provides the perfect workspace with power and internet connectivity. The private rear garden features lawns, borders, and paved areas, all backing onto peaceful open countryside.

Located in the charming village of Duns Tew with excellent access to Banbury, Bicester, and Oxford, with London just 43 minutes away by train. Soho Farmhouse nearby





- Detached Home
- Four Bedrooms
- Private Garden
- Stunning Countryside Views
- Excellent Transport Links
- Soho Farmhouse Nearby



42 High Street
Woodstock
OX20 1TG

01865 955500

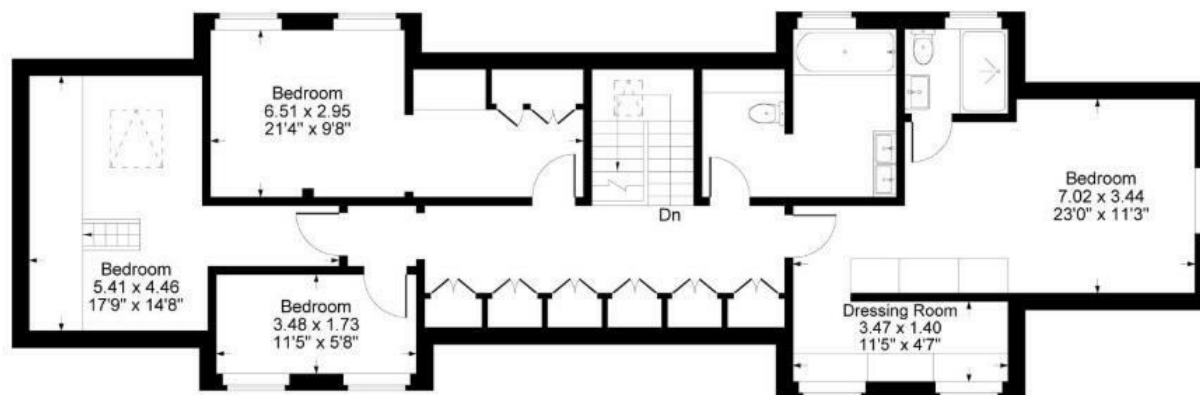
hello@manoroxford.com

www.manoroxford.com

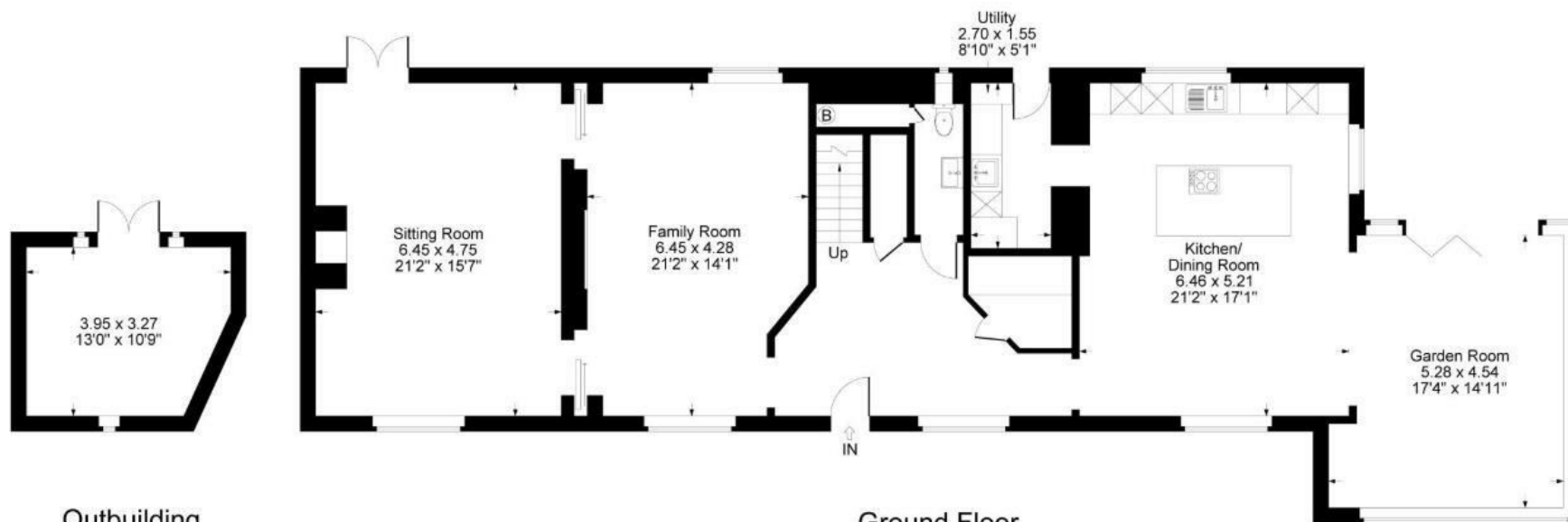
MANOR



Approximate Gross Internal Area
Ground Floor = 151.47 sq m / 1630 sq ft
First Floor = 99.44 sq m / 1070 sq ft
Outbuilding = 12.00 sq m / 129 sq ft
Total Area = 262.91 sq m / 2829 sq ft
Illustration for identification purposes only,
measurements are approximate, not to scale.



First Floor



Ground Floor

MANOR