

Todds Green, Stevenage, SG1 2JE

Guide Price £650,000

🛏 2 🚗 2 🛋 3

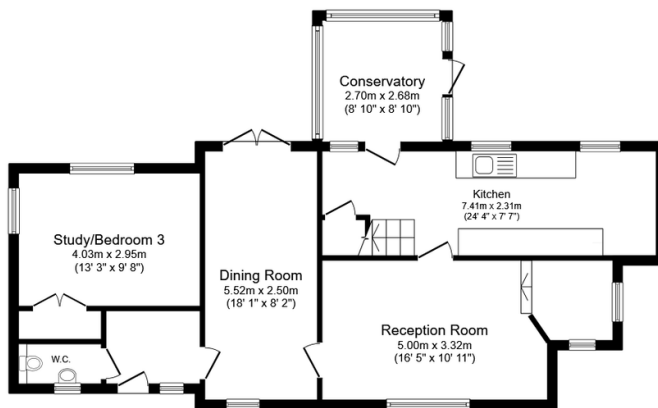


Thatched Cottage, Stevenage Road, Todds Green

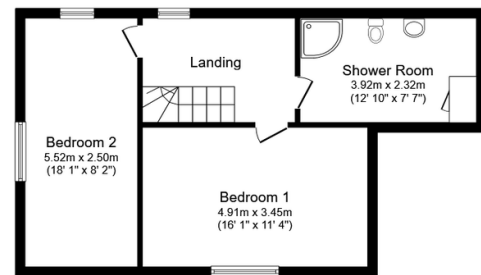
A charming and characterful chocolate box cottage dating back centuries. Set on a wraparound plot approaching 0.25 acres, the property has 1,300sqft of accommodation alongside garages and workshop space.

Key Features

- Chocolate box cottage dating back centuries
- Wraparound plot approaching 0.25 acres
- C.1,300sqft of internal accommodation
- Multiple reception rooms, two/three double bedrooms
- Located between Stevenage and Hitchin
- Grade II listed, with extensive character
- Outbuilding with garaging and workshop
- Farmhouse-style kitchen/breakfast room
- Four-piece bathroom, downstairs wet room
- Balance of countryside and connection



Ground Floor
Floor area 77.3 sq.m. (833 sq.ft.)



First Floor
Floor area 47.6 sq.m. (512 sq.ft.)

Total floor area: 124.9 sq.m. (1,344 sq.ft.)

This floor plan is for illustrative purposes only. It is not drawn to scale. Any measurements, floor areas (including any total floor area), openings and orientations are approximate. No details are guaranteed, they cannot be relied upon for any purpose and do not form any part of any agreement. No liability is taken for any error, omission or misstatement. A party must rely upon its own inspection(s). Powered by www.Propertybox.io