



Gloucester Street
London, SW1V

CHESTERTONS



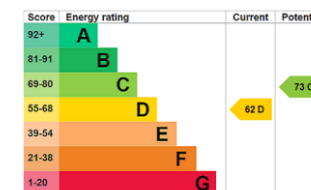


A bright ground floor period conversion in this handsome stucco fronted building located within Pimlico. The property comprising a large reception room with original period features, double bedroom with built in storage, separate kitchen and a spacious family bathroom. The property further benefits from share of freehold and is offered with no onward chain.

Gloucester Street is conveniently located for access to the shops, cafes and restaurants of Pimlico, Belgravia and Chelsea and excellent transport links found at Victoria (Victoria, Circle and District underground lines, Mainline station and Gatwick Express).

- Bright and spacious ground floor period conversion in an attractive stucco-fronted building
- Generous reception room, double bedroom, separate kitchen, and family bathroom
- Share of freehold
- Offered with no onward chain
- Prime location close to the shops, cafés, and restaurants of Pimlico, Belgravia, and Chelsea
- Excellent transport links via nearby Victoria Station (Underground, National Rail & Gatwick Express)

Offers in Excess of £500,000



Tenure: Share of Freehold - 999 Years from 25 December 1997

Service Charge: £1350 Per Annum Including £700 Reserve Fund

Ground Rent: Peppercorn

Local Authority: City of Westminster

Council Tax Band: E

Chestertons Westminster & Pimlico Sales

105 Wilton Road

London

SW1V 1DZ

westminster@chestertons.co.uk

020 3040 8201

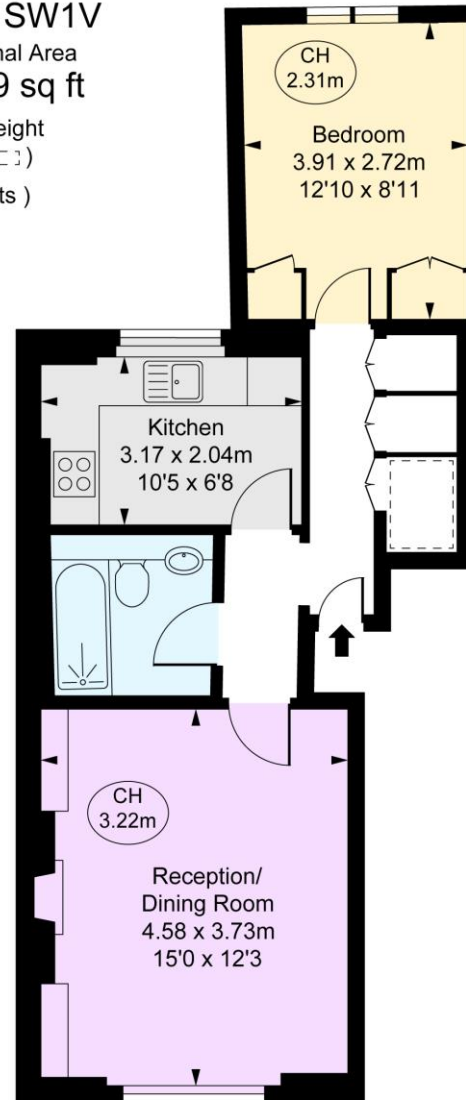
chestertons.co.uk

Gloucester Street, SW1V

Approximate Gross Internal Area
46.37 sq m / 499 sq ft

(Including restricted height
under 1.5m [-----])

(CH = Ceiling Heights)



Ground Floor



This plan is not to a given scale. A detailed layout plan to scale for valuation is available on request. All measurements and areas are within 1% tolerance and have been prepared in accordance with industry standards as defined in the RICS Code of Measuring Practice
© Fulham Performance

Chesterton UK Services Limited trading as Chestertons for themselves and for the vendor of this property whose agents they are, give notice that (i) these particulars do not constitute any part of an offer or contract, (ii) all statements contained within these particulars are made without responsibility on the part of Chestertons or the vendor, (iii) whilst made in good faith, none of the statements contained within these particulars are to be relied upon as a statement or representation of fact, (iv) any intending purchasers must satisfy themselves by inspection or otherwise as to the correctness of each of the statements contained within these particulars, (v) the vendor does not make or give either Chestertons or any person in their employment any authority to make or give representation or warranty whatsoever in relation to this property. Wide angle lenses may be used. ©Copyright Chestertons | Chesterton UK Services Limited | Registered Office 40 Connaught Street, Hyde Park, London W2 2AB Registered Company Number 05334580.



This paper is
100% recyclable