



Churchill Road, NW2

Leasehold - £430,000

Discover this characterful one-bedroom ground floor apartment located on Churchill Road.

The property features an inviting reception room with high ceilings, original cornicing and a large bay window that fills the room with natural light. Exposed wood flooring runs throughout the living space, enhancing the property's period charm.

The kitchen is fitted with sage cabinetry and classic white subway-tiled splashbacks, with French doors opening onto a substantial private 27ft rear garden which could easily accommodate a home office/studio subject to the correct planning consents. Offering an exceptional outdoor space for relaxation and entertaining, the garden also presents potential to extend the property and reconfigure the accommodation to create a two-bedroom home, subject to the necessary planning permissions and consents.

The layout further comprises a double bedroom overlooking the garden and a three-piece bathroom finished in neutral tones.

Ideally situated, the property is just a short walk from Willesden Green Station (Jubilee Line, Zone 2), providing excellent connections across London.

Viewing is highly recommended.



020 7328 2828

enquiries@cameronsstiff.co.uk

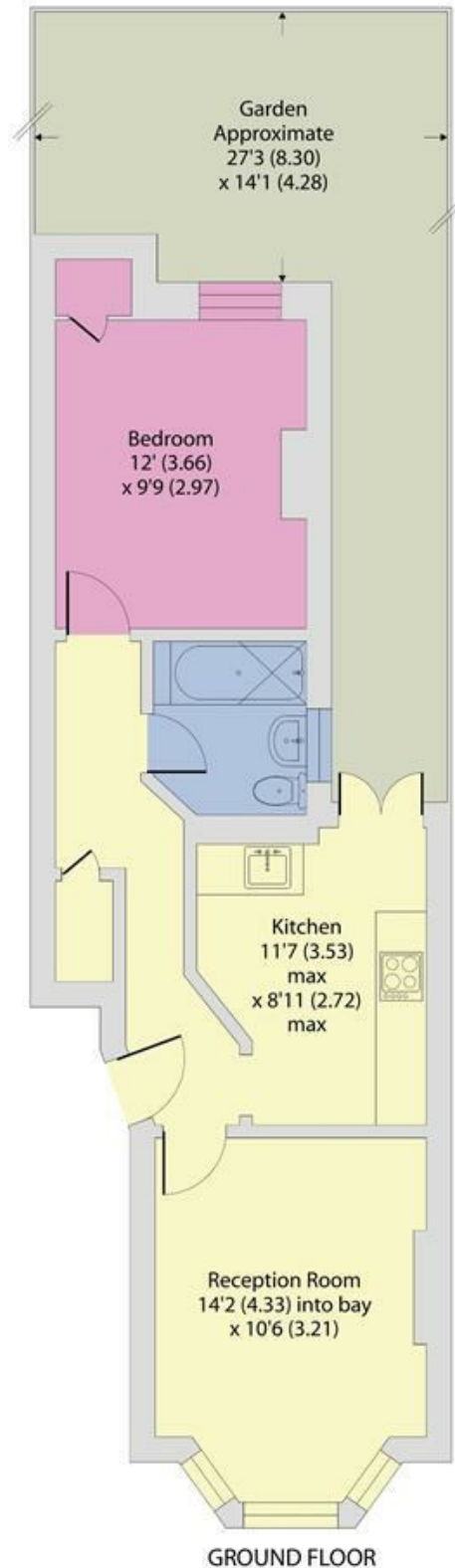
cameronsstiff.co.uk



Churchill Road, London, NW2

Approximate Area = 492 sq ft / 45.7 sq m

For identification only - Not to scale



EPC: C

Ref: 19764529



Floor plan produced in accordance with RICS Property Measurement 2nd Edition, Incorporating International Property Measurement Standards (IPMS2 Residential). © n'checon 2026. Produced for Camerons Stiff & Co. REF: 1457945

