



drake & co
ESTATE AGENTS



104A MAULDETH ROAD WEST MANCHESTER

£1,250 PCM

Accommodation Available 29th June 2026, £1,250pcm

This two-bedroom flat has recently been redecorated and offers two fully furnished double bedrooms, a large open-plan dining kitchen, a spacious lounge, and a shared bathroom. Situated in the popular area of Withington, the property benefits from excellent public transport links and easy access to the city centre and student areas like Fallowfield, with a range of local amenities, shops, and cafes nearby, making it ideally suited for two students or professionals seeking both comfort and convenience.

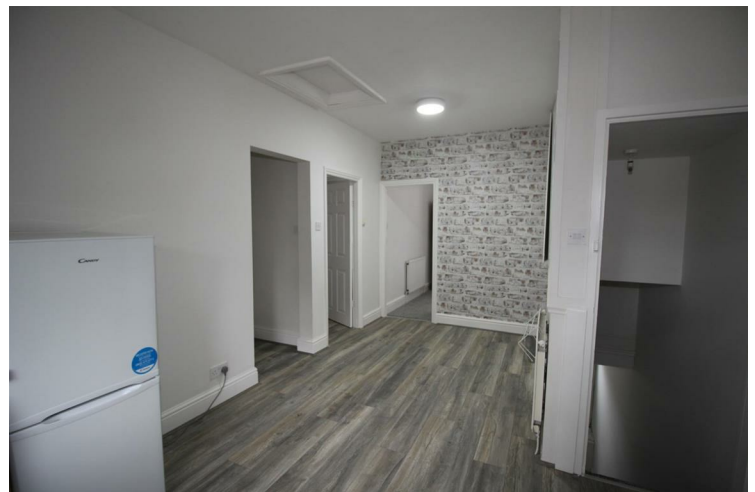
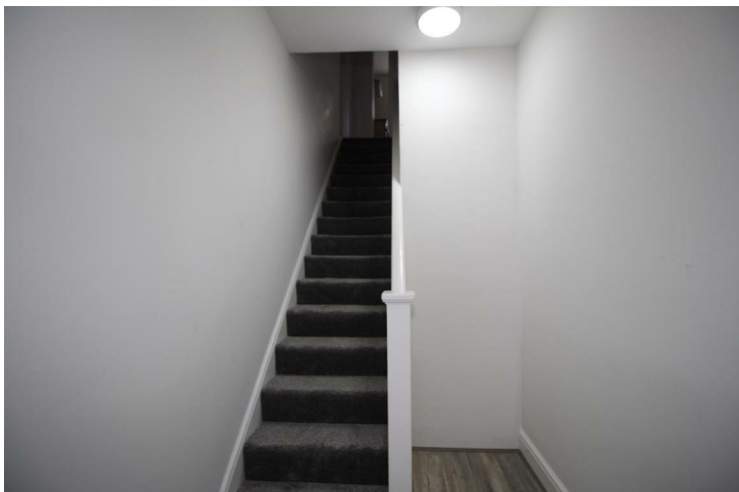
Property Reference: P1420

*Bills Paid Ltd manage the utilities at the property, their Inclusive Bills Package covers: gas, electric, broadband, water and a TV Licence, for an additional £33ppw (terms and conditions apply). This property has a water meter.

- 12 month tenancy
- Deposit equivalent to 5x weekly rent
- Holding deposit equivalent to 1x weeks rent due to secure the property, this goes towards the total deposit due
- Rent and utilities calculated per calendar month (not four weeks basis)

Don't miss out, contact the office and quote the property reference above to book your viewing today!

Disclaimer: These particulars are believed to be accurate but they are not guaranteed and do not form a contract. Any images, videos and/or floorplans on this brochure are for guidance purposes only and are not necessarily to scale.




- 2 Bedrooms • Flat • Withington • Fully furnished • 1 Bathroom • Newly redecorated • 24 Hour cover • Kitchen dining • Inclusive Bills £33pppw







Energy Efficiency Rating		
	Current	Potential
<i>Very energy efficient - lower running costs</i>		
(92 plus) A		
(81-91) B		
(69-80) C	70	73
(55-68) D		
(39-54) E		
(21-38) F		
(1-20) G		
<i>Not energy efficient - higher running costs</i>		
England & Wales		EU Directive 2002/91/EC 

EPC Rating: C Council Tax Band: A

Agents Note: Whilst every care has been taken to prepare these particulars, they are for guidance purposes only. All measurements are approximate and are for general guidance purposes only and whilst every care has been taken to ensure their accuracy, they should not be relied upon and potential buyers/tenants are advised to recheck the measurements

Drake & Co
 Anson Parade
 161a Dickenson Road
 Rusholme
 Manchester
 M14 5HZ

0161 224 2134
 info@drakes.co.uk
<https://www.drakes.co.uk/>

