



Dale View

Hove, BN3 8LB

Asking price £595,000

Chalet bungalow located in the very popular Hangleton area of Hove. The property is well laid out and has many features including very pretty South facing rear garden, spacious lounge/dining room, well fitted kitchen and flexible accommodation over two floors.

Arranged over two floors, the accommodation within briefly comprises: 4 bedrooms, 2 bathrooms good size living room and separate kitchen.

In terms of outside space the property boasts a lawned front garden with side access to the very pretty paved and lawned south facing rear garden. Other benefits include gas central heating, double glazing and the lovely setting within the lower section of Dale View. Conveniently located close to local shops, bus services, health centre and schools.



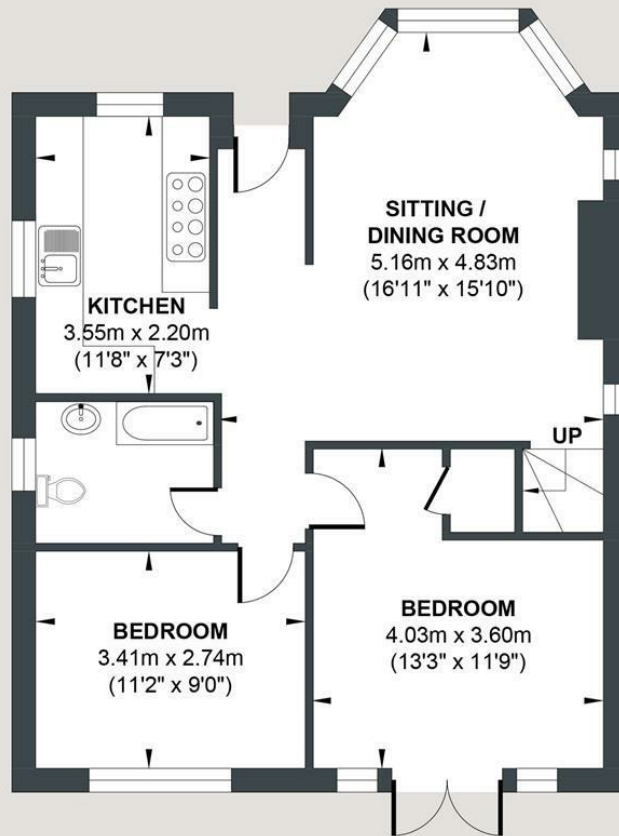
- Detached
- 2 Bathrooms
- Close to Schools
- No Chain
- 4 Bedrooms
- Rear Garden
- Close to Greenlees Park
- Separate Kitchen

Energy Efficiency Rating		
	Current	Potential
Very energy efficient - lower running costs		
(92 plus) A		
(81-91) B		
(69-80) C		
(55-68) D		
(39-54) E		
(21-38) F		
(1-20) G		
Not energy efficient - higher running costs		
	33	74
England & Wales		
EU Directive 2002/91/EC		



DALE VIEW

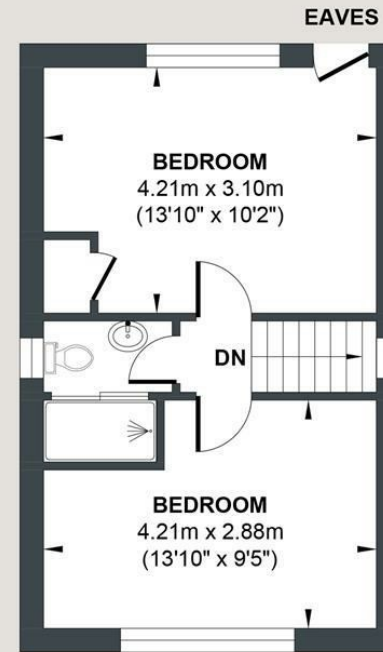
Approx. Gross Internal Floor Area = 90.79 sq m / 977.25 sq ft
Illustration for identification purposes only, measurements are approximate, not to scale.



GROUND FLOOR

Approximate Floor Area

656.38 sq ft
(60.98 sq m)



FIRST FLOOR

Approximate Floor Area

320.87 sq ft
(29.81 sq m)



Foster & Co and their clients give notice that:

These sales particulars do not constitute any part of an offer of contract and are for guidance for prospective purchases only and should be not relied upon as a statement of fact.

We are not to be held responsible for material information that has not been given to us by our client at the time of marketing.

All measurements are approximate



