



Guide Price
£550,000

Freehold

5x  3x  2x 

**Pennine Way,
Downswood, Maidstone,
Kent ME15**

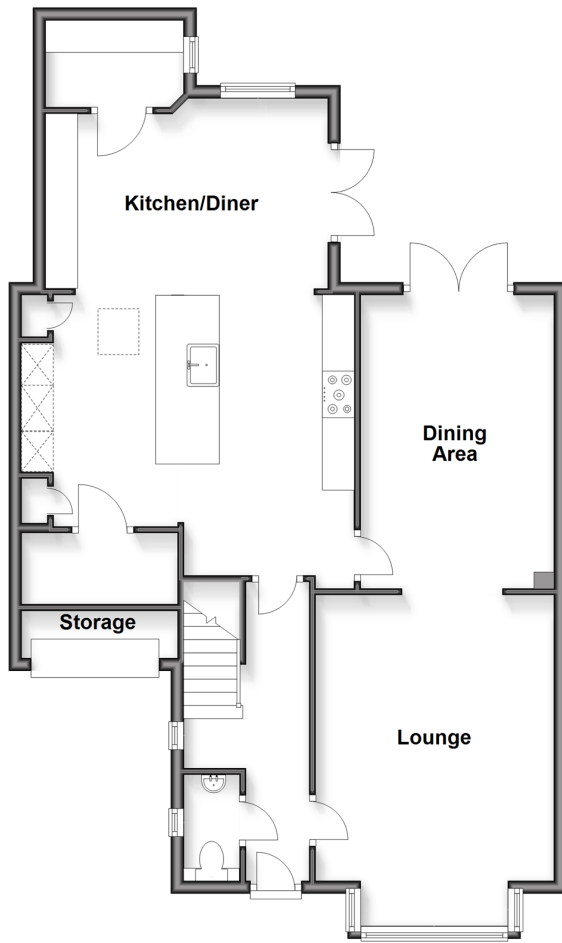
OVER 60?

Secure this property
for up to **59% less!**

Wards
Helping you move forwards

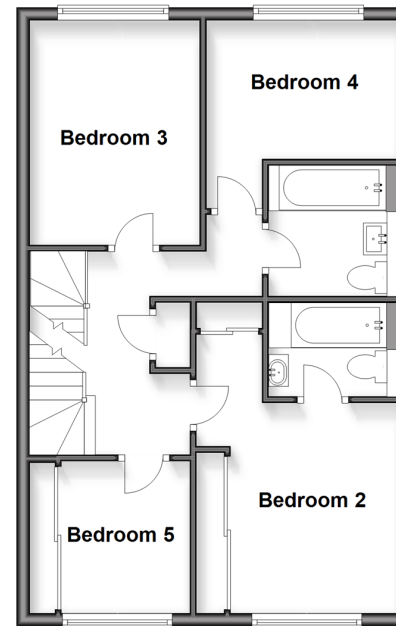
Ground Floor

Approx. 85.6 sq. metres (921.4 sq. feet)



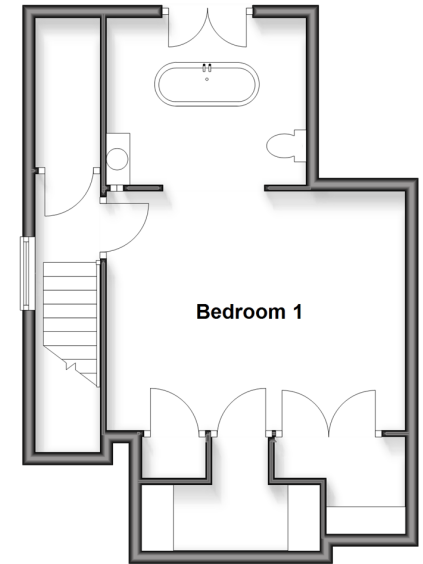
First Floor

Approx. 53.9 sq. metres (580.0 sq. feet)



Second Floor

Approx. 40.9 sq. metres (440.3 sq. feet)



Accommodation

GROUND FLOOR

Entrance Hall

Cloakroom

Lounge: 17'7 x 12'3 (5.36m x 3.74m)

Dining Area: 15'1 x 11'5 (4.60m x 3.48m)

Kitchen/Diner: 14'6 x 10'10 (4.42m x 3.30m)

FIRST FLOOR

Landing

Bedroom 2: 10'8 x 10'4 (3.25m x 3.15m)

En-Suite Bathroom

Bedroom 3: 11'6 x 8'8 (3.51m x 2.64m)

Bedroom 4: 9'9 x 7'2 (2.97m x 2.19m)

Bathroom

Bedroom 5: 8'3 x 7'8 (2.52m x 2.34m)

SECOND FLOOR

Landing

Bedroom 1: 15'4 x 12'3 (4.68m x 3.74m)

En-Suite Bathroom: 10'3 x 8'4 (3.13m x 2.54m)

OUTSIDE

Rear Garden

Front Garden

Driveway

Office/Gym



Main features

- Stunning condition throughout
- Massively extended throughout
- Bedroom 1 with walk-in-wardrobe and en-suite bathroom on the entire second floor
- Large kitchen with utility room and pantry
- Landscaped rear garden with office/gym to the rear



Nearest Schools

Primary Schools: Madginford Park Junior School 0.3 miles, Greenfields Community Primary 0.7 miles, Roseacre Junior School 0.8 miles

Secondary Schools: Valley Park Community School 1.5



Transport Information

Train Stations: Bearsted 1.1 miles, Maidstone West 2.3 miles, Maidstone East 2.3 miles



Address

Pennine Way, Downswood, Maidstone, Kent ME15



Directions

For directions to this property please contact us.



Wards
Helping you move forwards

Call Bearsted Branch 01622 730955 ■ wardsofkent.co.uk



- Legal advice should be taken to verify fixtures/fittings, planning, alterations and/or lease details
- Appliances & services are untested, dimensions are approximate and floor plans are not to scale
- Through a Homewise Home For Life Plan people aged 60+ can secure this property for up to 59% less, by purchasing a Lifetime Lease

EPC RATING	CURRENT:	POTENTIAL:
	C(70)	C(76)

12326114/20260131/SG/LNR