



NEWINGTON
LONDON

1 Bedrooms

Apartment

Located in London

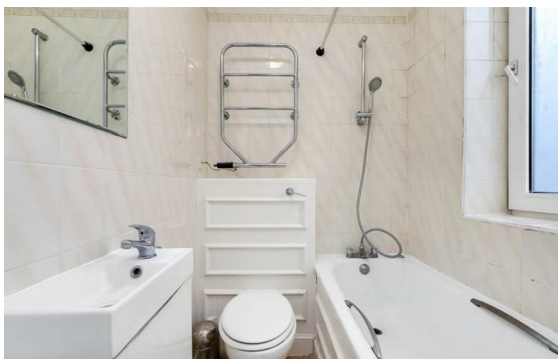
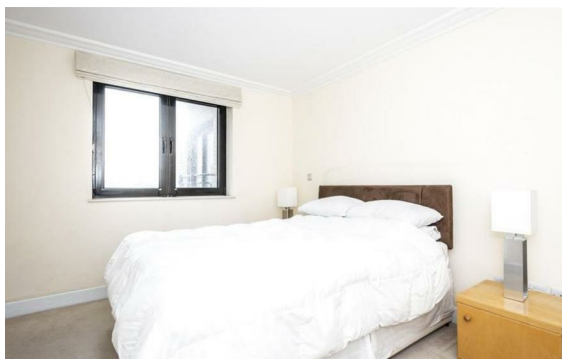
£500 Per Month



info@newingtonstates.com

<http://www.newingtonstates.com>

020 7724 2233



NEWINGTON LONDON

60 Upper Montagu Street

London

W1H 1SN

020 7724 2233

info@newingtonstates.com

Set on the third floor, this well-presented one-bedroom apartment benefits from a generous private terrace overlooking beautifully landscaped gardens.

The property is ideally situated in a central location, just moments from Hyde Park and within easy walking distance of Marble Arch and Oxford Street.

EPC rating: D

Energy Efficiency Rating: D

Agents Note: Whilst every care has been taken to prepare these particulars, they are for guidance purposes only. All measurements are approximate and are for general guidance purposes only and whilst every care has been taken to ensure their accuracy, they should not be relied upon and potential buyers/tenants are advised to recheck the measurements.

<http://www.newingtonstates.com>