



7 Blumenthal Close

Corby, NN17 3GL



Simpson West

Simpson West Lettings are pleased to offer this both modern and rarely available two bedroom semi detached property situated within the popular village of Weldon. The property occupies a desirable position in a quiet cul-de-sac whilst being within walking distance to the new local school, shops and other amenities. Features include an entrance hall, cloakroom w/c, a modern fitted kitchen dining room and the living room with doors leading to the rear garden. To the first floor there are two generous double bedrooms and a fully fitted bathroom. To the rear is a spacious garden that is fully enclosed offering a degree of privacy. To the front is a double driveway. Early viewings are highly advised. Energy rating B. Council Tax Band B.



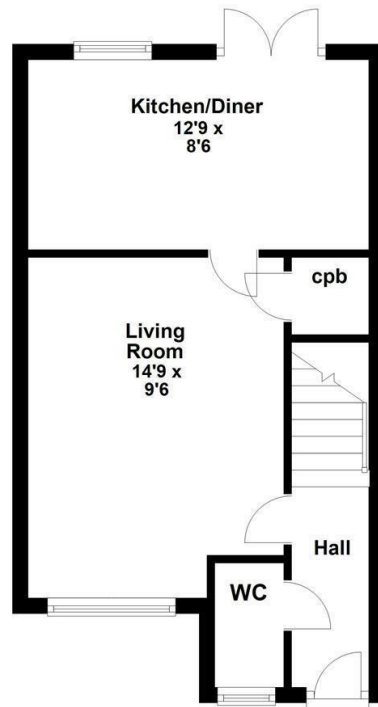
£1,050 Per Calendar Month

 2  1  nul



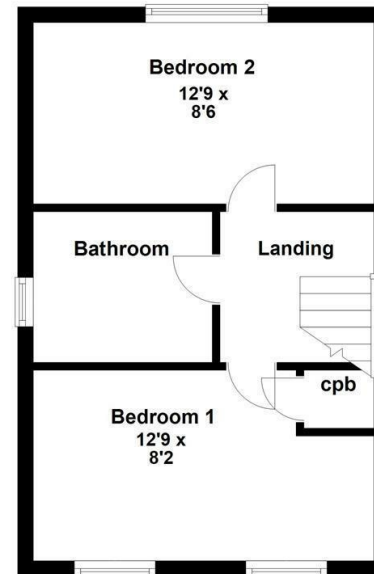
Ground Floor

Approx. 32.4 sq. metres (348.7 sq. feet)



First Floor

Approx. 30.1 sq. metres (324.4 sq. feet)



Floor plan not to scale - for guidance purposes only.
Plan produced using PlanUp.



Energy Efficiency Rating		
	Current	Potential
<i>Very energy efficient - lower running costs</i>		
(92 plus) A		
(81-91) B		
(69-80) C		
(55-68) D		
(39-54) E		
(21-38) F		
(1-20) G		
<i>Not energy efficient - higher running costs</i>		
England & Wales	EU Directive 2002/91/EC	



When you buy with Simpson West, you know **you'll be in safe hands**. From the moment you walk through our doors, we'll make you **feel truly welcome**. Our sales consultants and financial advisors will take you through **every step of the process**, offering **free expert advice** along the way, from help choosing the right mortgage and insurance through to finding your conveyancer. And if you need help selling your home too, **with over 20 years of local experience, you can trust us to get you moving**.



**Simpson
West**

Making Every
Journey Personal



01536 202007

info@simpsonwest.co.uk

<https://www.simpsonwest.co.uk/>

64 Corporation Street, Corby, Northants, NN17 1NH