



WOOD WHARF APARTMENTS, SE10

£2,350 per month

Modern Apartment
Two Bedrooms
River Front
Juliet Balcony
Open-plan Kitchen
Allocated Parking space

@marshandparsons
marshandparsons.co.uk

MARSH &
PARSONS



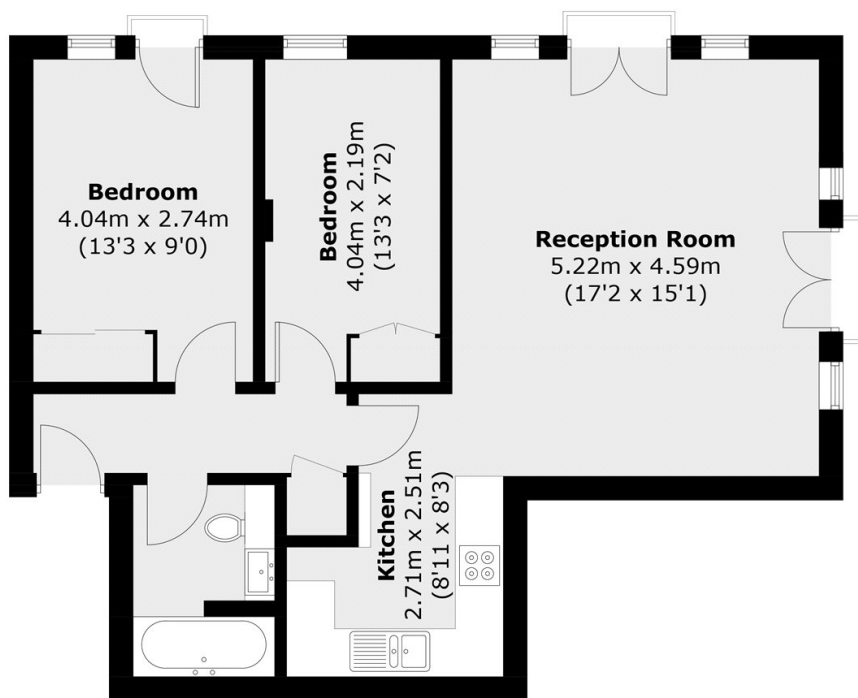
ABOUT THE PROPERTY

A modern two bedroom apartment located along the River Thames within walking distance of Greenwich town centre.

Ideally located within minutes from Greenwich mainline and DLR stations, as well as the Cutty Sark DLR station. The property is also very close by to Greenwich town centre where you will find the historic market and Greenwich Park. Council Tax Band: D



STEP INSIDE WOOD WHARF APARTMENTS



Total area (approx.): 63.5 sq. m (683.5 sq. ft)

Greenwich
020 8815 2230

Energy Rating: D We aim to make our particulars both accurate and reliable. However, they are not guaranteed; nor do they form part of an offer or contract. If you require clarification on any points then please contact us, especially if you're traveling some distance to view. Please note that appliances and heating systems have not been tested and therefore no warranties can be given as to their good working order

MARSH &
PARSONS