

ANTHONY JAMES MANSER

Residential Sales & Lettings



London Road

Isleworth, TW7 5AJ

£499,000

Leasehold

Council Tax Band C

This is a fabulous modern apartment comprising the whole of the ground floor of this impressive detached house. The accommodation is both flexible and adaptable and comprises a spacious reception room with feature coved ceiling and large round bay window. There are two double bedrooms, the second of which faces the garden. The kitchen and dining room are of excellent size and make for a lovely eating and entertaining area. The dining area has double doors to the garden. There is a bathroom with a large walk in shower and vanity unit with basin and WC. The private rear garden is stunning and has been landscaped and features a gazebo. We have included photographs taken during the Summer to truly showcase this area which is fully stocked with plants. There is a garage to the rear which is accessed via Hartham Road. In total this apartment boasts approximately 1100 sq ft/103 sq mtr of accommodation. We look forward to showing you this home.

Lease Details: 99 years from 25 March 2006 - Ground rent - £200 per annum approximately.

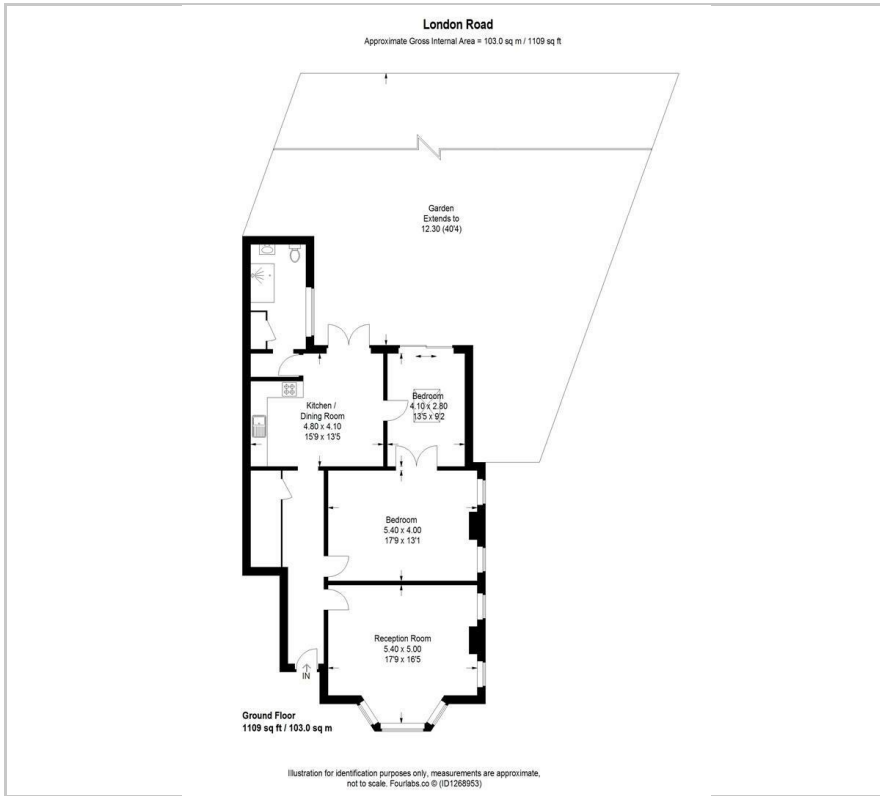
Viewing

Please contact our Sales Office on 020 8847 0488 if you wish to arrange a viewing appointment for this property or require further information.

- This is a Fabulous Modern Apartment
- Comprising the Whole of the Ground Floor of a Imposing Detached Property
- Impressive Reception Room with Beautifully Light Bay Window
- Gorgeous Kitchen & Dining Area with Double Doors to Garden
- Large Bathroom with Walk in shower
- Two Double Bedrooms
- Flexible and Adaptable Accommodation
- Stunning Rear Garden, Landscaped with Gazebo
- Garage Accessed via Hartham Road
- Approximately 1100 SQ FT/103 SQ MTR



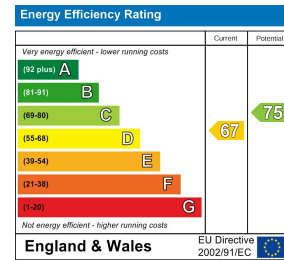
Floor Plan



Area Map



Energy Efficiency Graph



These particulars, whilst believed to be accurate are set out as a general outline only for guidance and do not constitute any part of an offer or contract. Intending purchasers should not rely on them as statements of representation of fact, but must satisfy themselves by inspection or otherwise as to their accuracy. No person in this firm's employment has the authority to make or give any representation or warranty in respect of the property.

542 London Road, Isleworth, TW7 4EP

Tel: 020 8847 0488 Email: sales@anthonyjamesmanser.co.uk <https://www.anthonyjamesmanser.co.uk/>