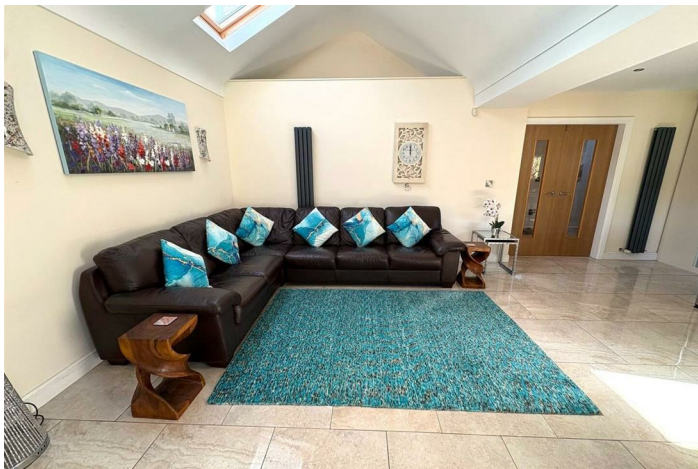


FREEHOLD



House - Detached (EPC Rating: C)

**WOODHEY PALACE HEY, NESS, NESTON,**

**CH64 4BH**

Offers over

**£575,000**

**HC** Hodgson Carr  
SALES & LETTINGS

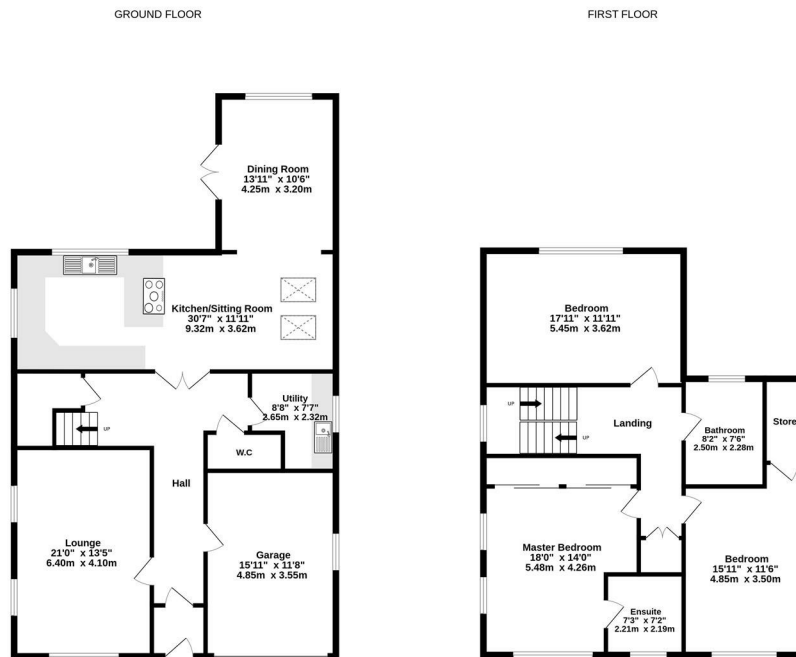


# 3 Bedroom House - Detached located in Neston

Hodgson Carr are delighted to bring to the market this exceptional modern detached home, set on one of the area's most prestigious private roads and surrounded by open fields and farmland.

This impressive property offers a remarkable sense of scale throughout, with generously proportioned rooms and an abundance of natural light. A magnificent entrance hallway leads through to an exceptionally large, bright living room, and features an eye-catching staircase with a beautiful stained-glass window at the top.

At the heart of the home is the outstanding open-plan kitchen, living and dining space. Designed to a top specification, this expansive room includes sleek contemporary fittings, skylights that flood the area with natural light, and French doors opening onto the elegant rear garden. A separate utility room and integral garage add further convenience.



WOODHEY, PALACE HEY, NESS

TOTAL FLOOR AREA: 2127 sq ft (197.6 sq m.) approx.

While every attempt is made to ensure the accuracy of this floorplan, measurements are approximate only and no responsibility is accepted by Metropac 2022 in relation to any error, omission or mis-statement. The plan is for illustrative purposes only and should be used as such by any prospective purchaser. Made with Metropac ©2022

Council Tax Band

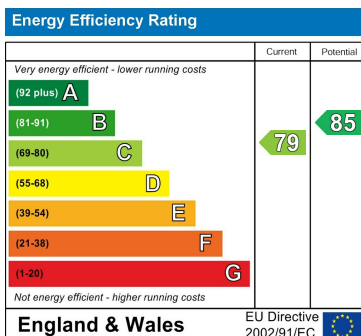
F

Energy Performance Graph

Call us on

0151 832 1888

info@hodgsoncarr.com



Agents Note: Whilst every care has been taken to prepare these particulars, they are for guidance purposes only. All measurements are approximate and are for general guidance purposes only and whilst every care has been taken to ensure their accuracy, they should not be relied upon and potential buyers are advised to recheck the measurements.