



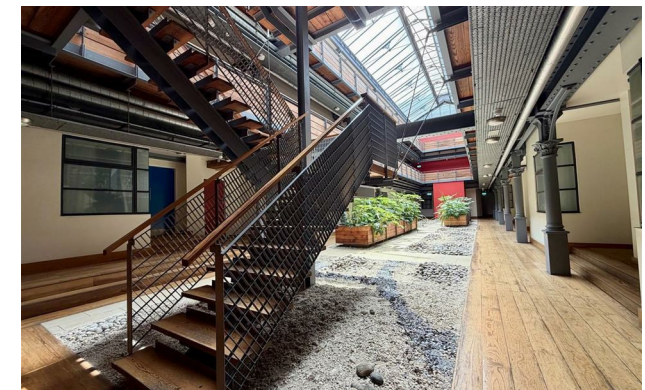
jordan fishwick

Apt 113 Smithfield, 44 Tib Street, M4 1LA
£1,400 Per Calendar Month



Smithfield Manchester M4 1LA

£1,400 Per Calendar Month



The Property

Available Early August. Jordan Fishwick presents this wonderful one bedroom apartment in the heart of Manchester's Northern Quarter. This stylish apartment is larger than average and offers an abundance of character. In brief the apartment comprises- entrance hallway leading to the bedroom & the large open plan living area, as well as a dining area (ideal for a studying or work from home). The bedroom is a good size and has a large wardrobe/closet. The kitchen is well equipped with integrated appliances. Furnished, No Parking. EPC rating D. Tax Band D.

Parking can be sourced via the NCP car park at an additional cost.

VIDEO/PHOTO OFFERS NOT ACCEPTED - PLEASE BOOK AN IN PERSON VIEWING

- Available Early August
- Frist Floor Apartment
- Furnsihed
- One Bedroom
- Tax Band D
- EPC Rating D
- Northern Quarter Location
- No parking
- City Centre



Energy Efficiency Rating		
	Current	Potential
Very energy efficient - lower running costs		
(92 plus) A		
(81-91) B		83
(69-80) C		
(55-68) D	65	
(39-54) E		
(21-38) F		
(1-20) G		
Not energy efficient - higher running costs		
England & Wales	EU Directive 2002/91/EC	





These particulars are believed to be accurate but they are not guaranteed and do not form a contract. Neither Jordan Fishwick nor the vendor or lessor accept any responsibility in respect of these particulars, which are not intended to be statements or representations of fact and any intending purchaser or lessee must satisfy himself by inspection or otherwise as to the correctness of each of the statements contained in these particulars. Any floorplans on this brochure are for illustrative purposes only and are not necessarily to scale.

Offices at: Offices at Chorlton, Didsbury, Disley, Hale, Glossop, Macclesfield, Manchester Deansgate, Manchester Whitworth Street, New Mills, Sale, Wilmslow and Withington