






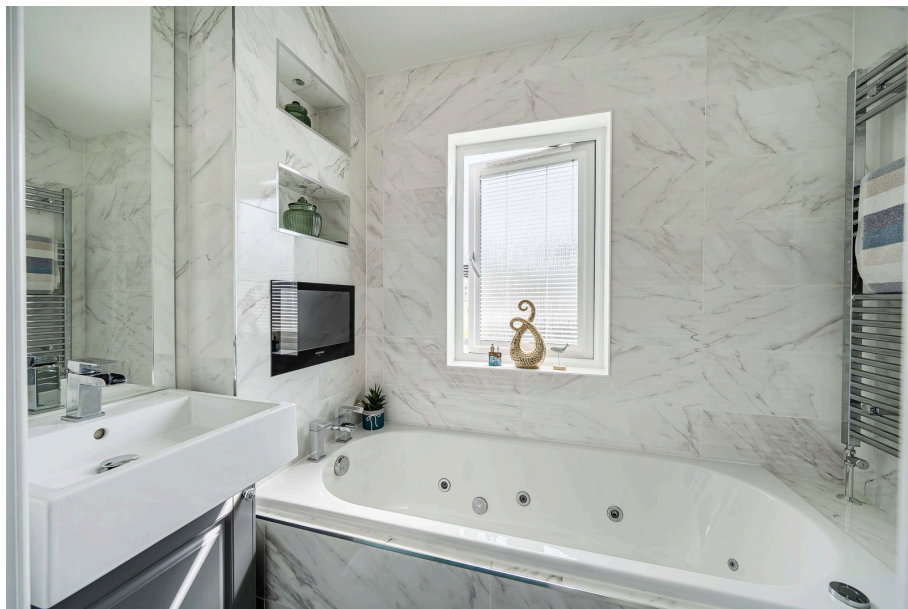
Honeysuckle Way, Meadowlands Court, Poundstock, Bude, Cornwall, EX23 0FF

£186,000

 2  2  1



- Stately Albion 45' x 16'
- Coastal Location
- Stylish fitted kitchen
- Ensuite to master
- Driveway to the side
- Immaculate throughout
- Semi-Open-plan living space
- Two double bedrooms
- Corner plot garden
- No stamp duty to pay



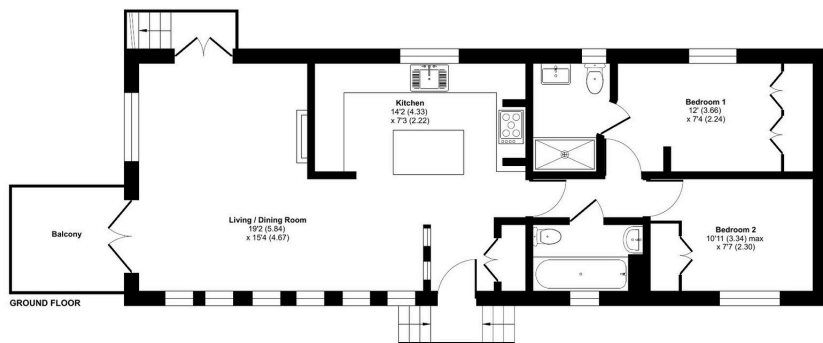
A beautifully presented two bedroom 45' x 16' Stately Albion park home, set within the desirable Meadowlands Court near Bude situated on a prominent corner plot. This stylish home offers a superb blend of elegance and modern practicality and located close to the West Cornish coastline, this is an appealing home for many.

Inside, the home is light, airy and immaculately maintained, with vaulted ceilings enhancing the sense of space. The generous open-plan lounge, kitchen and dining area provides an ideal setting for both relaxation and entertaining, with double doors opening onto decked seating areas. The well-appointed kitchen features a traditional range cooker, integrated appliances and a Belfast sink. Two bedrooms include a spacious master with ensuite, complemented by a luxurious bathroom with roll-top Jacuzzi bath. Occupying a prominent corner plot, the home also



Honeysuckle Way, Meadowlands Court, Poundstock, Bude, EX23 1Y

Approximate Area = 695 sq ft / 64.5 sq m
For identification only - Not to scale



Floor plan produced in accordance with RICS Property Measurement 2nd Edition, incorporating International Property Measurement Standards (IPMS2 Residential). © richrecom 2025. Produced for The Park Home Agency Ltd. REF: 1440052



01793 230185

sales@theparkhomeagency.co.uk

Agents Notes: All measurements are approximate and quoted in metric with imperial equivalents and for general guidance only and whilst every attempt has been made to ensure accuracy, they must not be relied on. The fixtures, fittings and appliances referred to have not been tested and therefore no guarantee can be given that they are in working order. Internal photographs are reproduced for general information and it must not be inferred that any item shown is included with the property. For a free valuation, contact the numbers listed on the brochure