



Melrose Avenue, SW16  
£400,000

**Dexters**



## Melrose Avenue, SW16

A well-presented two bedroom share of freehold maisonette with a private garden located just 0.7 miles away from Norbury Station.

This ground floor maisonette offers an open-plan kitchen living, perfect for entertaining. The rear consists of two bedrooms and a study room offering generous space and plenty of natural light. The maisonette also features an additional utility room and family bathroom.

Benefits include a designated parking space and easy access to amenities, making it an ideal location for families.

The nearest mainline station, Norbury, is only 0.7 miles away, offering regular rail services to London Bridge and London Victoria. The area is well served by highly regarded schools, with Norbury Park and Streatham Common also nearby, providing excellent recreational facilities.

### Features

- Two bedrooms
- 0.7 miles from station
- Private garden
- Share of Freehold
- Private parking space
- EPC D





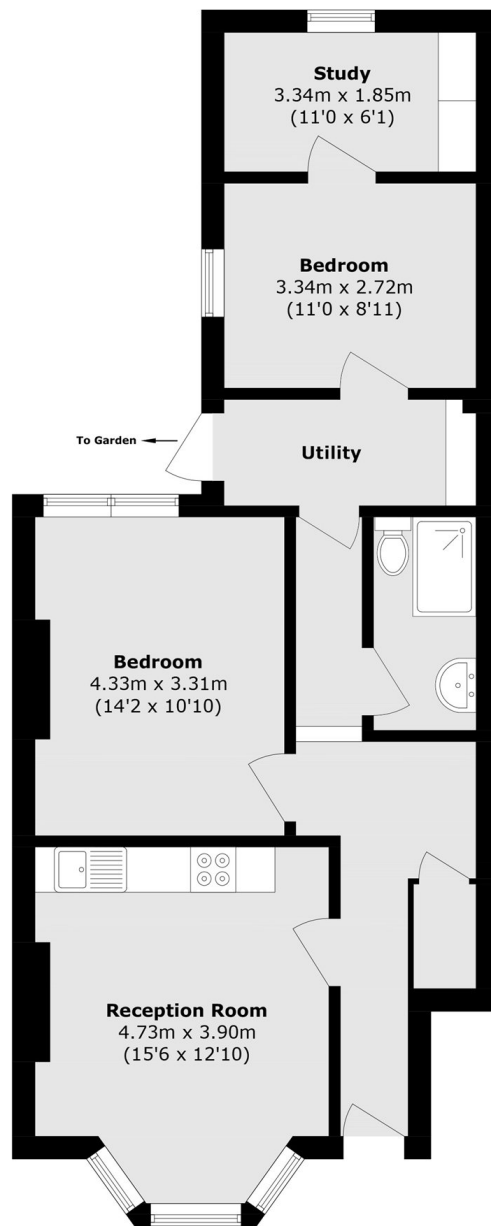








# Melrose Avenue, London, SW16



Total area (approx.): 69.5 sq. m (748.0 sq. ft)