

Streatham High Road, SW16

£395,000

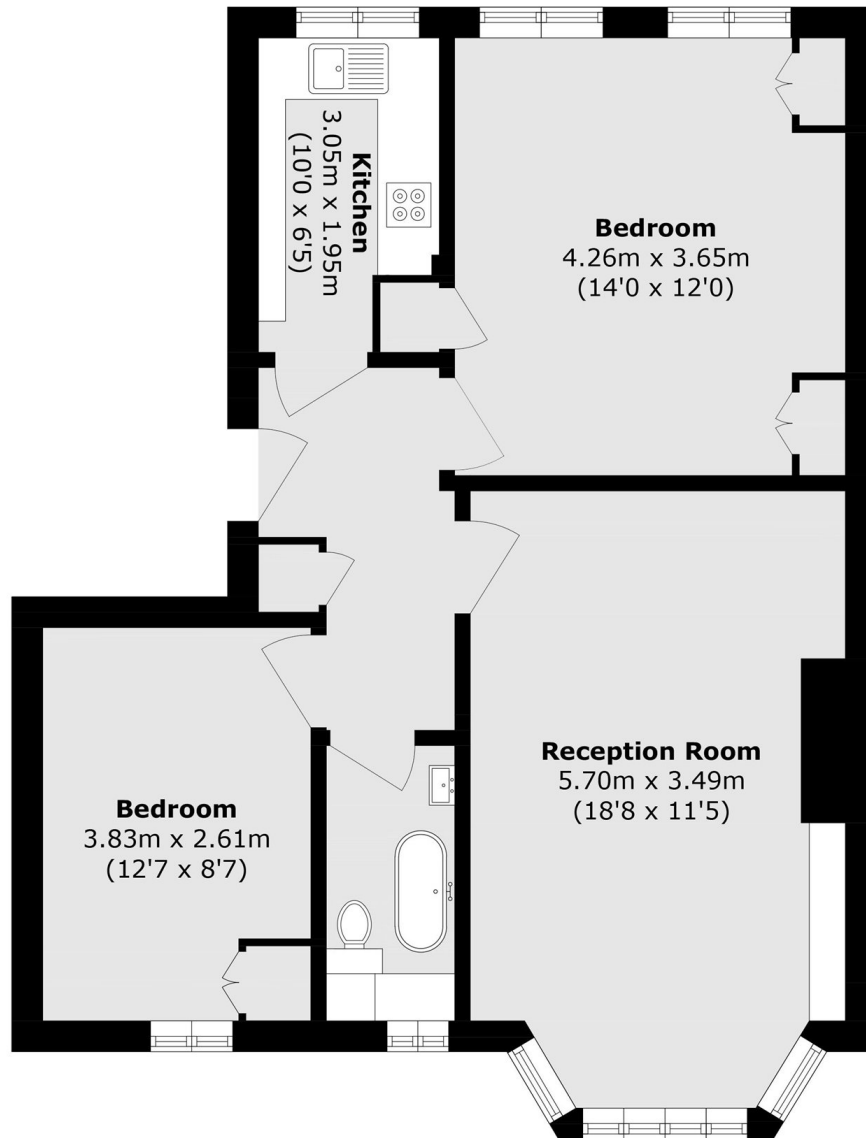
Set within a desirable mansion block in the heart of Streatham, this two double bedroom apartment offers over 695 sq ft of living space, a separate kitchen and a generous reception room.

Perfectly positioned on Streatham High Road, The High benefits from close proximity to both Streatham Hill and Streatham mainline stations, along with numerous bus routes, offering quick and easy access to Brixton.

Features

- Two Double Bedrooms
- Convenient Location
- Over 695 Sq Ft
- South After Location
- Large Living Space
- Separate Kitchen

Streatham High Road,
London, SW16



Total area (approx.): 64.6 sq. m (695.3 sq. ft)

Dexters

Streatham
105 Streatham Hill
London
SW2 4UG
Sales
020 8674 7400

Energy Rating: C. We aim to make our particulars both accurate and reliable. However they are not guaranteed; nor do they form part of an offer or contract. If you require clarification on any points then please contact us, especially if you're traveling some distance to view. Please note that appliances and heating systems have not been tested and therefore no warranties can be given as to their good working order.

RICS | Regulated
Estate Agent
and Letting Agent

dexters.co.uk