

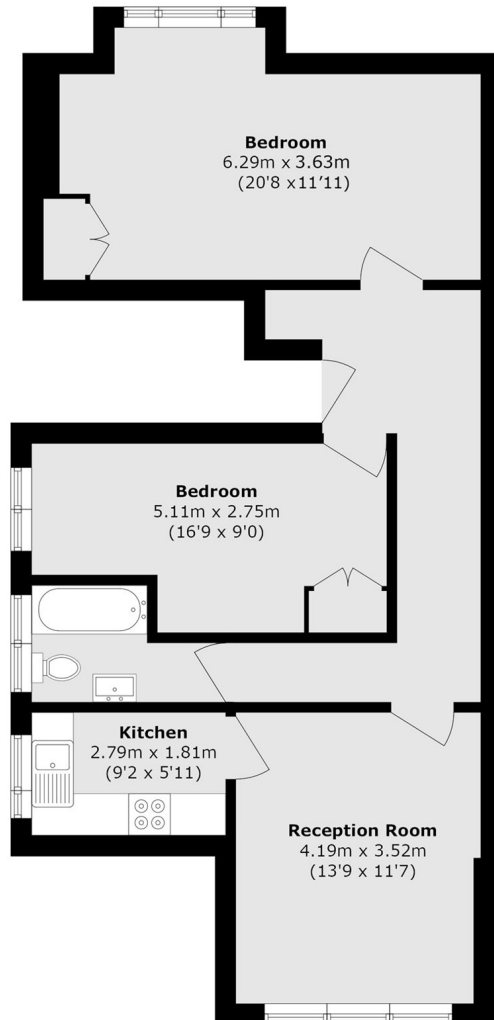


## Wolverton Gardens, W5

£508 pw (£2,200 pcm)

This top floor two bedroom period conversion flat, set within a semi-detached property, offers a great living space. It features a separate kitchen as well as high ceilings. The property combines classic period and modern comforts, making it an attractive home.

Wolverton Gardens is close to Ealing Common, North Ealing and West Acton stations, offering easy access to central London.



Total area (approx.): 71.3 sq. m (767.4 sq. ft)

Robertson Smith & Kempson Ealing Lettings  
1 The Broadway,  
London, W5 2NT  
020 8840 7885  
[ealinglettings@robertsonsmithandkempson.co.uk](mailto:ealinglettings@robertsonsmithandkempson.co.uk)

Energy Rating: D. We aim to make our particulars both accurate and reliable. However they are not guaranteed; nor do they form part of an offer or contract. If you require clarification on any points then please contact us, especially if you're traveling some distance to view. Please note that appliances and heating systems have not been tested and therefore no warranties can be given as to their good working order.