



162-164 Abbey Street

London, SE1

6,258 £ per month
(1,444.15 £ per week)

An impressive 3 bedroom, 3 bathroom upper floor lateral warehouse conversion of 2264 sq ft within this gated former Victorian Tannery with off street parking.

CHESTERTONS



162-164 Abbey Street

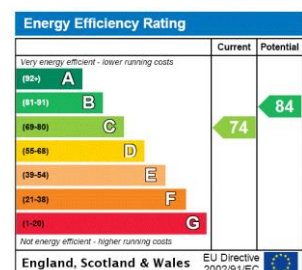
London, SE1

- THREE BEDROOMS
- THREE BATHROOMS
- WAREHOUSE CONVERSION



An impressive first floor lateral warehouse conversion of some 2264 sq ft within this gated former Victorian Tannery close to Tower Bridge and Shad Thames. The flat has high ceilings and retains many original features including exposed brick work, original windows, reclaimed flooring and has great potential to create your own flexible and personalised space. The accommodation comprises a double aspect reception room, three bedrooms and three bathrooms and comes with an off road parking.

Minimum Term: 12 months
Deposit Required: 8,664.92 £
Local Authority: London Borough of Southwark
Council Tax Band: D
EPC Rating: C
Furnished, Unfurnished

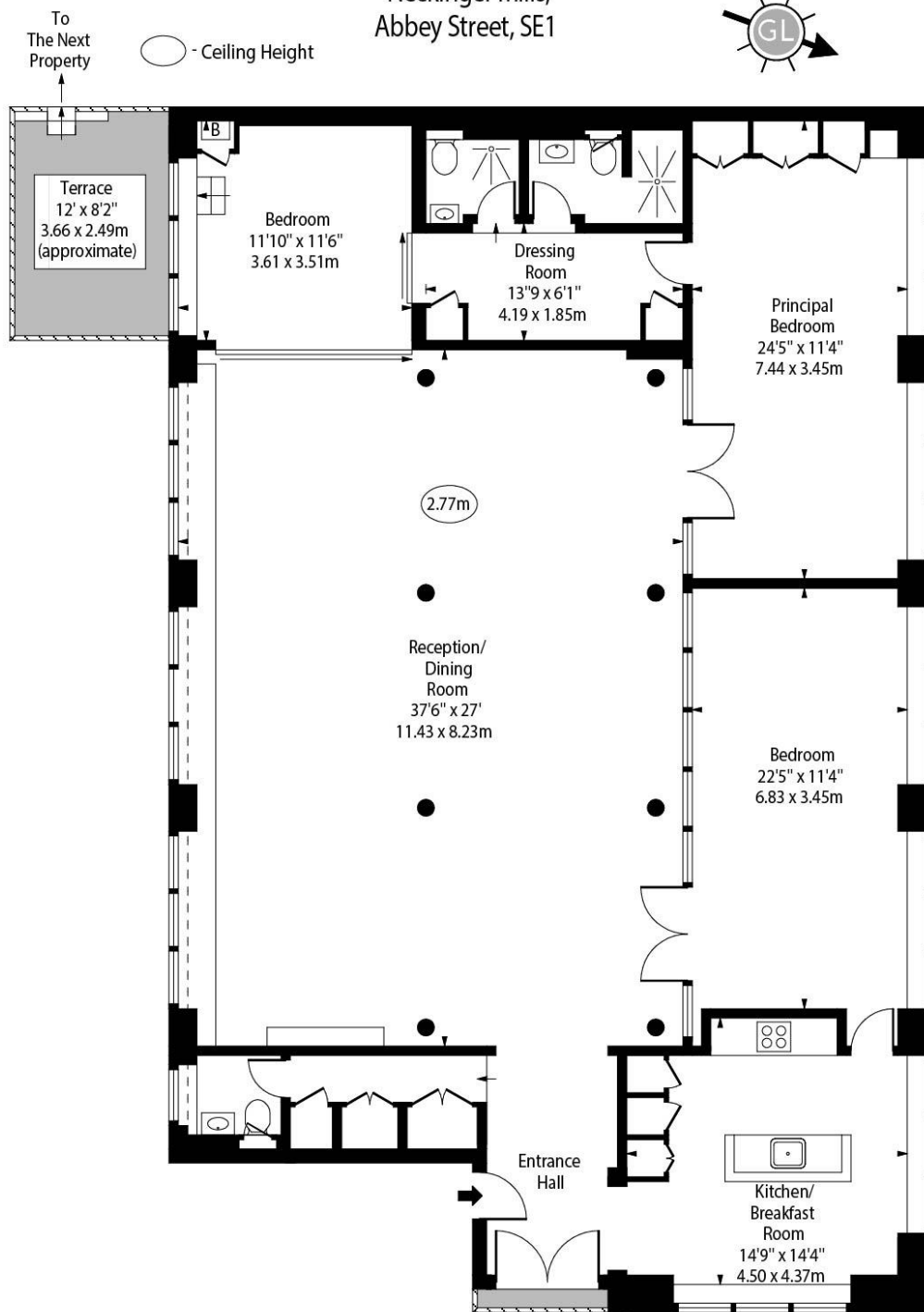


Chestertons Tower Bridge Lettings

220 Tower Bridge Road
 Tower Bridge
 London
 SE1 2UP
towerbridgelettingsusers@chestertons.co.uk
 02073576911
chestertons.co.uk

Additional tenant charges apply (fees apply to non-AST tenancies only)
 Tenancy Agreement Fee: £300
 References per Tenant/Guarantor: £60
 Inventory check (approx. £100 – £250 inc. VAT)
chestertons.co.uk/property-to-rent/applicable-fees

Neckinger Mills,
Abbey Street, SE1



First Floor

Approx Gross Internal Area 2264 Sq Ft - 210.33 Sq M

For Illustration Purposes Only - Not To Scale
www.goldlens.co.uk
Ref. No. 017380M

