

# HIGHLEVER ROAD







## Highlever Road, W10

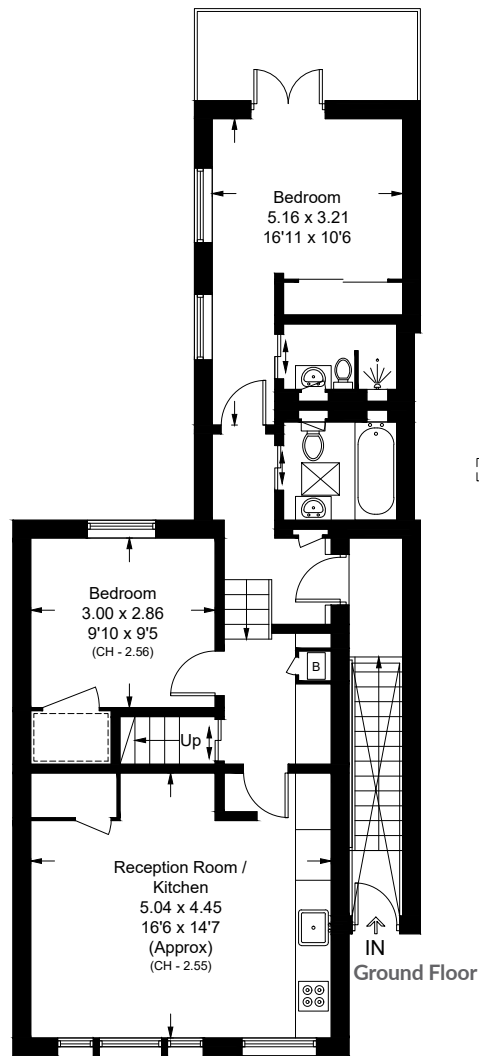
A superb three-bedroom duplex apartment located on the first and second floors of a Victorian conversion on this popular treelined street in North Kensington. This beautifully refurbished property has a bright open-plan reception room, two well-appointed bathrooms, and a ground floor private entrance. The apartment benefits from a balcony, providing some outdoor space to relax and enjoy the west-facing sunset views. Offered as a share of freehold, this exceptional home combines contemporary living with a desirable location. Highlever Road gives easy access to Latimer Road Underground station for the Hammersmith, City and Circle line along with all the highlights that Golborne and Portobello Road has to offer.







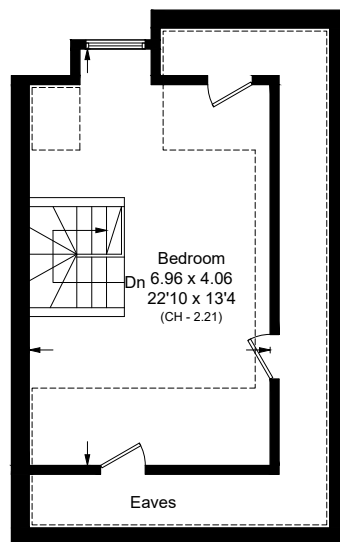




First Floor

Approx. Gross Internal Area = 113.7 sq m / 1,224 sq ft  
Including Limited Use Area = 24.9 sq m / 268 sq ft and Eaves

= Reduced head height below 1.5m



Second Floor



## Highlever Road, W10 - Freehold

Local Authority - **Royal Borough of Kensington & Chelsea**

- Three bedrooms
- Two bathrooms
- Open plan reception room
- Balcony
- Private entrance
- Duplex apartment



Whilst every attempt has been made to ensure the accuracy of the floor plan, measurements are approximate and not to scale. No guarantee is given on the total square footage of the property quoted on the plan. Figures given are for guidance. Plan is for illustration purposes only, not to be used for valuations.