



Your Logo

196 C Blythe Road,
£3,800PCM (Deposit: £4,384)

 3  2  1



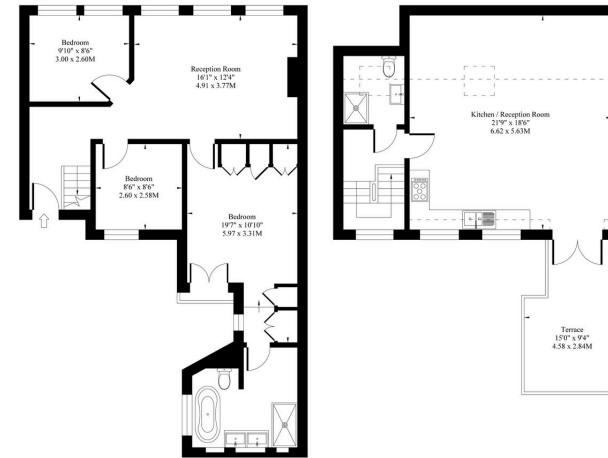
Tax Band: D Furnished: Not Specified

A rare opportunity to rent a bright and stylish three-bedroom duplex apartment with a generous private roof terrace, perfectly located in the heart of Brook Green. Unfurnished, the apartment features exposed brickwork, wooden floors, and a spacious open-plan reception with fully fitted kitchen opening onto the terrace, ideal for entertaining or relaxing in privacy and light. The principal bedroom offers abundant built-in storage, complemented by two further bedrooms and two modern bathrooms. Perfect for families or professionals, with excellent access to Brook Green's shops, cafés, gastro pubs, Kensington High Street, Westfield London, and the open green spaces of Holland Park.





196C Blythe Road W14 0HH



Ground Floor

First Floor

Approx. Gross Internal Area 1267 Sq. Ft / 117.69 Sq. M

Measured in according with RICS guidelines. Every attempt is made to ensure accuracy. However all measurements are approximate. The floor plan is illustrative purposes only and is not to scale.



Energy performance certificate (EPC)

Flat C 196 Blythe Road London W14 0HH	Energy rating D	Valid until 6 March 2034 Certificate number: 2098-3807-4048-4402-8305
--	---------------------------	--

Property type Top floor flat
 Total floor area 117 square metres

Rules on letting this property

Properties can be let if they have an energy rating from A to E.

You can read [guidance for landlords on the regulations and exemptions](https://www.gov.uk/guidance/domestic-private-rented-property-minimum-energy-efficiency-standards-policies) (https://www.gov.uk/guidance/domestic-private-rented-property-minimum-energy-efficiency-standards-policies).

Energy rating and score

This property's energy rating is D. It has the potential to be C.

[See how to improve this property's energy efficiency.](#)

The graph shows this property's current and potential energy rating.

Properties get a rating from A (best) to G (worst) and a score. The better the rating and score, the lower your energy bills are likely to be.

For properties in England and Wales:
 the average energy rating is D
 the average energy score is 60

