

HUNTERS®

HERE TO GET *you* THERE



Heath Lane

Oldswinford, Stourbridge, DY8 1RQ



Heath Lane

Oldswinford, Stourbridge, DY8 1RQ

£190,000



Front of The Property

To the front of the property there is a dwarf wall and double glazed door leading to entrance hall.

Entrance Hall

With a double glazed door leading from the front of the property, doors to various rooms, under stairs storage cupboard and a central heating radiator.

Lounge

8'6" x 12'10" (2.6 x 3.9)

With a door leading from entrance hall, original feature fire place, window seat, dado rail, double glazed bay window to front and a central heating radiator.

Dining Room

12'2" x 12'6" (3.7 x 3.8)

With doors leading from entrance hall and rear hall, door with stairs leading to first floor landing, feature fire place with electric fire and decorative surround, double glazed window to rear and a central heating radiator.

Rear Hall

With a door leading from dining room, double glazed door and window to side, open to kitchen and a central heating radiator.

Kitchen

8'0" x 9'6" (2.43 x 2.89)

Open from rear hall, fitted with a range of modern wall and base units, work surfaces with tiled splash back, one and a half sink and drainer, integrated oven, gas hob with stainless steel cooker hood, integrated fridge and freezer, dishwasher, plumbing for washing machine, double glazed window to side, recessed spotlights, door to bathroom and a central heating radiator.

Bathroom

With a door leading from kitchen, modern P-shaped bath with shower over, fitted glass shower screen, WC, wash hand basin set into vanity unit, part tiled walls, extractor fan, wall mounted boiler, double glazed window to rear and a central heating radiator.

Landing

With stairs leading from dining room, doors to various rooms and loft access.

Bedroom One

10'10" x 12'6" (3.3 x 3.8)

With a door leading from landing, original feature fire place, double glazed window to front and a central heating radiator.

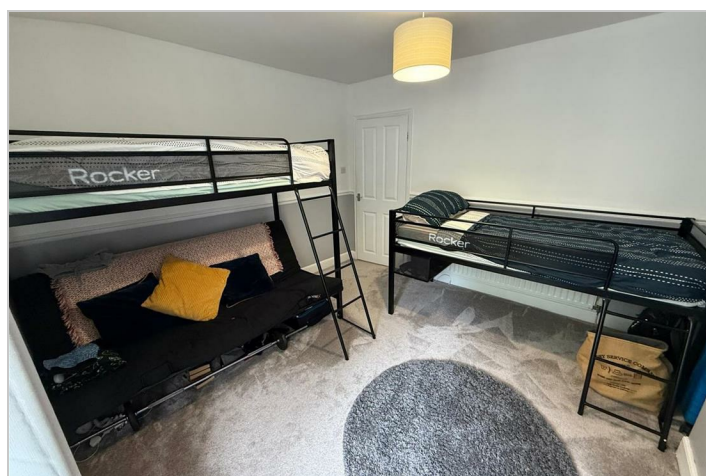
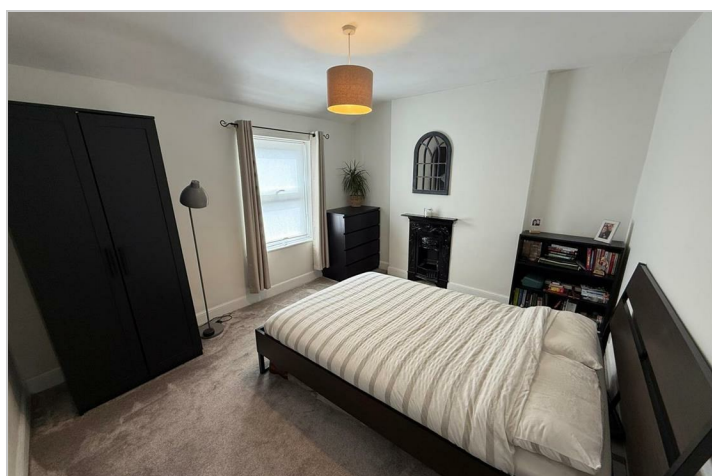
Bedroom Two

11'2" x 12'6" (3.4 x 3.8)

With a door leading from landing, double glazed window to rear and a central heating radiator.

Garden

With a double glazed door leading from rear hall to a patio seating area and decorative chipping stones.



Road Map



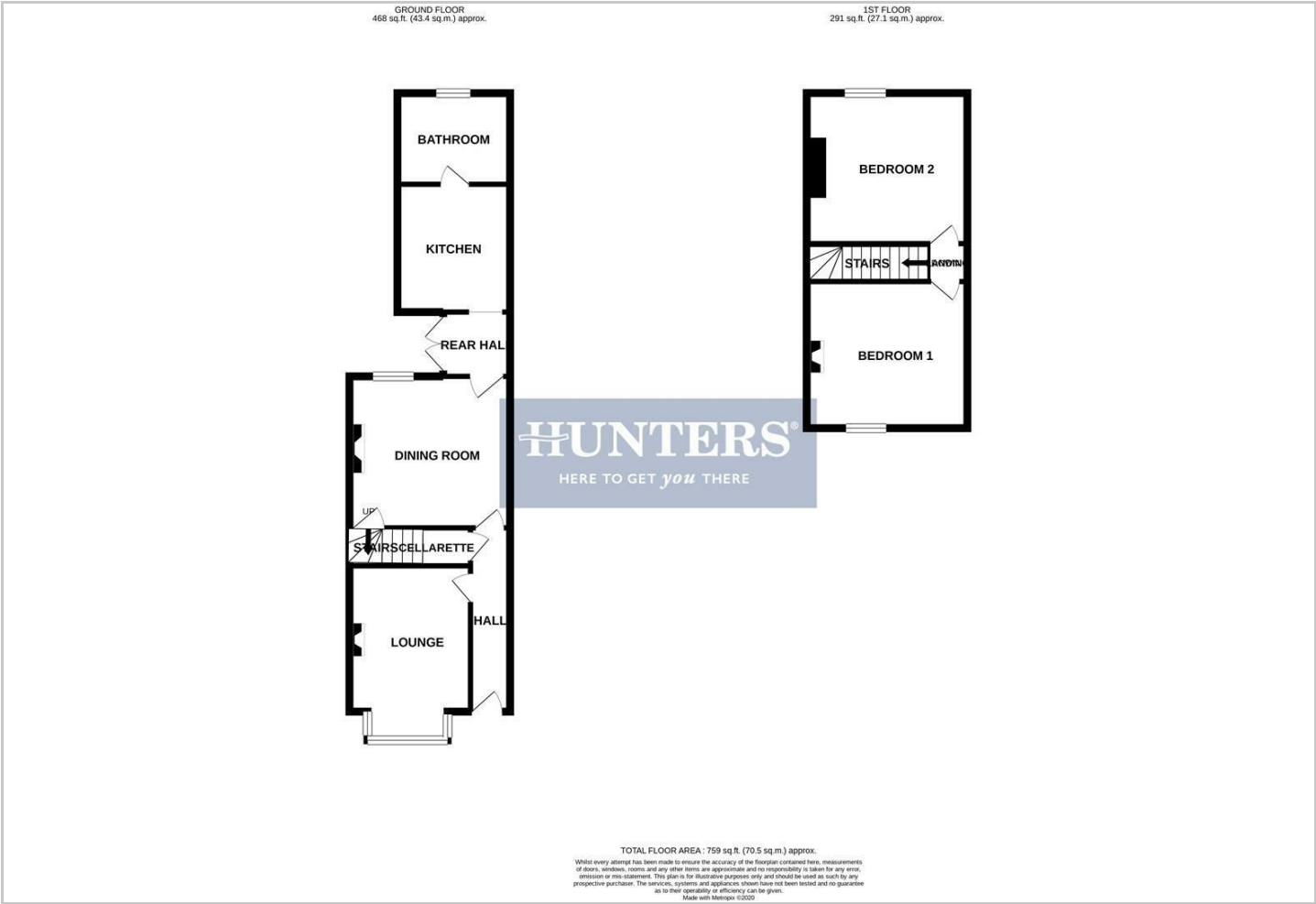
Hybrid Map



Terrain Map



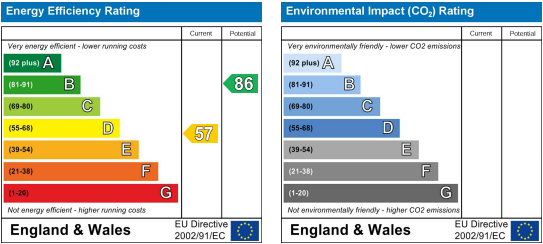
Floor Plan



Viewing

Please contact our Hunters Stourbridge Office on 01384 443331 if you wish to arrange a viewing appointment for this property or require further information.

Energy Efficiency Graph



These particulars are intended to give a fair and reliable description of the property but no responsibility for any inaccuracy or error can be accepted and do not constitute an offer or contract. We have not tested any services or appliances (including central heating if fitted) referred to in these particulars and the purchasers are advised to satisfy themselves as to the working order and condition. If a property is unoccupied at any time there may be reconnection charges for any switched off/disconnected or drained services or appliances - All measurements are approximate. **THINKING OF SELLING?** If you are thinking of selling your home or just curious to discover the value of your property, Hunters would be pleased to provide free, no obligation sales and marketing advice. Even if your home is outside the area covered by our local offices we can arrange a Market Appraisal through our national network of Hunters estate agents.