



Saffron Gardens, Wethersfield, Braintree, CM7 4BL

welcome to

Saffron Gardens, Wethersfield, Braintree

**** GUIDE PRICE £375,000 - £400,000 **** William H Brown are delighted to present this generously sized and beautifully maintained three bedroom semi-detached family home located in the charming village of Wethersfield, surrounded by stunning countryside.



Entrance Hallway

13' 11" x 7' 1" (4.24m x 2.16m)

Double glazed window to rear aspect. Stairs to first floor. Understairs storage cupboard. Radiator. Door leading to:-

Lounge

13' 5" x 24' 11" (4.09m x 7.59m)

Double glazed bay window to front aspect. Double glazed window to front aspect. Radiator. Door leading to:-

Study

11' 1" x 7' 2" (3.38m x 2.18m)

Double glazed window to rear aspect. Radiator.

Inner Lobby

Partly glazed door to side aspect leading to garden. Opening to:

Kitchen

18' 8" x 6' 2" (5.69m x 1.88m)

Two double glazed window to side aspect. Range of matching units with work surface over incorporating a stainless steel sink drainer with hot and cold mixer tap. Integrated oven. Five ring calor gas hob. Radiator. Opening to:-

Utility Room

6' 2" x 5' 10" (1.88m x 1.78m)

Double glazed window to rear aspect. Range of matching units with work surface over. Plumbing and space for washing machine, dishwasher, fridge / freezer and tumble dryer. Radiator.

Landing

Doors leading to:-

Bedroom One

13' 1" x 10' 9" (3.99m x 3.28m)

Double glazed window to front aspect. Range of fitted wardrobes. Built in storage cupboard. Radiator.

Bedroom Two

11' 1" x 10' 9" (3.38m x 3.28m)

Double glazed window to front aspect. Built in wardrobe. Airing cupboard.

Bedroom Three

10' 3" x 7' 2" (3.12m x 2.18m)

Double glazed window to rear aspect. Built in wardrobe. Radiator.

Bathroom

7' 2" x 5' 10" (2.18m x 1.78m)

Obscure double glazed window to rear aspect. Side panel bath with wall mounted shower attachment. Hand wash basin with vanity unit. Low level WC. Radiator.

Garden

Commences with paved patio seating area an remainder laid to lawn. Mature tree and shrub borders. Enclosed by panel fencing. Shed.

Parking

Off street parking for multiple cars.



view this property online williamhbrown.co.uk/Property/BTR109933



welcome to

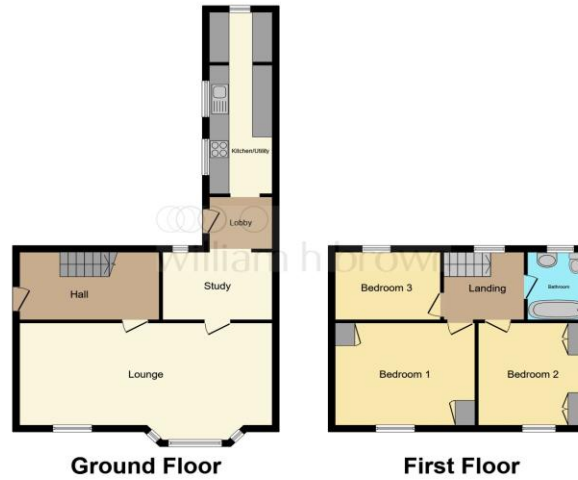
Saffron Gardens, Wethersfield Braintree

- Three Bedroom Semi-Detached House
- Two Reception Rooms
- Utility Room
- Sought After Location
- Double Glazing

Tenure: Freehold EPC Rating: D
Council Tax Band: D

guide price

£375,000 - £400,000



Please note the marker reflects the
postcode not the actual property

view this property online [williamhbrown.co.uk/Property/BTR109933](https://www.williamhbrown.co.uk/Property/BTR109933)



Property Ref:
BTR109933 - 0003

1. MONEY LAUNDERING REGULATIONS Intending purchasers will be asked to produce identification documentation at a later stage and we would ask for your co-operation in order that there is no delay in agreeing the sale. 2. These particulars do not constitute part or all of an offer or contract. 3. The measurements indicated are supplied for guidance only and as such must be considered incorrect. Potential buyers are advised to recheck measurements before committing to any expense. 4. We have not tested any apparatus, equipment, fixtures or services and it is in the buyers interest to check the working condition of any appliances. 5. Where an EPC, or a Home Report (Scotland only) is held for this property, it is available for inspection at the branch by appointment. If you require a printed version of a Home Report, you will need to pay a reasonable production charge reflecting printing and other costs. 6. We are not able to offer an opinion either written or verbal on the content of these reports and this must be obtained from your legal representative. 7. Whilst we take care in preparing these reports, a buyer should ensure that his/her legal representative confirms as soon as possible all matters relating to title including the extent and boundaries of the property and other important matters before exchange of contracts.

William H Brown is a trading name of Sequence (UK) Limited which is registered in England and Wales under company number 4268443, Registered Office is Cumbria House, 16-20 Hockliffe Street, Leighton Buzzard, Bedfordshire, LU7 1GN. VAT Registration Number is 500 2481 05.



william h brown



01376 320018



braintree@williamhbrown.co.uk



51-53 High Street, BRAINTREE, Essex, CM7 1JX



[williamhbrown.co.uk](https://www.williamhbrown.co.uk)