



Guide Price
£325,000

Freehold

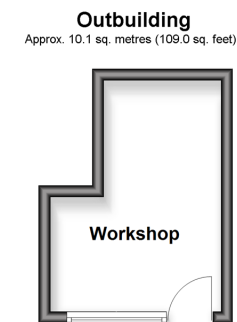
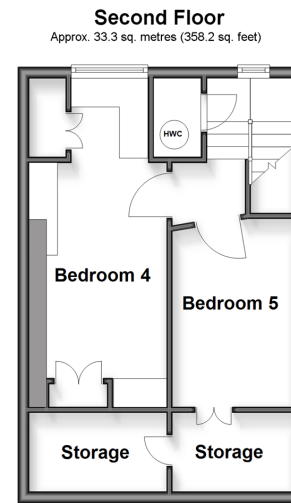
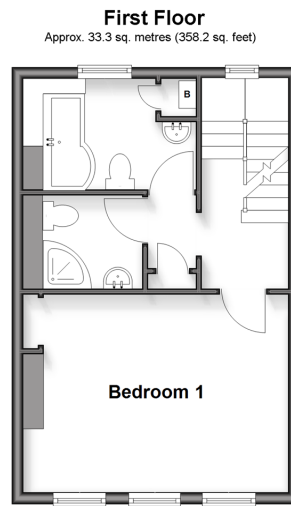
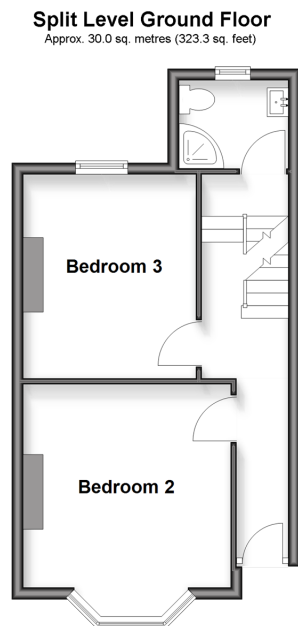
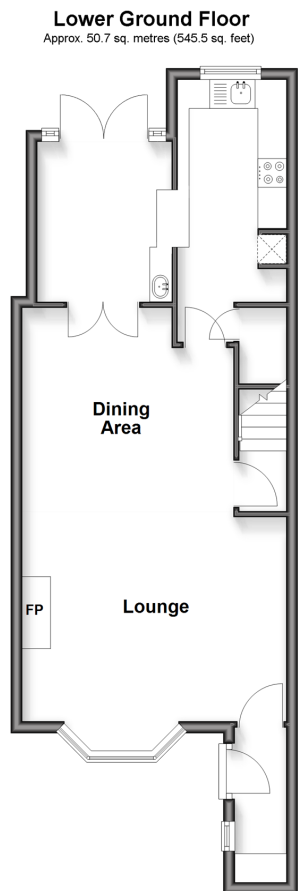
5x  3x  2x 

**Heathfield Avenue,
Dover, Kent, CT16**

OVER 60?

Secure this property
for up to **59% less!**

Wards
Helping you move forwards



Accommodation

SPLIT LEVEL GROUND FLOOR

Entrance Hallway
Bedroom 2: 13'4 x 11'9 (4.07m x 3.58m)
Bedroom 3: 11'11 x 9'9 (3.63m x 2.97m)
Shower Room

LOWER GROUND FLOOR

Entrance Lobby
Lounge : 15'2 x 13'6 (4.63m x 4.12m)
Dining Area: 12'4 x 11'8 (3.76m x 3.56m)
Conservatory: 9'2 x 7'2 (2.80m x 2.19m)
Kitchen: 15'8 x 5'11 (4.78m x 1.80m)

FIRST FLOOR

Landing
Bedroom 1: 14'2 x 11'9 (4.32m x 3.58m)
Shower Room
Bathroom

SECOND FLOOR

Landing
Bedroom 4: 18'4 x 6'11 (5.59m x 2.11m)
Bedroom 5: 10'6 x 6'11 (3.20m x 2.11m)

OUTBUILDING

Workshop

OUTSIDE

Gardens to front and rear



Main features

- Stunning family home set in central location
- Ideal home for a growing family or potential long term investment
- Beautifully presented throughout
- No onward chain complications
- Good size enclosed rear garden, perfect for children or pets



Nearest Schools

Primary Schools: Barton Junior School 0.1 miles, Charlton C of E Primary 0.2 miles, St Richard's Catholic Primary 0.5 miles
Secondary Schools: Dover Grammar School for Girls 0.3 miles, St Edmund's Catholic School 0.4 miles.



Transport Information

Train Stations: Dover Priory 1.3 miles, Kearsney 1.8 miles, Martin Mill 4.2 miles



Address

Heathfield Avenue, Dover, Kent, CT16



Directions

For directions to this property please contact us.



Wards
Helping you move forwards

Call Dover Branch 01304 214876 ■ wardsofkent.co.uk



- Legal advice should be taken to verify fixtures/fittings, planning, alterations and/or lease details
- Appliances & services are untested, dimensions are approximate and floor plans are not to scale
- Through a Homewise Home For Life Plan people aged 60+ can secure this property for up to 50% less, by purchasing a Lifetime Lease.



10736195/20251004/MB/GM