

## Thornthwaite

**Offers over £600,000**

Vermont, Thornthwaite, Keswick, CA12 5SA

A detached four bedroom house enjoying a pleasant elevated position in Thornthwaite village with delightful fell views and equally suitable as a primary home, recreational second home or for lucrative holiday rentals.

The accommodation provides versatile options allowing the owners to reside on the ground floor should they wish as there is a ground floor bedroom and bathroom.

Thornthwaite village is conveniently located four miles west of Keswick and close to the wide range of local amenities provided in neighbouring Braithwaite including regular bus routes, Church of England primary school, shop and a visiting post office, church, village hall with sporting facilities, café, hotels, restaurants and public houses..

### Quick Overview

Detached house with versatile accommodation

Pleasant setting in Thornthwaite village

Four miles from Keswick

Delightful fell views

Four bedrooms

Open plan living room / kitchen

Two bath / shower rooms

Garden

On-site parking and garage

Equally suitable as a primary home, recreational second home or for lucrative holiday rentals.



4



2



1



TBC



Superfast  
Broadband  
Available



3

Property Reference: KW0513



Living Room / Dining Kitchen



Living Room / Dining Kitchen



Living Room / Dining Kitchen



Living Room / Dining Kitchen

## Accommodation

### Ground Floor:

#### Entrance Hall

With radiator.

#### Open Plan Living Room / Dining Kitchen

With windows to two elevations, two radiators, fitted base and wall units, sink with mixer tap, plumbing for dishwasher, integrated oven, hob, extractor unit, fridge and freezer.

#### Bedroom One

With radiator.

#### Bedroom Two

With radiator, range of fitted bedroom furniture.

#### Bathroom

With WC, wash hand basin, bath with shower over, heated towel rail.

### First Floor:

#### Landing

With roof windows.

#### Bedroom Three

With radiator.

#### Bedroom Four

With radiator.

#### En-suite Shower Room

With WC, wash hand basin, shower, roof window.

### Outside:

Driveway and forecourt providing on-site parking, front garden with paved patio, stocked and shrubbed borders, external store, utility room with plumbing for washing machine and electric light and power, garage with electric light and power.



Living Room / Dining Kitchen



Living Room / Dining Kitchen



Bedroom One



Bedroom Two



Bedroom Three



Bedroom Four

### Services

Mains water, electricity, gas and drainage. Gas central heating.

### Tenure

Freehold.

### Council Tax

Band F.

### Planning Consent

Planning consent is approved under reference 7/2025/2176 for the provision of a single storey side extension, new decked area to the front and patio doors, and replacement of dormer window with balcony type rooflights.

### Directions

From Keswick proceed west on the A66 towards Cockermouth and turn left where signposted to Thornthwaite. Proceed into the village and turn left where signposted to the Galleries. Follow the road and bear left after passing the Galleries. Vermont is the second property on the right.

### What3words

///snappy.barefoot.strongman

### Viewings

By appointment with Hackney & Leigh's Keswick office.

### Price

Offers over £600,000 are invited for consideration.

### Anti-Money Laundering Regulations (AML)

Please note that when an offer is accepted on a property, we must follow government legislation and carry out identification checks on all buyers under the Anti-Money Laundering Regulations (AML). We use a specialist third-party company to carry out these checks at a charge of £42.67 (incl. VAT) per individual or £36.19 (incl. VAT) per individual, if more than one person is involved in the purchase (provided all individuals pay in one transaction). The charge is non-refundable, and you will be unable to proceed with the purchase of the property until these checks have been completed. In the event the property is being purchased in the name of a company, the charge will be £120 (incl. VAT).



Bedroom Four



Outside Seating Area



Driveway



Setting

Request a Viewing Online or Call 01768 741741

## Meet the Team

### Nick Elgey

Sales Manager & Property Valuer

Tel: 017687 41741  
Mobile: 07368 416931  
nre@hackney-leigh.co.uk



### Simon Bennett

Sales Team

Tel: 017687 41741  
keswicksales@hackney-leigh.co.uk



### Dawn Branson

Sales Team

Tel: 017687 41741  
keswicksales@hackney-leigh.co.uk



### Sue Jackson

Viewing Assistant

Tel: 017687 41741  
keswicksales@hackney-leigh.co.uk



### Angela Bell

Viewing Assistant

Tel: 017687 41741  
keswicksales@hackney-leigh.co.uk



### Chris Houghton

Viewing Assistant

Tel: 017687 41741  
keswicksales@hackney-leigh.co.uk



Viewings available 7 days a week including evenings with our dedicated viewing team  
Call **01768 741741** or request online.



Need help with **conveyancing**? Call us on: **01539 792032**

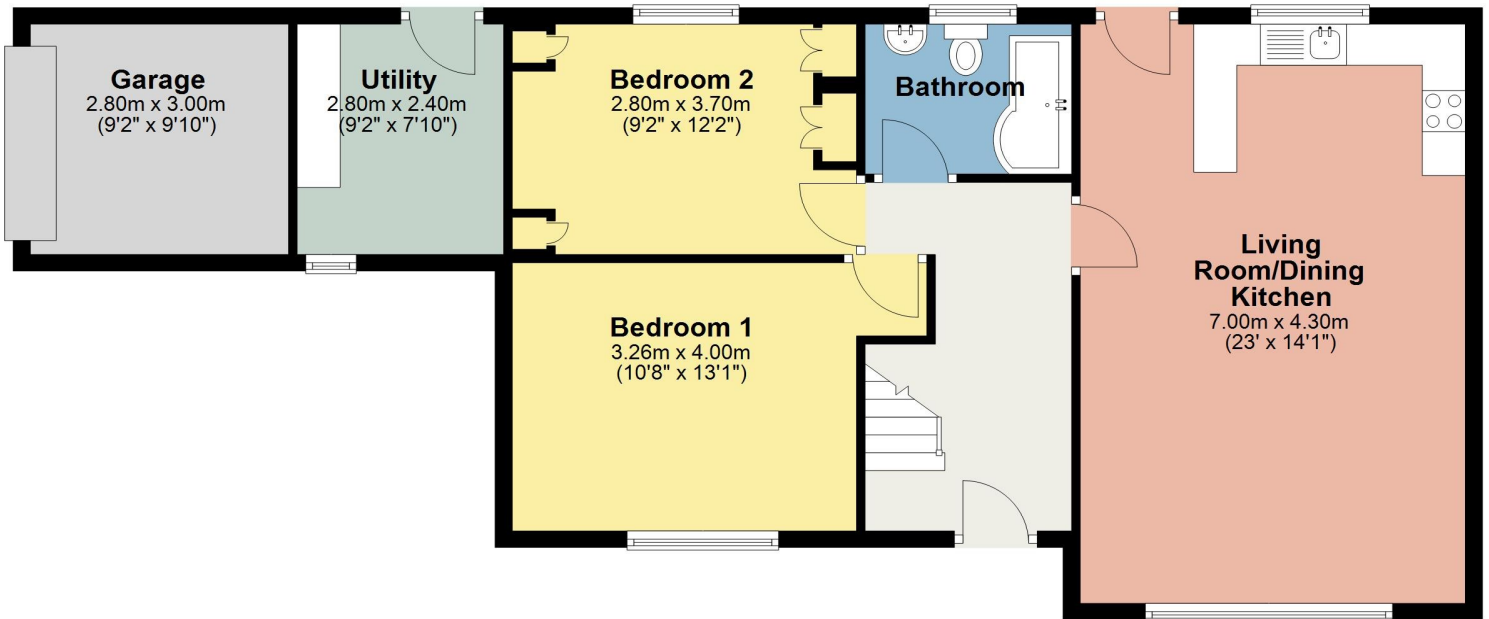


Can we save you money on your **mortgage**? Call us on: **01539 792033**

Hackney & Leigh Ltd 11 Bank Street, Keswick, Cumbria, CA12 5JY | Email: [keswicksales@hackney-leigh.co.uk](mailto:keswicksales@hackney-leigh.co.uk)

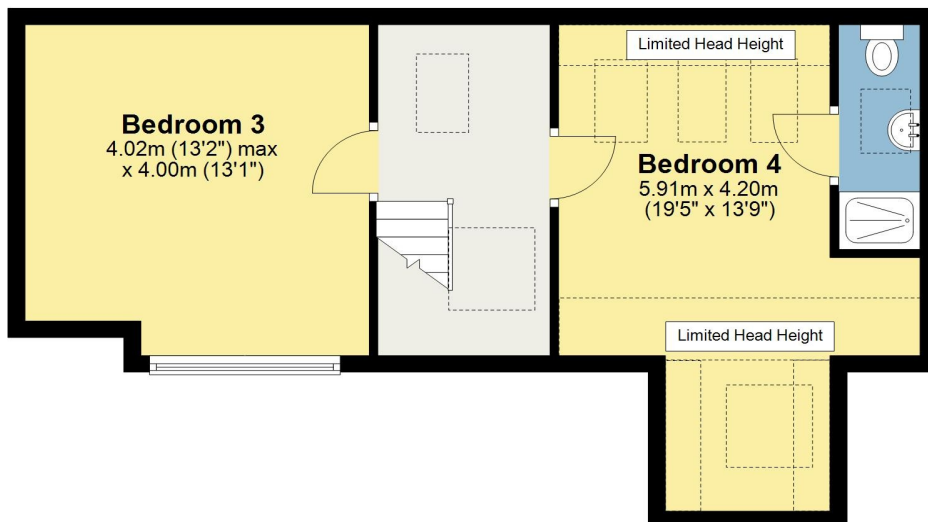
## Ground Floor

Approx. 81.8 sq. metres (880.7 sq. feet)



## First Floor

Approx. 44.8 sq. metres (482.4 sq. feet)



Total area: approx. 126.6 sq. metres (1363.0 sq. feet)

This plan is for layout guidance only and is not drawn to scale unless stated. Windows and door openings are approximate. Whilst every care is taken in preparation of this plan, please check all dimensions, shapes and compass bearings before making any decision reliant upon them. REF:  
Plan produced using PlanUp.

## Vermont. Thornthwaite

All permits to view and particulars are issued on the understanding that negotiations are conducted through the agency of Messrs. Hackney & Leigh Ltd. Properties for sale by private treaty are offered subject to contract. No responsibility can be accepted for any loss or expense incurred in viewing or in the event of a property being sold, let, or withdrawn. Please contact us to confirm availability prior to travel. These particulars have been prepared for the guidance of intending buyers. No guarantee of their accuracy is given, nor do they form part of a contract. \*Broadband speeds estimated and checked by <https://checker.ofcom.org.uk/en-gb/broadband-coverage> on 27/03/2026.

Request a Viewing Online or Call 01768 741741