



OFFERS OVER

**£240,000**

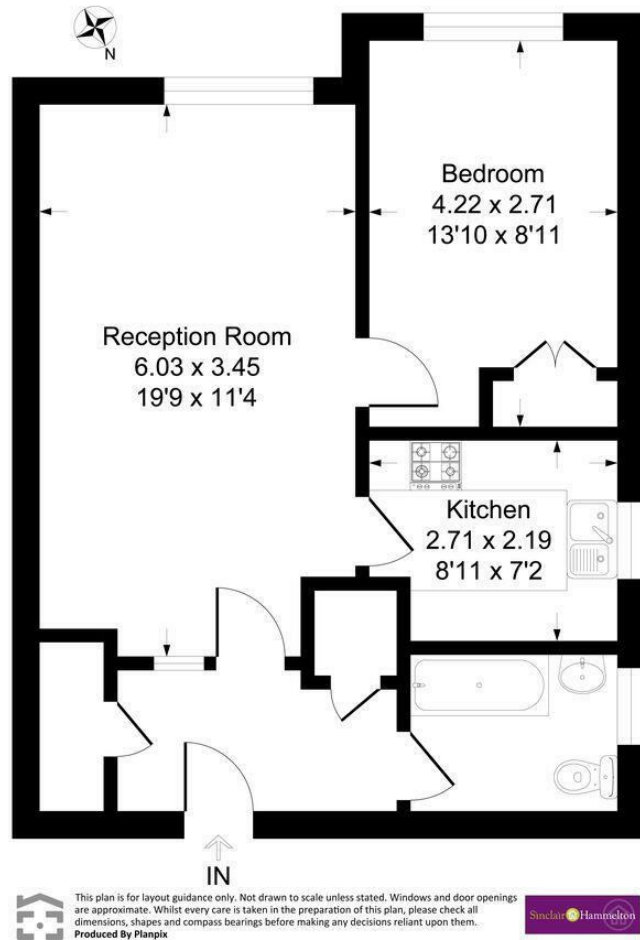
**London Lane**

Bromley, BR1 4HX

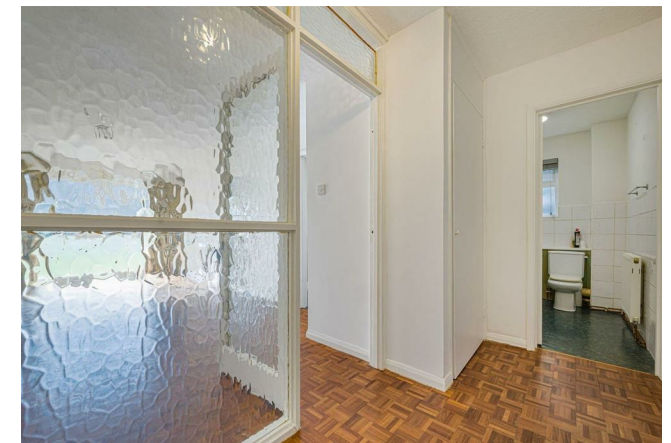
EPC RATING: C COUNCIL TAX BAND: C

## Russell Court, London Lane, BR1

Approximate Gross Internal Area 50.6 sq m / 545 sq ft



Energy Efficiency Rating		Current	Potential
Very energy efficient - lower running costs			
(92 plus) <b>A</b>			
(81-91) <b>B</b>			
(69-80) <b>C</b>		70	74
(55-68) <b>D</b>			
(39-54) <b>E</b>			
(21-38) <b>F</b>			
(1-20) <b>G</b>			
Not energy efficient - higher running costs			
<b>England &amp; Wales</b>		EU Directive 2002/91/EC	



Agents Note: Whilst every care has been taken to prepare these particulars, they are for guidance purposes only. All measurements are approximate and are for general guidance purposes only and whilst every care has been taken to ensure their accuracy, they should not be relied upon and potential buyers/tenants are advised to recheck the measurements



### OFFICE ADDRESS

23 High Street  
Bromley  
Kent  
BR1 1LG

### OFFICE DETAILS

0208 464 5566  
info@sinclairhammelton.co.uk