



Morgans

PROPERTY

17 Ladysmill Court, Dunfermline, KY12 7YD

Offers Over £190,000





Two-bedroom mid-terrace home



Kitchen/dining room and lounge



First floor bathroom



EPC Rating - C



Two double bedrooms



Built-in storage throughout



Quiet court position



Council Tax Band - D



Welcome

This two-bedroom mid-terrace home offers well-proportioned accommodation over two floors, extending to approximately 822 sq ft and suitable for a first-time buyer, couple/small families or investor. The ground floor provides a lounge and a kitchen/dining room extending to over 15 feet, along with a storage cupboard off the hall. The first floor comprises two double bedrooms and a bathroom. Both bedrooms are of a good size and benefit from built-in wardrobe and cupboard storage, with a further cupboard on the landing. Situated in a quiet cul de sac in Dunfermline, the property has private parking to the front and fully enclosed back garden with private outlook. It is within easy reach of local amenities, schools, and transport links.





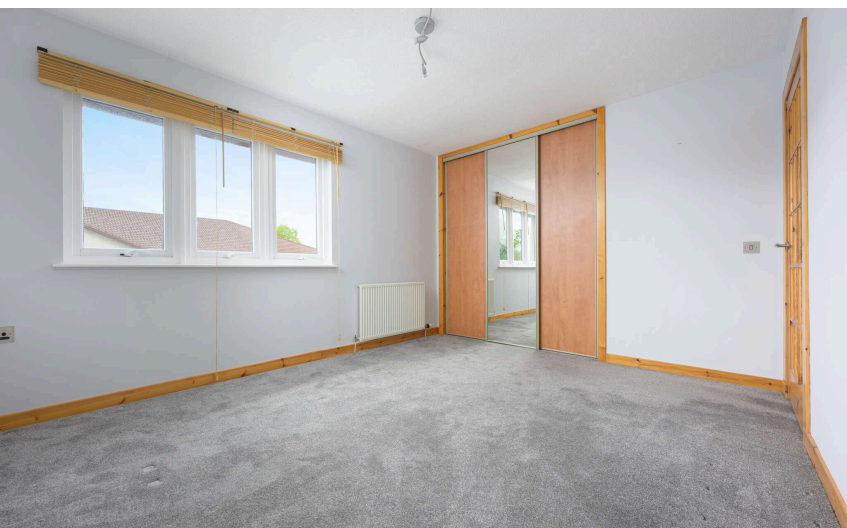
EXTRAS INC. IN SALE/AGENTS NOTE

All floorcoverings, blinds, bathroom and light fittings together with integrated appliances.

From 1st February 2022, residential properties in Scotland are required by law to have installed a system of inter-linked smoke alarms, carbon monoxide detectors and heat detectors (the "inter-linked system"). No warranty is given that any interlinked system has been installed in this property and interested parties should make their own enquiries









Dunfermline

The ancient capital of Dunfermline won its bid to have official status city in May 2022, as part of the civic honour's competition to celebrate the Queen's platinum jubilee. The City of Dunfermline is of considerable historic interest and is the resting place of King Robert the Bruce. Carnegie's Birthplace museum, the Abbey and Abbot House reflect the historic interest of the city, whilst recent developments have seen Dunfermline move into the modern era with Carnegie Museum and Library. Dunfermline is located approximately five miles from the Forth bridges and is therefore particularly popular with commuters to Edinburgh and many parts of the central belt with easy access to the M90 motorway with its direct links to Edinburgh, Perth and Dundee and across the Kincardine Bridge by way of motorways to Stirling, Glasgow and the West. It benefits from a full range of shops, social and leisure facilities and educational establishments. The local railway stations provide a regular service to Edinburgh with intercity links to other parts of the UK. There are regular and convenient bus services both local and national.

Morgans Property Package

We provide the complete buying and selling package including a comprehensive estate agency service and full legal service. For a FREE PRE-SALE VALUATION, estimate and market appraisal without cost or obligation, contact us.

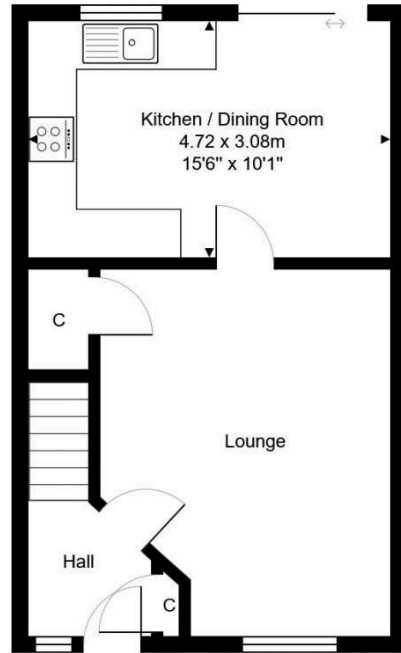


17 Ladysmill Court, Dunfermline, KY12 7YD

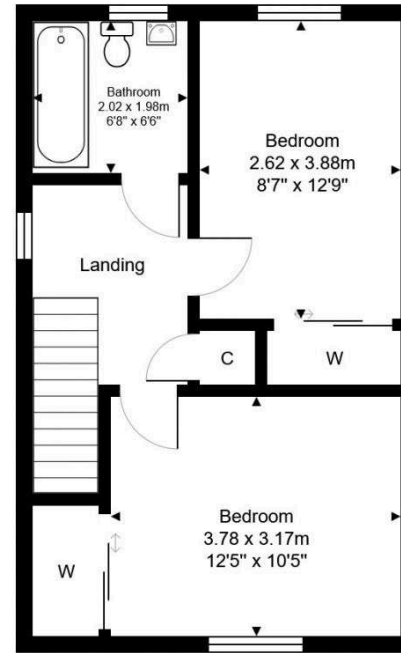


Total Area: 76.4 m² ... 822 ft²

All measurements are approximate and for display purposes only



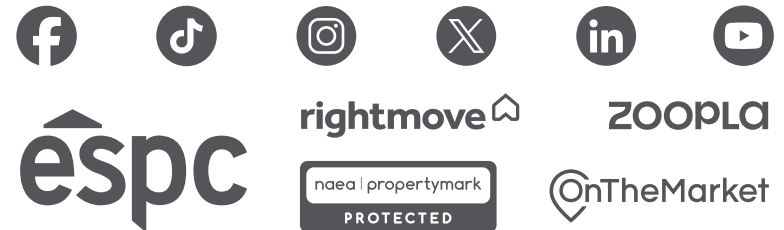
Ground Floor



1st Floor



SOLICITORS | PROPERTY
33 East Port, Dunfermline, Fife, KY12 7JE
Tel: 01383 620222 Fax: 01383 621213
www.morganlaw.co.uk



AGENTS NOTE These particulars do not form part of any contract and the statements or plans contained herein are not warranted nor to scale. Approximate measurements have been taken by electronic device at the widest point. Services and appliances have not been tested for efficiency or safety and no warranty is given as to their compliance with any Regulations. No movable items will be included in the sale.