

Boardwalk

# Wootton Road

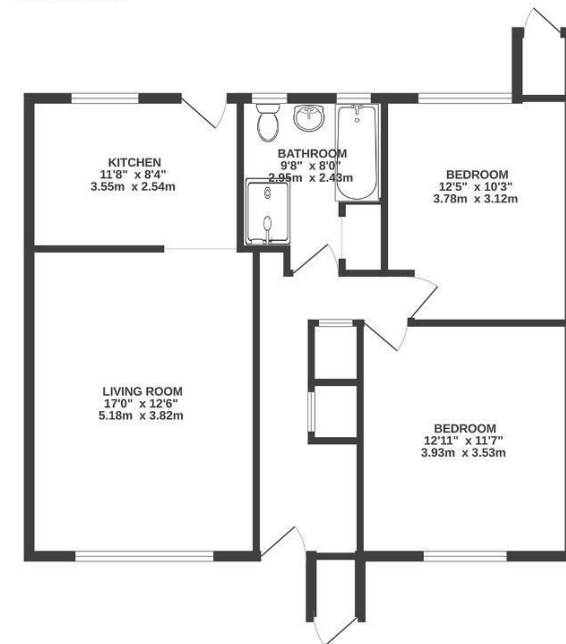
, BRISTOL

## Wootton Road ST. ANNES

APPROXIMATE FLOOR AREA  
72 SQM / 776 SQFT



GROUND FLOOR



Boardwalk

# Wootton Road

, BRISTOL



£285,000



2 Bedrooms



BS4 4AT



1 Bathrooms

*"The garden is our own private escape, just birdsong and the rustle of leaves from the woodland. Sitting with our morning coffee on the bench feels like stepping straight into the forest from the back door. It's really peaceful and has been perfectly safe for our two cats. Having two really good sized double bedrooms has also been a real benefit, with the second room working well as both an office and a comfortable guest space when we have visitors. Listening to records in the front room has been our fave family past time and has become a Sunday tradition."*

