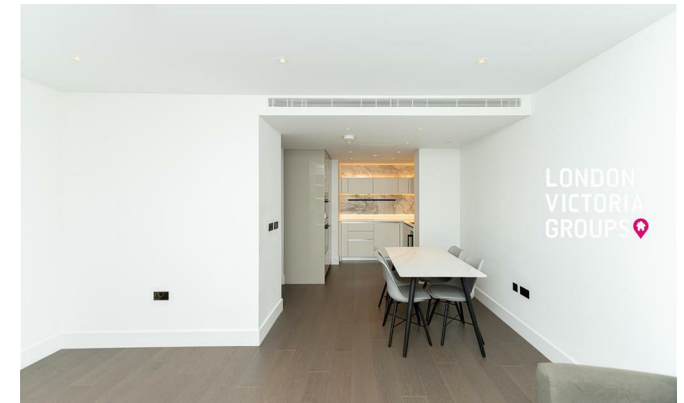


**LONDON  
VICTORIA  
GROUPS** 



## **Parkside Apartments, Cascade Way**

, London W12 7RD

- Two-bedroom, two-bathroom apartment
- Fully fitted contemporary kitchen
  - Lounge
  - Balcony
  - EPC-B
- Bright open-plan living and dining area
  - Gym | Spa | Swimming Pool
  - Garden
  - White City station
  - CTB-F

**£3,850 Per Month**

Local Authority **Hammersmith  
And Fulham**  
Council Tax Band **F**  
EPC Rating **B**

WHITE CITY LIVING

PARKSIDE RESIDENCES

ACCOMMODATION SPECIFICATION

SELECTOR

PLAY FILM

GALLERY

COLLECTION

BACK TO MASTERPLAN

YOU ARE LOGGED IN AS  
**WHITE CITY LIVING CHINA DESK**

SWITCH USER

PARKSIDE RESIDENCES

APARTMENT K7.08



2-Beds  
Seventh Floor  
Sold

Material Option: Elevation  
(Light)

Dims	m / ft
Kitchen	3.00 x 2.25
Living / Dining	5.05 x 4.67
Bedroom 1	4.90 x 3.97
Bedroom 2	3.56 x 2.79
<b>Internal Area</b>	<b>74.9 sq m</b>
Balcony	4.97 x 1.62
<b>Total Area</b>	<b>81.8 sq m</b>



CENTRAL GARDENS

FLOOR PLAN

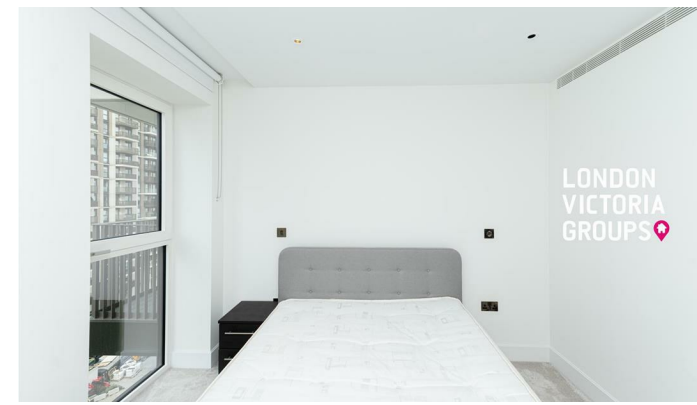
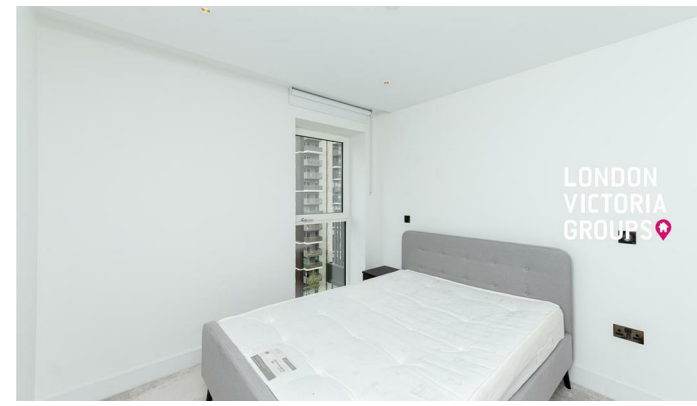
INTERIORS

MATERIAL OPTIONS

FLOORING OPTIONS

VIEWS

SPECIFICATION



LONDON VICTORIA GROUPS

LONDON VICTORIA GROUPS

LONDON VICTORIA GROUPS

**London Office Office**

Spaces Victoria, 25 Wilton Road, Pimlico,  
London, SW1V 1LW

**Contact**

020 3084 3094  
XL@londonvictoriagroups.co.uk  
www.londonvictoriagroups.co.uk

Agents Note: Whilst every care has been taken to prepare these particulars, they are for guidance purposes only. All measurements are approximate and for general guidance purposes only and whilst every care has been taken to ensure accuracy, they should not be relied upon and potential buyers/tenants are advised to recheck the measurements.