



## Coldershaw Road, W13

£440,000

Two bedroom ground floor maisonette with a private garden.

Also comprises kitchen, living room and bathroom presented in good condition.

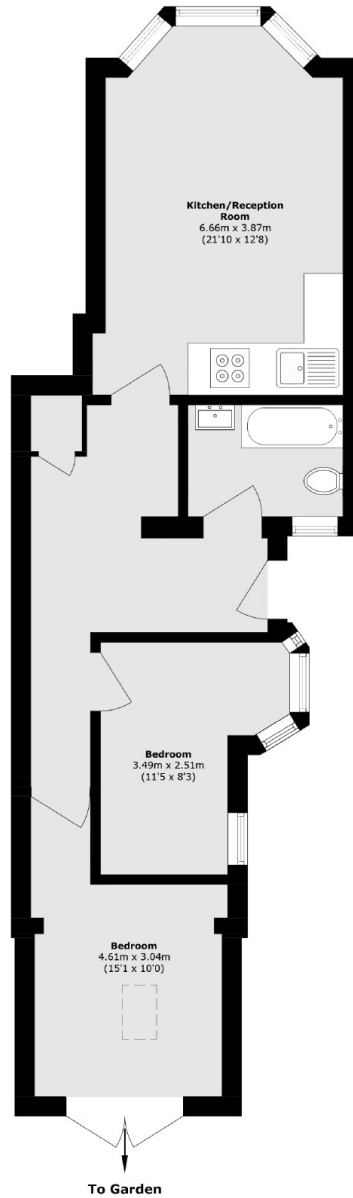
Well located within walking distance of the Elizabeth line at West Ealing station and also in easy reach of the Piccadilly line at Northfields Station.

Offered with long lease and no onward chain.

### Features

Garden Flat  
Two Double Bedrooms  
Open-Plan Living Area  
Maisonette  
No Onward Chain  
Close to Elizabeth Line

# Coldershaw Road, London, W13



Total area (approx.): 58.3 sq. m (627.5 sq. ft)