



Room 2

The Turnstones | | Watford | WD25 9SB

£850 Per Month



**LEAFY
ESTATES**

Key features

- Spacious Double Rooms in Watford WD25
All Bills Included
- Shared bathroom and toilet with one other tenant only
- Garston Station located approximately 0.4 to 0.5 miles away, around a 10-minute walk
- Smart TV included in a newly refurbished, fully furnished room

Description

A luxury and spacious double room is available in a newly refurbished house in Watford WD25, Hertfordshire. The property has been finished to a high specification throughout, offering modern, clean and comfortable living, ideal for professional females or mature students seeking a peaceful house share in Watford.

Situated in a quiet residential area in North Watford, the property is conveniently located close to Garston, Watford North and Watford Junction stations, providing excellent transport links to London Euston and surrounding areas.

ROOM AVAILABLE

Large Double Room

- * Bright and spacious with excellent natural light
- * Newly refurbished and fully furnished to a high standard
- * Shared bathroom and toilet with one other tenant only

Room includes:

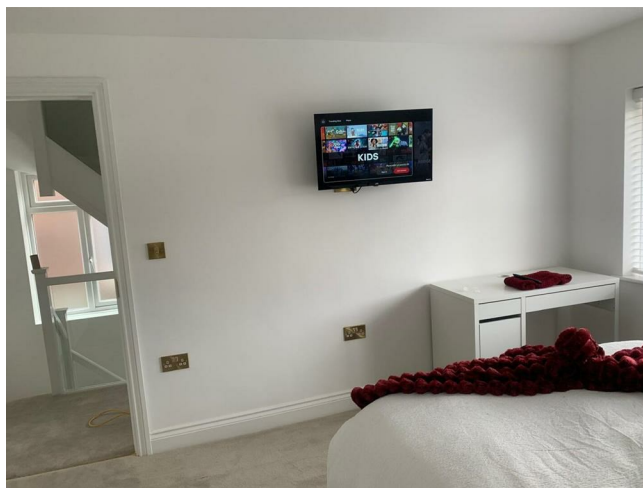
- * Double bed with under-bed storage
- * Spacious double wardrobe
- * Dedicated desk ideal for working from home
- * Smart TV included
- * High-speed WiFi

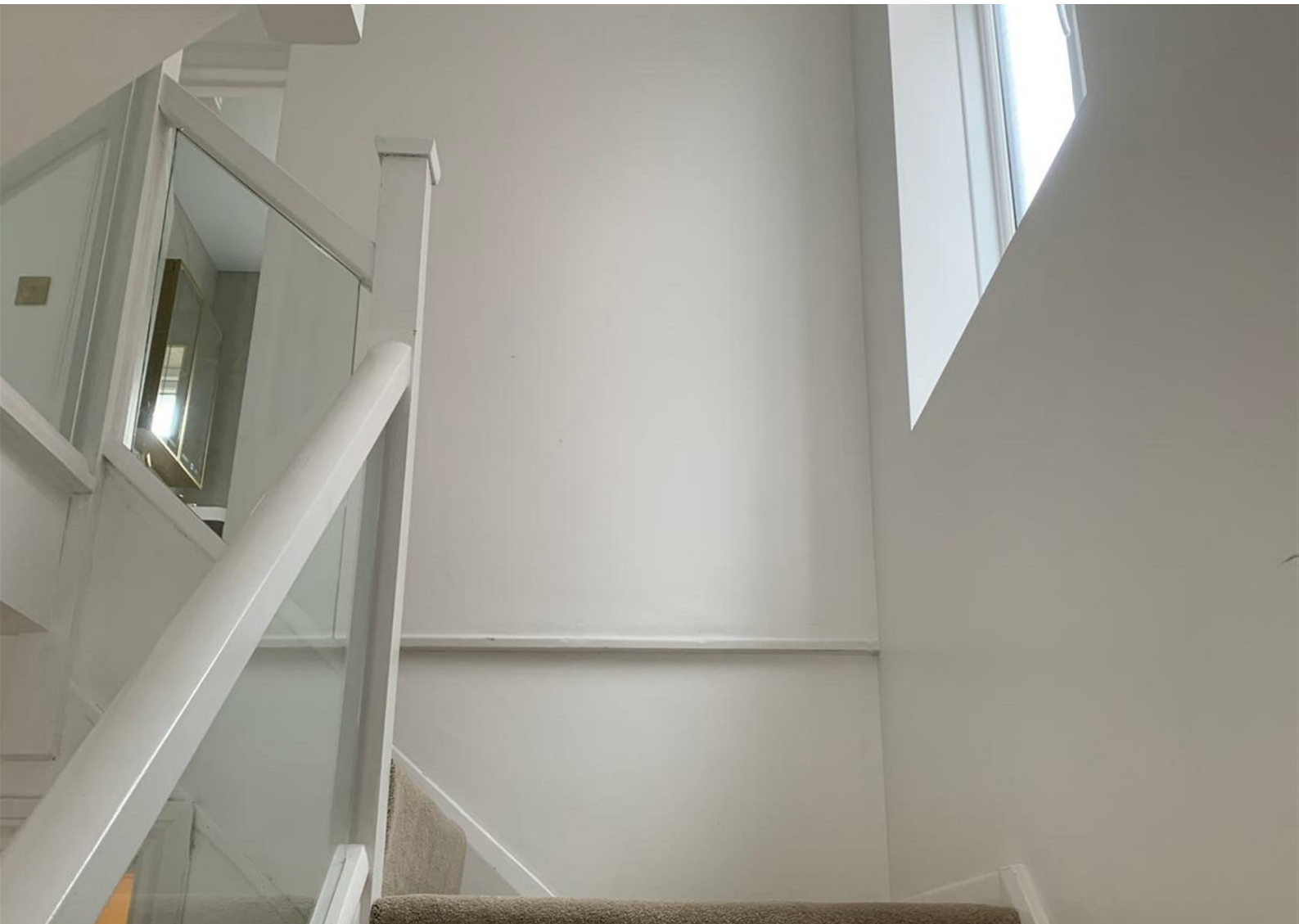
PROPERTY FEATURES

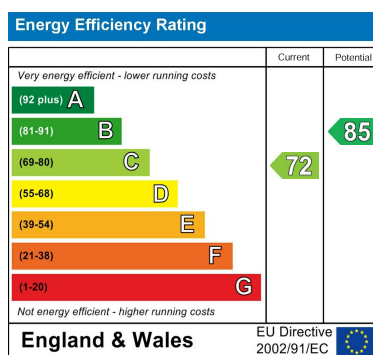
- * Fully refurbished house in Watford WD25
- * Modern, high-spec interiors throughout
- * Bathroom shared with one other tenant only
- * Contemporary kitchen with brand-new appliances
- * Quiet and well-maintained household (3 occupants in total)
- * Business-grade high-speed broadband suitable for remote working
- * All bills included (council tax, gas, electricity, water and WiFi)

This property is perfectly suited to tenants looking for a high-quality, professional

Directions







Council Tax Band D EPC Rating C



68 South Hill Avenue
Harrow
HA2 0NH
02081501988
info@leafyestates.co.uk
leafyestates.co.uk