



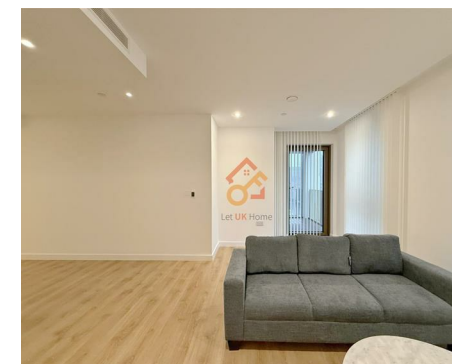
Let **UK** Home

1 Bedrooms

Flat

Located in London

£2,950 Per Month



info@letukhome.co.uk

<https://www.letukhome.co.uk/>

01795 358 886



222 Marsh Wall London

E14 9EN



Let UK Home present this brand new one bedroom property in One Thames Quay located near Canary Wharf.

The flat comprises a spacious open kitchen with a stylishly attached dining area, a magnificent living room leading to a large private balcony with great views, one bright bedroom with built-in wardrobes and one modern bathroom. Virtual viewing is available.

This apartment will offer a wealth of first-class amenities designed and a vast range of spaces for entertainment and relaxation to elevate residents' living experience, including a private lobby with concierge service, duck pin bowling, private media room and a 46th floor residents' lounge, sky gym and two large roof terraces.

The development is close to South Quay DLR Station, within easy walking distance. Canary Wharf Underground Station (Jubilee Line) is also a short stroll away. The Elizabeth Line, Jubilee Line and Docklands Light Railway (DLR) provide seamless connections to Central London and the West End. Besides DLR and underground services, residents can also travel by river and air. The Thames Clippers river buses run direct to Battersea, Embankment, Westminster and other destinations. The Emirates Air Line cable car offers a convenient river crossing to The O2 Arena. London City Airport is located just to the east.

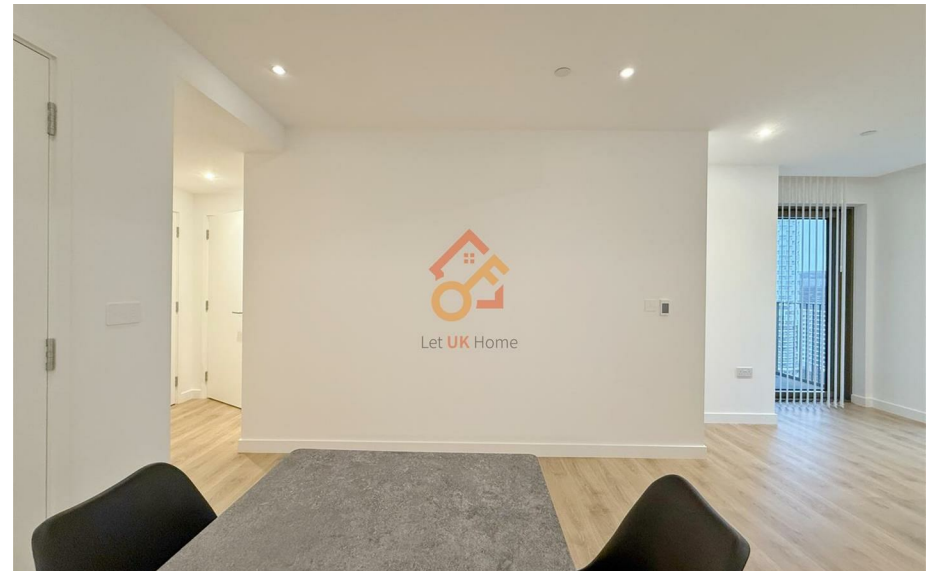
The development has a superior geographical location, allowing easy access to many prestigious universities in London, such as the UCL School of Management,

222 Marsh Wall London

£2,950 Per Month



- 18th Floor
- Bowling Alley
- The Gym
- Virtual Golf Suite
- Virtual Viewing Available.
- Concierge Service & 24h Security
- Residents Lounge
- Cinema & Game Room
- Co-working Space
- EPC Rating: B





Let **UK** Home

3F 2 Eastbourne Terrace
Paddington
London
W2 6LG

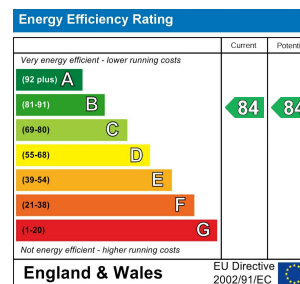
01795 358 886

info@letukhome.co.uk

Council Tax Band: E

Local Authority:

Agents Note: Whilst every care has been taken to prepare these particulars, they are for guidance purposes only. All measurements are approximate and are for general guidance purposes only and whilst every care has been taken to ensure their accuracy, they should not be relied upon and potential buyers/tenants are advised to recheck the measurements.



<https://www.letukhome.co.uk/>