

CHARLES  
STREET  
MAYFAIR  
W1





A fabulous Grade II listed townhouse with integrated mews in the heart of Mayfair, comprising approximately 7,511 sq ft with lift, double garage, two terraces and a balcony.

This spacious family home offers excellent entertaining space including a wonderful first floor drawing room, three further reception rooms, kitchen, utility room, four cloakrooms, principal bedroom with balcony, dressing room and en-suite bathroom, five further bedroom suites, study with terrace, further terrace and double garage.















**LOCATION**

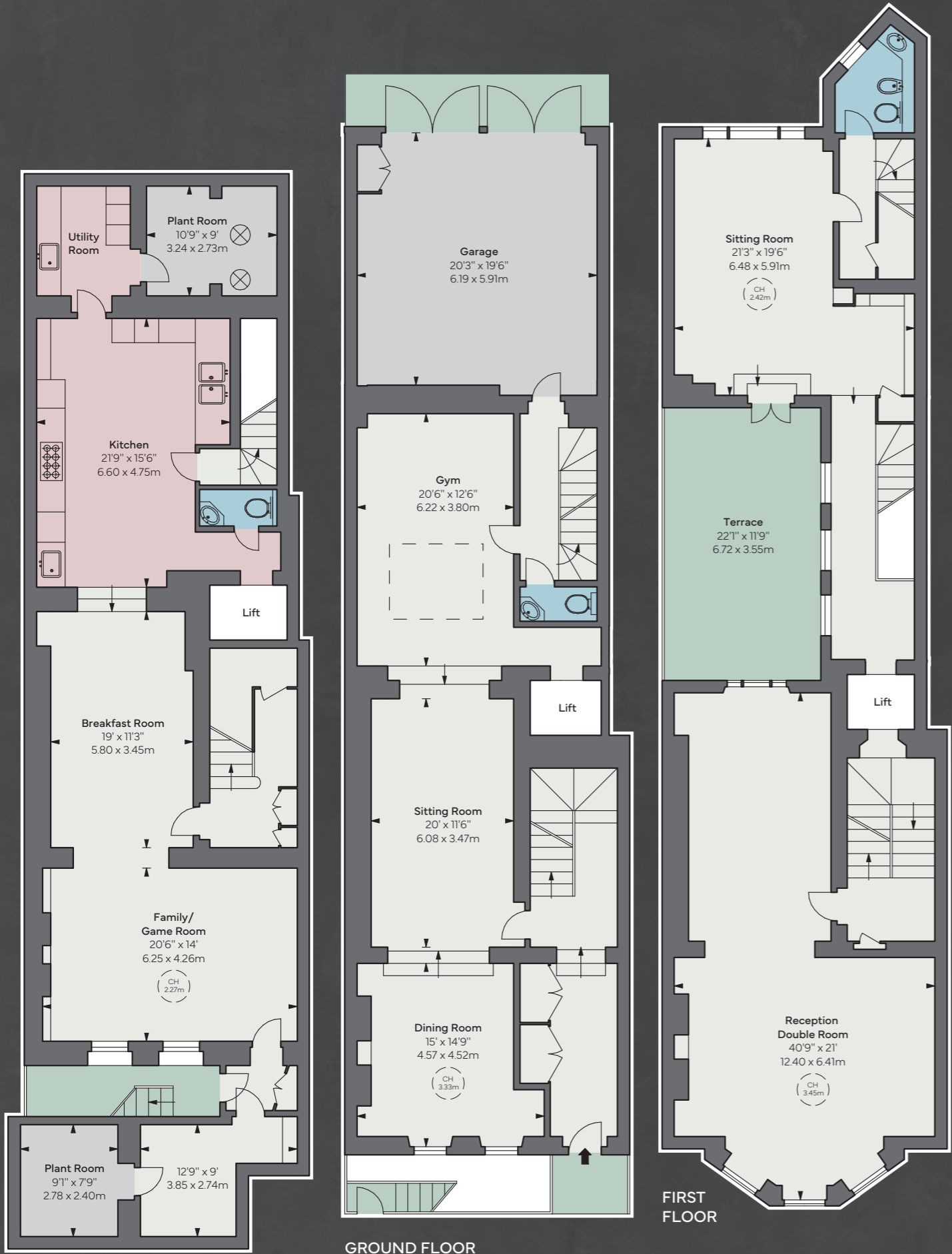
Charles Street is one of Mayfair's premier addresses which runs west from Berkeley Square and the house is situated at the quieter, western end of the street. It is well-located for Mayfair's internationally renowned shops, designer boutiques, hotels, restaurants, and private members' clubs. Hyde Park and Green Park are both nearby.

**TERMS**

Price: £14,950,0000  
Tenure: Freehold  
Local Authority: Westminster  
Council Tax: Band H

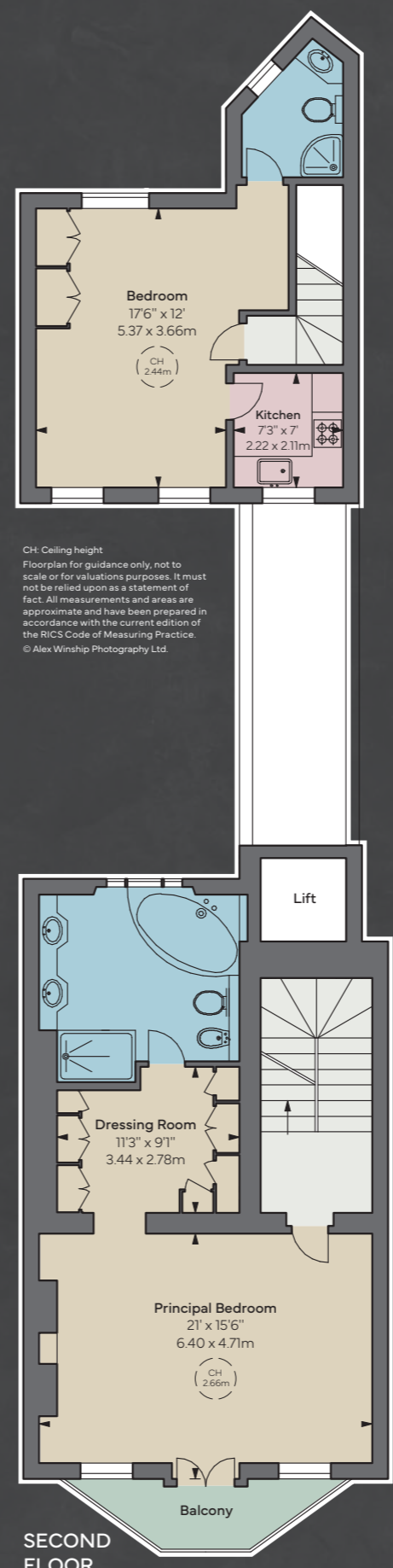




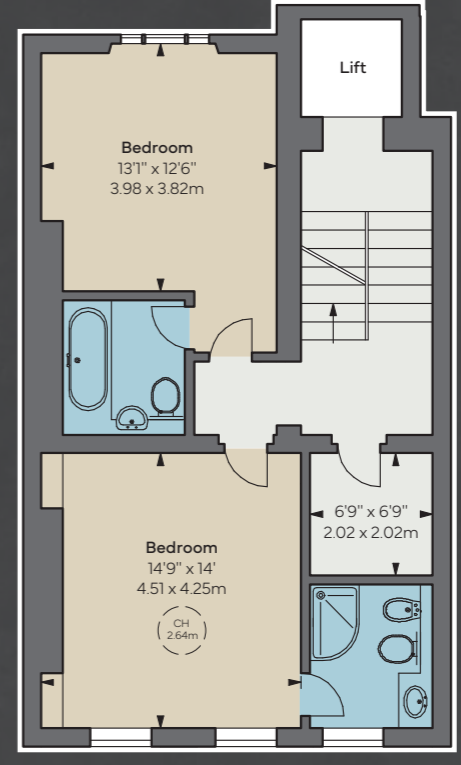


GROUND FLOOR

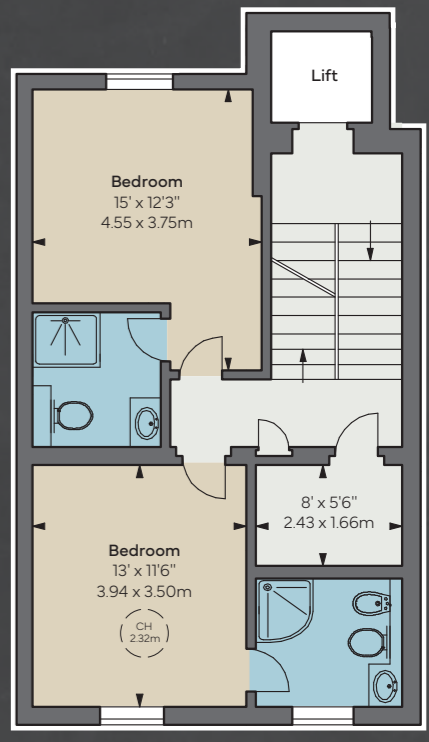
FIRST FLOOR



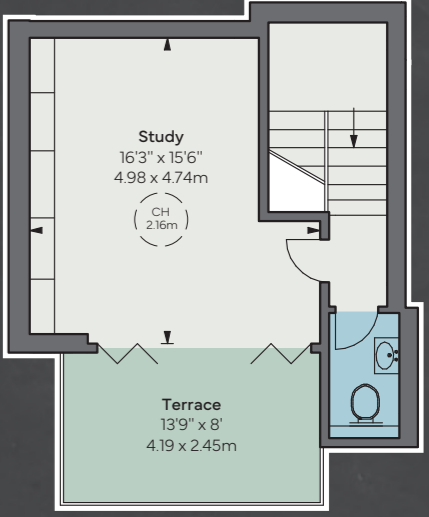
SECOND FLOOR



THIRD FLOOR



FOURTH FLOOR



FIFTH FLOOR

APPROXIMATE GROSS  
INTERNAL AREA  
7,511 sq ft / 697.87 sq m



CH: Ceiling height  
Floorplan for guidance only, not to scale or for valuations purposes. It must not be relied upon as a statement of fact. All measurements and areas are approximate and have been prepared in accordance with the current edition of the RICS Code of Measuring Practice.  
© Alex Winship Photography Ltd.



**BEAUCHAMP  
ESTATES**

**+44 (0)20 7499 7722**

24 Curzon Street, Mayfair, London W1J 7TF  
londonsales@beauchamp.com  
beauchamp.com

United  
Kingdom

**Sotheby's**

INTERNATIONAL REALTY

Marcus O'Brien

+44 7825 170 317  
mob@sothebysrealty.co.uk  
sothebysrealty.com