



Clive Court

Maida Vale, W9

Asking Price £475,000

This beautifully finished one-bedroom apartment spanning approximately 520 square feet is available on the rear side of the fourth floor of this well-known and popular purpose-built block in Maida Vale. The block has 24 hour portorage and a lift.

Benefitting from a west facing balcony off the open plan kitchen/living/dining space. There is a double bedroom and a separate bathroom.

Clive court is a short walk to Clifton Road for shops and cafes, and the beautiful Regent's canal.

CHESTERTONS



Clive Court

Maida Vale, W9

- A stunning west facing 1 bedroom apartment positioned on the 4th floor.
- Benefitting from a share in the freehold and exceptionally long underlying lease.
- Finished to a high specification throughout the apartment has abundant natural light.
- The block has portage and a lift.



Tenure: Share of Freehold 990 years 11 months

Service Charge: £4,596 Including a reserve fund contribution of £984 pa

Ground Rent: £0

Local Authority: City of Westminster

Council Tax Band: D

Chestertons Little Venice Sales

26 Clifton Road

Maida Vale

London

W9 1SX

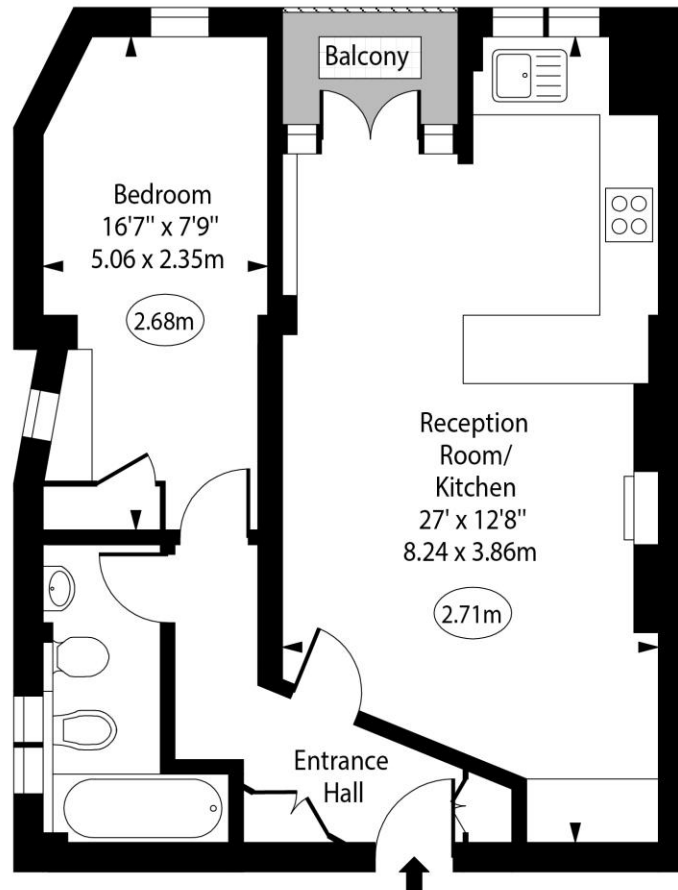
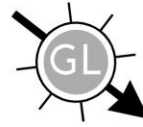
littlevenice@chestertons.co.uk

020 7286 4632

[chestertons.co.uk](https://www.chestertons.co.uk)

Clive Court, Maida Vale, W9

○ - Ceiling Height



Fourth Floor

Approx Gross Internal Area 522 Sq Ft - 48.50 Sq M

Every attempt has been made to ensure the accuracy of the floor plan shown. However, all measurements, fixtures, fittings, and data shown are approximate interpretations and for illustrative purposes only. Measured according to the RICS. Not To Scale.

www.goldlens.co.uk

Ref. No. 030406R

