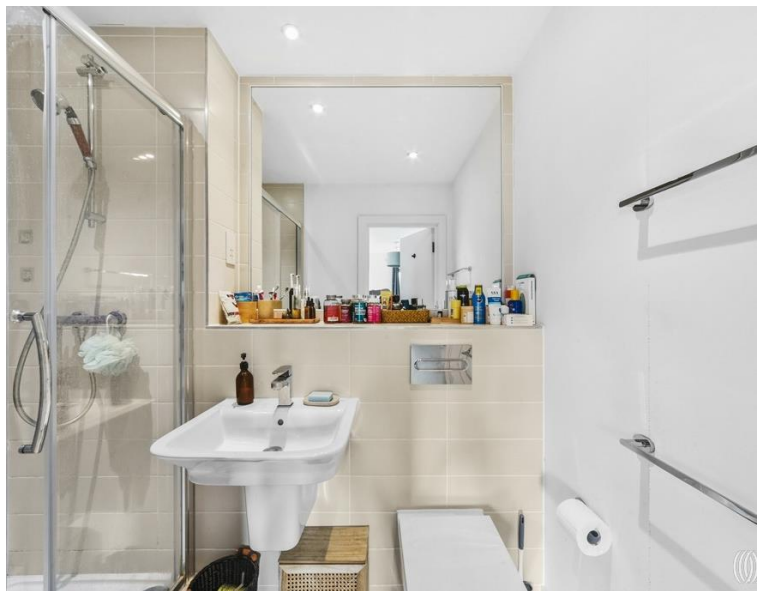
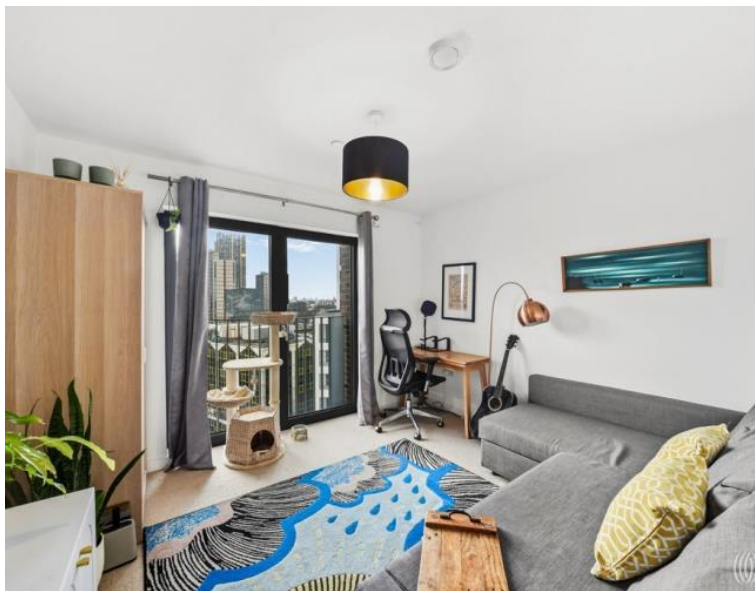


Great Eastern Road, London E15

£545,000 Leasehold







Description

This bright two-bedroom apartment in Stratford's Azure Building is located just minutes' walk from both Stratford station and Westfield shopping centre. The property features spacious interiors with good natural light, an open-plan living area, and a modern integrated kitchen. The master bedroom includes an en-suite, with a second bathroom serving the property.

Building amenities include 24-hour concierge, a residents' gym, and a roof terrace with London views. There's also a communal WiFi lounge suitable for working or socialising.

Stratford has been transformed since the 2012 Olympics into a thriving neighbourhood popular with professionals and families. Queen Elizabeth Olympic Park is on the doorstep, offering 560 acres of parkland, cycling and walking trails, playgrounds, and world-class venues including the London Stadium, London Aquatics Centre with its 50m Olympic pool and diving facilities, and Copper Box Arena. The park also hosts regular events, markets, and festivals throughout the year.

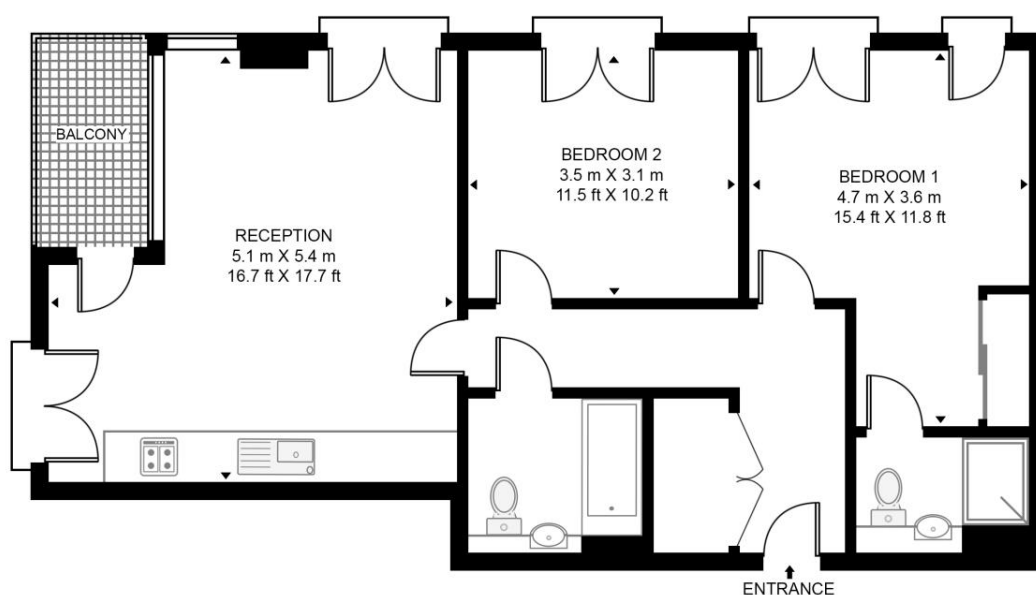
- Two bedrooms
- Two bathrooms (one en-suite)
- Balcony
- Residents' gym
- 24-hour concierge service
- Exclusive 360 roof terrace
- Bright spacious interiors
- Major transport hub proximity, within moments of Stratford station and Westfield Shopping Centre
- Communal WiFi lounge area
- EPC Rating B

Floorplan

752 sq ft | 70 sq m

AZURE BUILDING, GREAT EASTERN ROAD

APPROXIMATE GROSS INTERNAL FLOOR AREA 752 SQ.FT (69.9 SQ.M)



SEVENTH FLOOR



This floor plan has been defined by the RICS Code of Measurement. This floor plan and all others are for approximate representative purposes only and upon usage is agreed to as such by the client.

WWW: hdvirtualart.com | TEL: 0203.974.1567 | EMAIL: info@hdvirtualart.com

Stratford
5 Station Street,
London E15 1DA
+4420 3147 1500
Lettingsstratford@eu.jll.com

Urban living, your way.

jll.co.uk/residential

© 2019 Jones Lang LaSalle IP, Inc. All rights reserved. All information contained herein is from sources deemed reliable; however, no representation or warranty is made to the accuracy thereof.

