

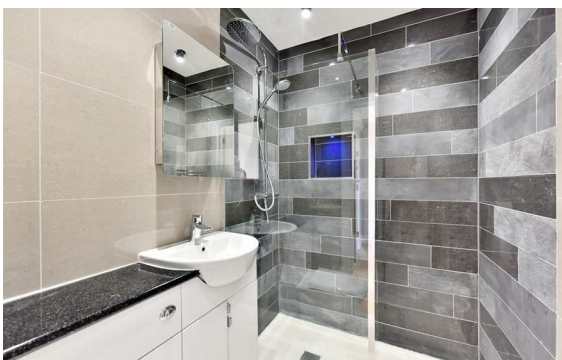
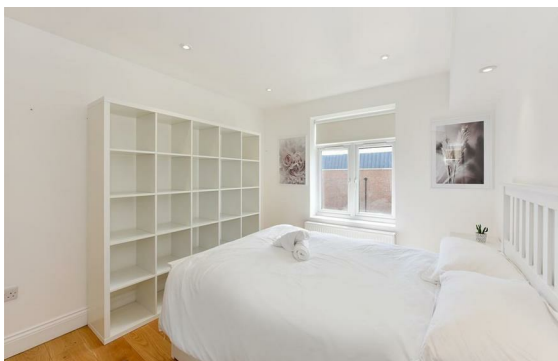


Blandford Street, Marylebone, London, W1U

Rent £900 Per Month

1 Bed | 1 Bath | 1 Reception

Please call us on 020 7724 2233 or email us info@newingtonstates.com to book a viewing.



A well-presented one-bedroom apartment offering comfortable living space and a practical layout in a prime central London location. The property comprises a spacious reception room, a separate fully fitted kitchen, a double bedroom, and a bathroom. Wooden flooring and good storage enhance the functionality, while the layout provides a bright and well-balanced living environment.

Ideally located in Marylebone, with excellent transport links via Bond Street Station and Oxford Circus Station. The property is just moments from Marylebone High Street and Oxford Street, with Regent's Park also within easy reach.

EPC Rating: D

Energy Efficiency Rating: D

Agents Note: Whilst every care has been taken to prepare these particulars, they are for guidance purposes only. All measurements are approximate and are for general guidance purposes only and whilst every care has been taken to ensure their accuracy, they should not be relied upon and potential buyers/tenants are advised to recheck the measurements.

NEWINGTON
— ESTATES —

60 Upper Montagu Street

London

W1H 1SN

020 7724 2233

info@newingtonstates.com

<http://www.newingtonstates.com>