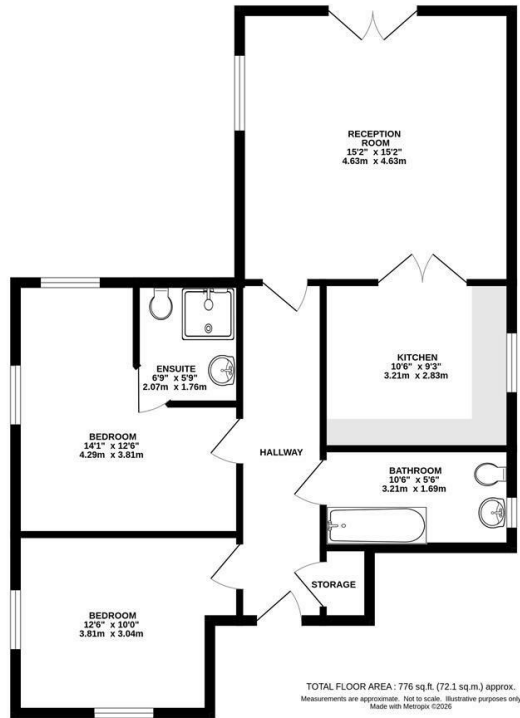




Keith
Ashton

St. Helens Mews,
Brentwood

GROUND FLOOR
776 sq.ft. (72.1 sq.m.) approx.



£325,000



1 Bridget House St. Helens Mews, Brentwood, CM14 4LL

We are delighted to bring to market this ground floor apartment, ideally situated close to Brentwood High Street and just half a mile from the mainline station, offering excellent transport links into London and beyond.

Offered with no onward chain, this well-presented home features a bright and comfortable reception room, along with a well-appointed kitchen fitted with a range of eye and base level units, ample worktop space, and integrated appliances. There are two double bedrooms, both dual aspect, with the principal bedroom benefiting from an ensuite shower room. A family bathroom completes the internal accommodation.

Externally, a secure gated entrance provides access to an allocated parking space, offering both convenience and peace of mind.



Energy Efficiency Rating		Environmental Impact (CO ₂) Rating	
Current	Potential	Current	Potential
Very energy efficient - lower running costs (82 plus) A		Very environmentally friendly - lower CO ₂ emissions (82 plus) A	
(81-81) B		(81-81) B	
(69-80) C		(69-80) C	
(55-68) D		(55-68) D	
(39-54) E		(39-54) E	
(21-38) F		(21-38) F	
(1-20) G		(1-20) G	
Not energy efficient - higher running costs		Not environmentally friendly - higher CO ₂ emissions	
EU Directive 2002/91/EC		EU Directive 2002/91/EC	

England & Wales

SERVICES:

Local Authority: Brentwood
Council tax band: D
Post code: CM14 4LL

VIEWING:

Strictly by prior arrangement with Keith Ashton Estate Agents

OPENING HOURS:

Monday to Friday: 8.45AM - 6.30PM | Saturdays: 9AM - 5.30PM | Sundays: 10AM - 2PM

MORTGAGE INFORMATION:

We offer the additional facility of an in-house Independent Financial Adviser who will access all mortgage lenders with the purpose of providing you with the benefit of choice. For quotations or comparables please call 01277 260858 or visit our interactive website at www.mortgagebusiness.net



We the Agent have not tested any apparatus, fittings or services for this property. The plot size is intended merely as a guide and has not been officially measured or verified by the Agent. Photographs are for illustration only and may depict items which are not for sale or included in the sale of the property. As part of the service we offer we may recommend ancillary services to you which we believe may help you with your property transaction. We wish to make you aware, that should you decide to use these services we will receive a referral fee. For full and detailed information please visit 'terms and conditions' on our website www.keithashton.co.uk

Brentwood
Tel. 01277 260858

Village Office
Tel. 01277 375757

Lettings Office
Tel. 01277 202200

Explore more @ www.keithashton.co.uk

