



Church Path

East Cowes

£140,000



Lancasters

A beautifully appointed ground floor, purpose built apartment. Located within the very scenic coastal town of East Cowes. The property consists of 1 large double bedrooms, spacious bathroom, and generous lounge/kitchen/diner. Just a short walk from the water front, glimpses of the sea and within easy access of Waitrose, town centre and the floating bridge. Allocated off street parking, and bike store - CHAIN FREE



1 Bedroom Ground Floor Apartment

Entrance

Your own front door from the street.

Lounge/Diner/Kitchen 23' 11" x 14' 1" (7.3m x 4.3m)

Open plan - multi-functional reception. Large reception and modern fitted kitchen area.

Bedroom 13' 1" x 10' 6" (3.99m x 3.2m)

Large bright double bedroom.

Bathroom 8' 4" x 6' 7" (2.53m x 2.0m)

Bath, with shower over and screen, w/c and basin.

Hall

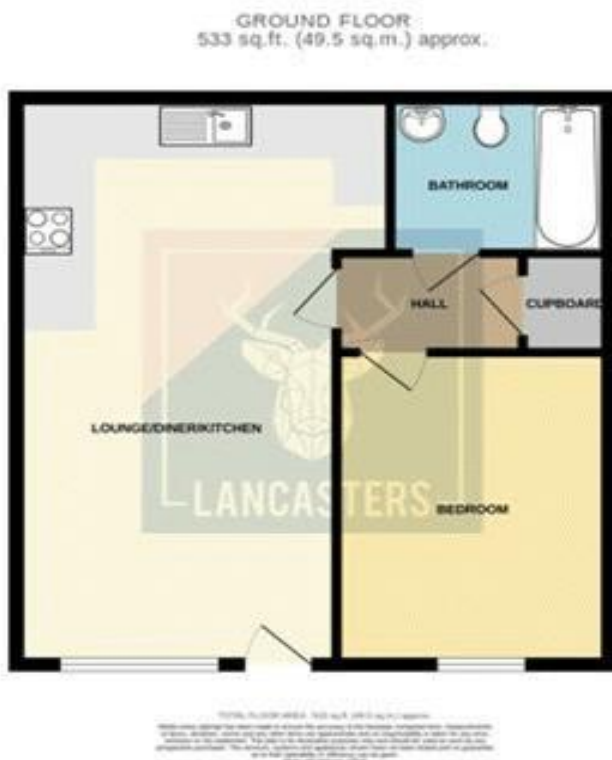
Complete with large storage cupboard.

Outside

Allocated parking space - use of a communal secure bike store.

Tenure

Lease Hold - The lease is for 150 years from 2013 Annual payment for ground rent is £200.00 with review every 15 years Service Charge £900 p.a this includes the Estate management £320.74 p.a



Want more photos and a video? Scan here

Lancasters Estate Agents
Osborne Court | The Parade | Cowes | Isle of Wight | PO31 7QS
01983 209020 Homes@Lancasters.org

Tenure: Leasehold
Council: B
EPC: B



These sales particulars do not form part of any contract. The agent has not undertaken any form of survey on the property and has not checked any services. If you decide to purchase this, or any other property, we advise you undertake your own enquiries via your separately appointed solicitor and surveyor.