

Rolfe East



Boileau Road, W5

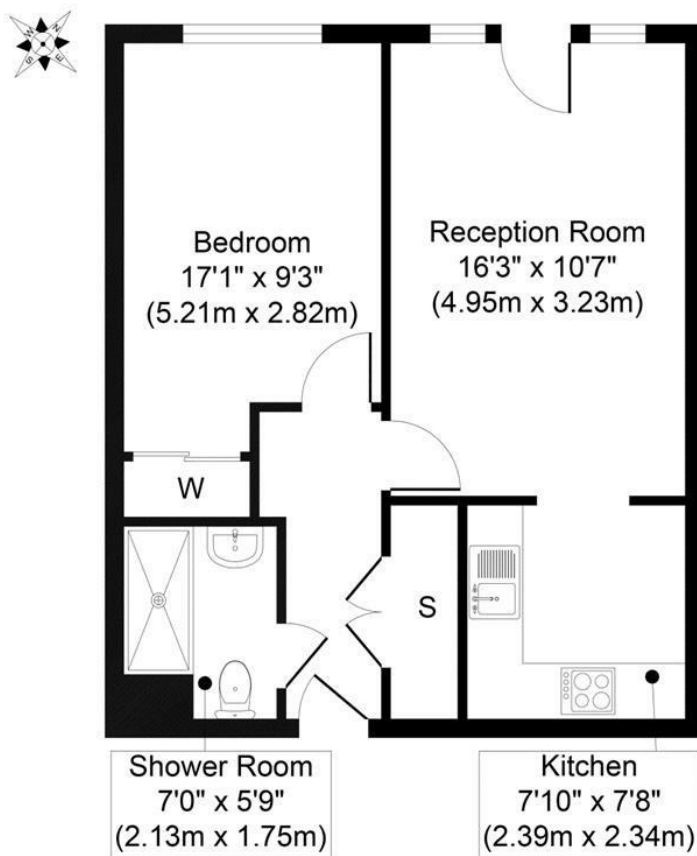
£1,295 pcm

- Communal laundry & lift to all floors
- Communal laundry
- EPC rating: C / council tax band: D
- Resident's lounge
- Lift to all floors
- No upper chain
- 24 hour emergency Apello call system
- Double glazed windows

18-19 The Mall, Ealing, W5 2PJ
020 8840 7707

ealinglettings@rolfe-east.com
<https://www.rolfe-east.com/>

Balcon Court, Boileau Road, Ealing W5 3AZ



Second Floor
Approximate Floor Area
489 sq. ft
(45.42 sq. m)

Approx. Gross Internal Floor Area 489 sq. ft / 45.42 sq. m

Measured in accordance with RICS guidelines. Every attempt has been made to ensure the accuracy, however, all measurements of doors are approximate. This plan is for illustrative purposes only and is not to scale.

Viewings

Viewings by arrangement only.
Call 020 8840 7707 to make an appointment.

Council Tax Band

D

EPC Rating:

Energy Efficiency Rating		
	Current	Potential
Very energy efficient - lower running costs		
(92 plus) A		
(81-91) B		
(69-80) C		83
(55-68) D	72	
(39-54) E		
(21-38) F		
(1-20) G		
Not energy efficient - higher running costs		
England & Wales	EU Directive 2002/91/EC	