



Price
£375,000

**Share of
Freehold**

2x  2x  1x 

**Penton House,
Christchurch Park,
Sutton, Surrey, SM2**

OVER 60?

Secure this property
for up to **59% less!**

cubitt & west
Helping you move forwards



Main features

- Sought after South Sutton location
- Well maintained communal areas and gardens
- Garage en-bloc
- Residents permit parking available
- Spacious living areas
- Walking distance to station and schools

Accommodation

SECOND FLOOR

Entrance Hall

Lounge: 18'1 x 18'0 (5.52m x 5.49m)

Kitchen: 10'0 x 7'2 (3.05m x 2.19m)

Bedroom 1: 11'6 x 10'6 up to fitted wardrobes (3.51m x 3.20m)

En Suite Shower Room

Bedroom 2: 11'4 x 11'1 (3.46m x 3.38m)

Bathroom: 7'1 x 5'4 (2.16m x 1.63m)

OUTSIDE

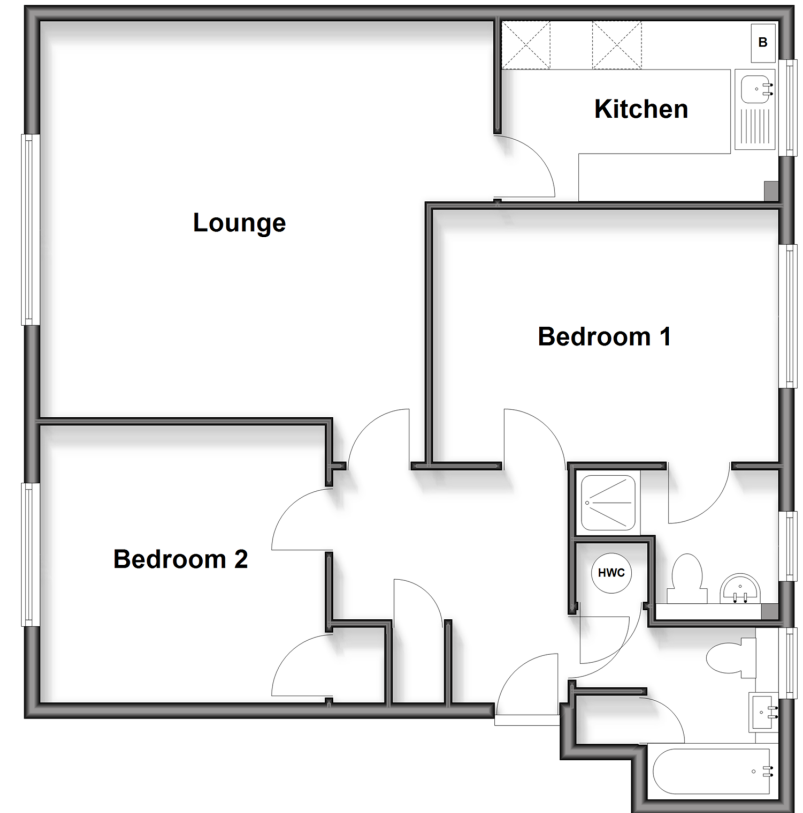
Communal Gardens

Garage En-Bloc

Residents Permit Parking

Second Floor

Approx. 80.6 sq. metres (867.2 sq. feet)



Call Sutton - 020 8661 0330 ■ cubittandwest.co.uk

- Legal advice should be taken to verify fixtures/fittings, planning, alterations and/or lease details
- Appliances & services are untested, dimensions are approximate and floor plans are not to scale
- Through a Homewise Home For Life Plan people aged 60+ can secure this property for up to 59% less, by purchasing a Lifetime Lease



22018316/20260207/CR/JB