



THANDIE HOUSE, NW10

£780,000

Two Bedroom
South & West Facing
Private Terrace
Open Plan Living
Turnkey Condition
EPC Rating B

@marshandparsons
marshandparsons.co.uk

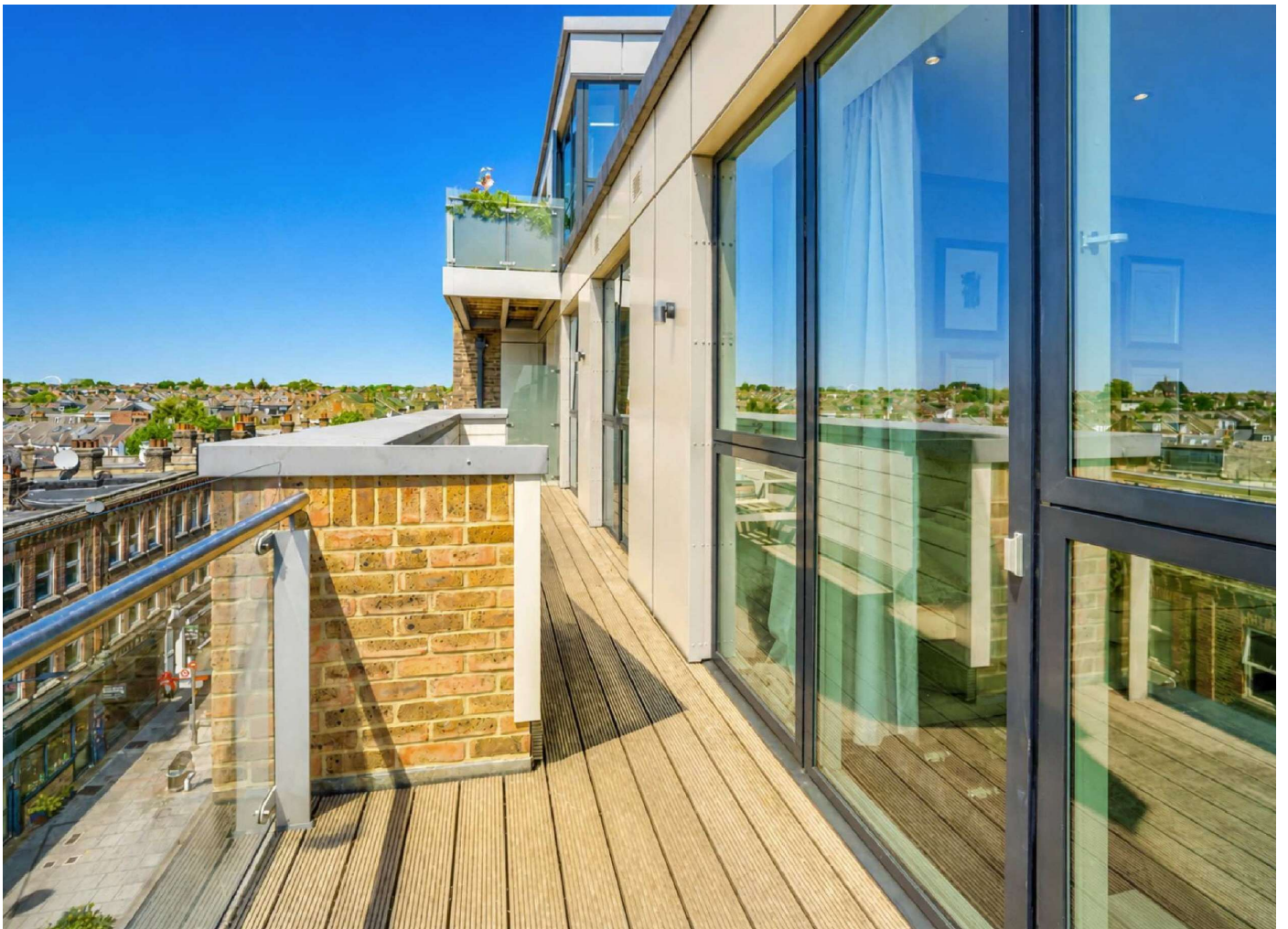
MARSH &
PARSONS

ABOUT THE PROPERTY

A well-presented two bedroom apartment set on an upper floor with south and west facing aspects, a private balcony and a spacious open plan living area.

Located close to Kensal Rise and Queen's Park, with a wide selection of independent cafés, restaurants and transport links nearby, ideal for buyers seeking a turnkey home.



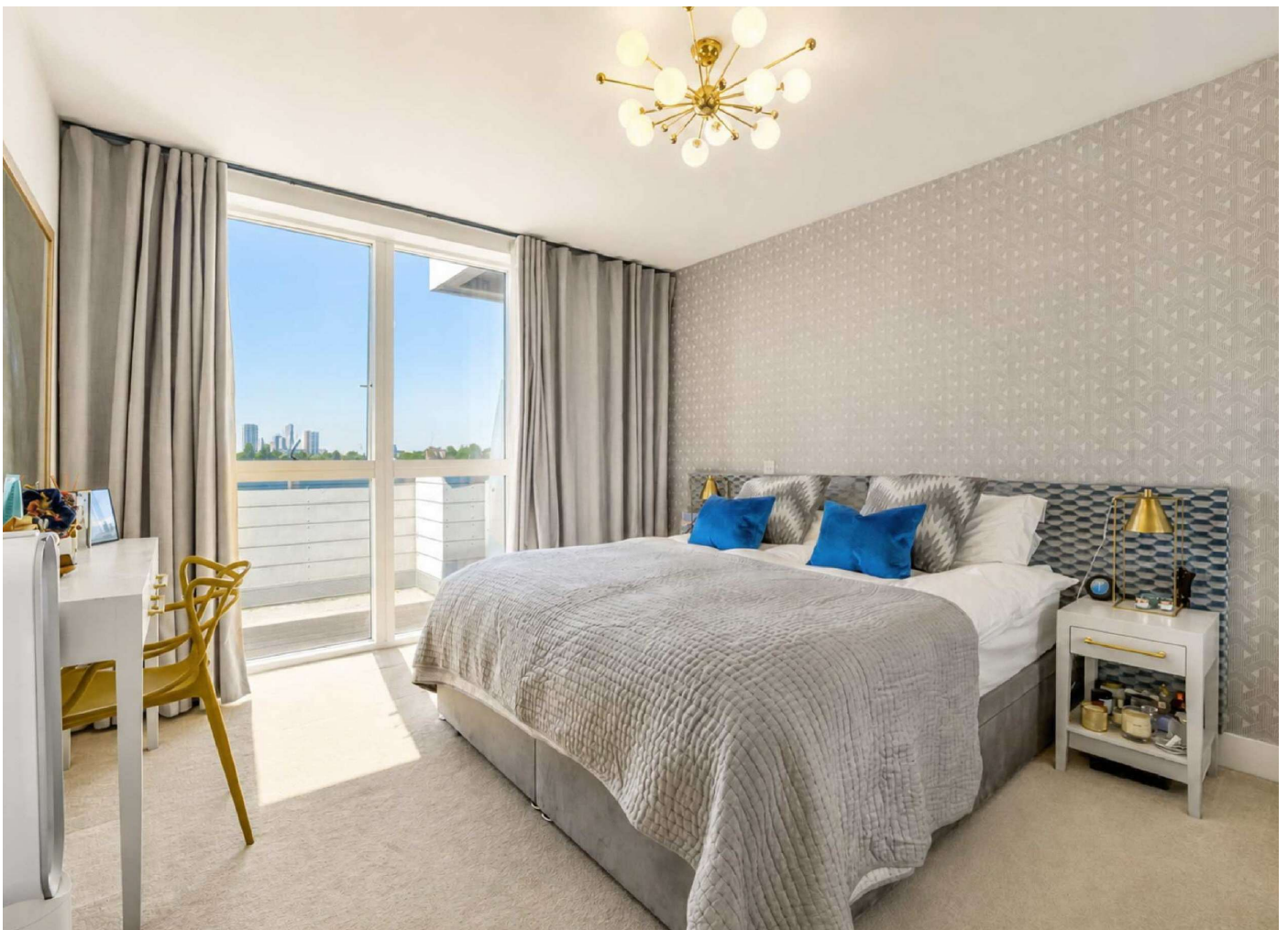




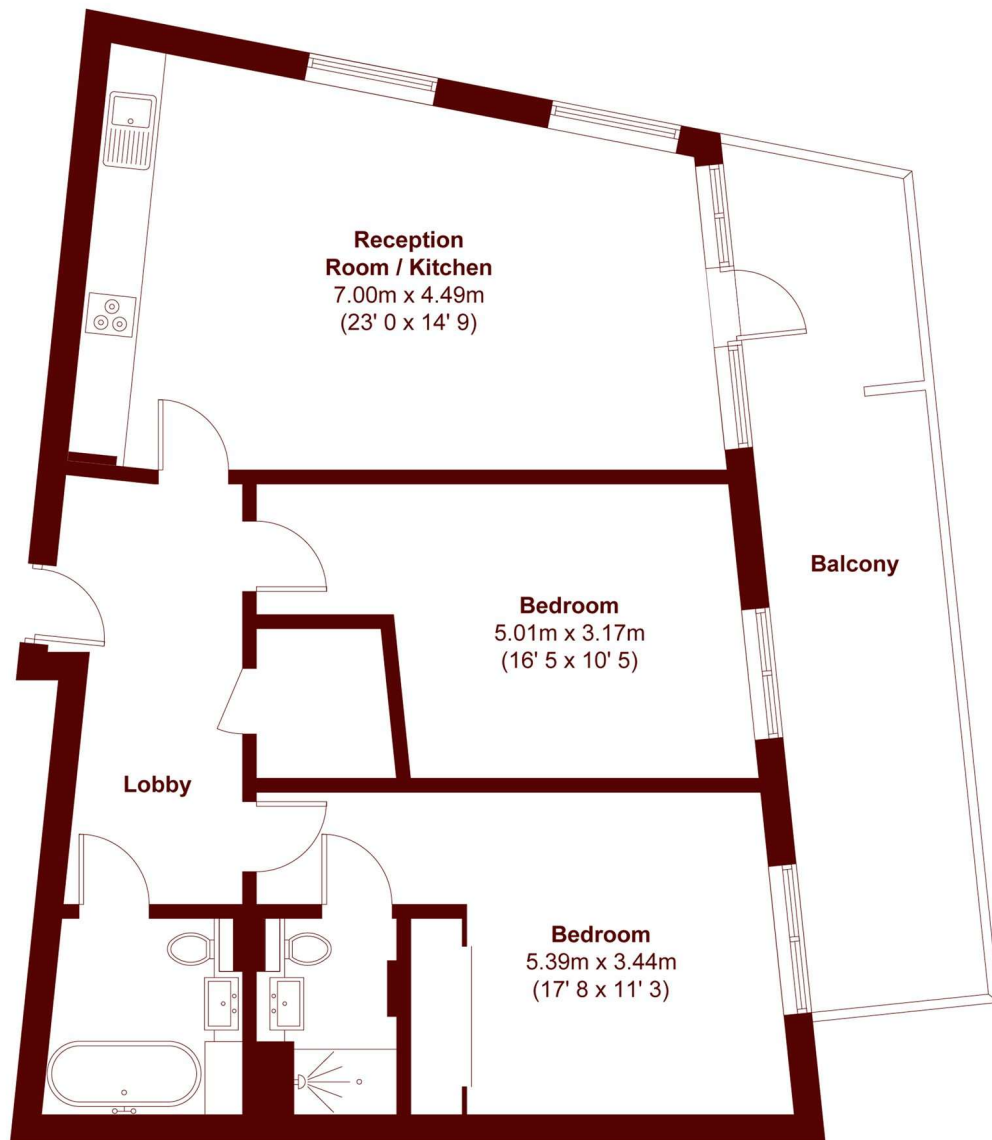
FURTHER DETAILS

This apartment is arranged over one floor and offers a well-balanced layout with a spacious open plan reception room and kitchen, ideal for both everyday living and entertaining. Large windows allow light to flow throughout the day, enhanced by the south and west facing aspect, with access onto a private balcony.

The balcony provides far-reaching views and is perfectly positioned to enjoy the evening light and sunset, adding a strong lifestyle element to the space. There are two well-proportioned double bedrooms with built-in storage, alongside a modern bathroom.



STEP INSIDE THANDIE HOUSE



APPROX. GROSS INTERNAL FLOOR AREA 841 SQFT / 78.1 SQM
APPROX. GROSS EXTERNAL BALCONY AREA 185 SQFT / 17.2 SQM

North Kensington
020 7313 8350

Energy Rating: B We aim to make our particulars both accurate and reliable. However, they are not guaranteed; nor do they form part of an offer or contract. If you require clarification on any points then please contact us, especially if you're traveling some distance to view. Please note that appliances and heating systems have not been tested and therefore no warranties can be given as to their good working order

MARSH &
PARSONS