



# Flat 3

16 St. Clements Road, Bournemouth

Council Tax band: A

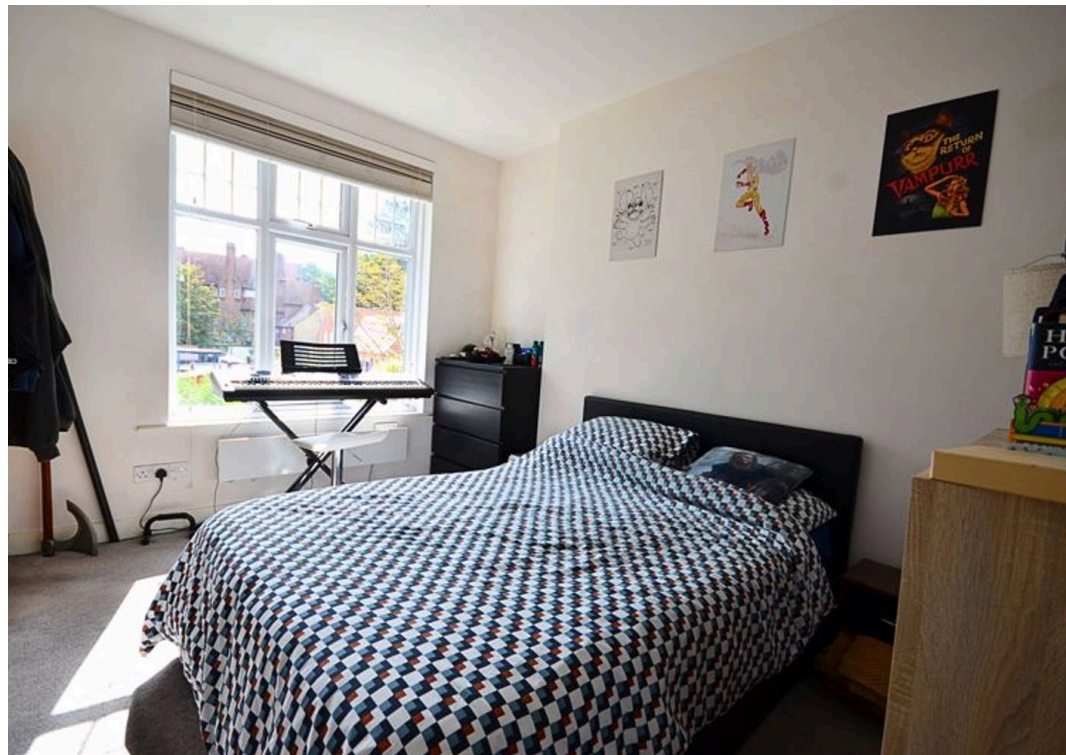
Tenure: Leasehold

EPC Energy Efficiency Rating: C

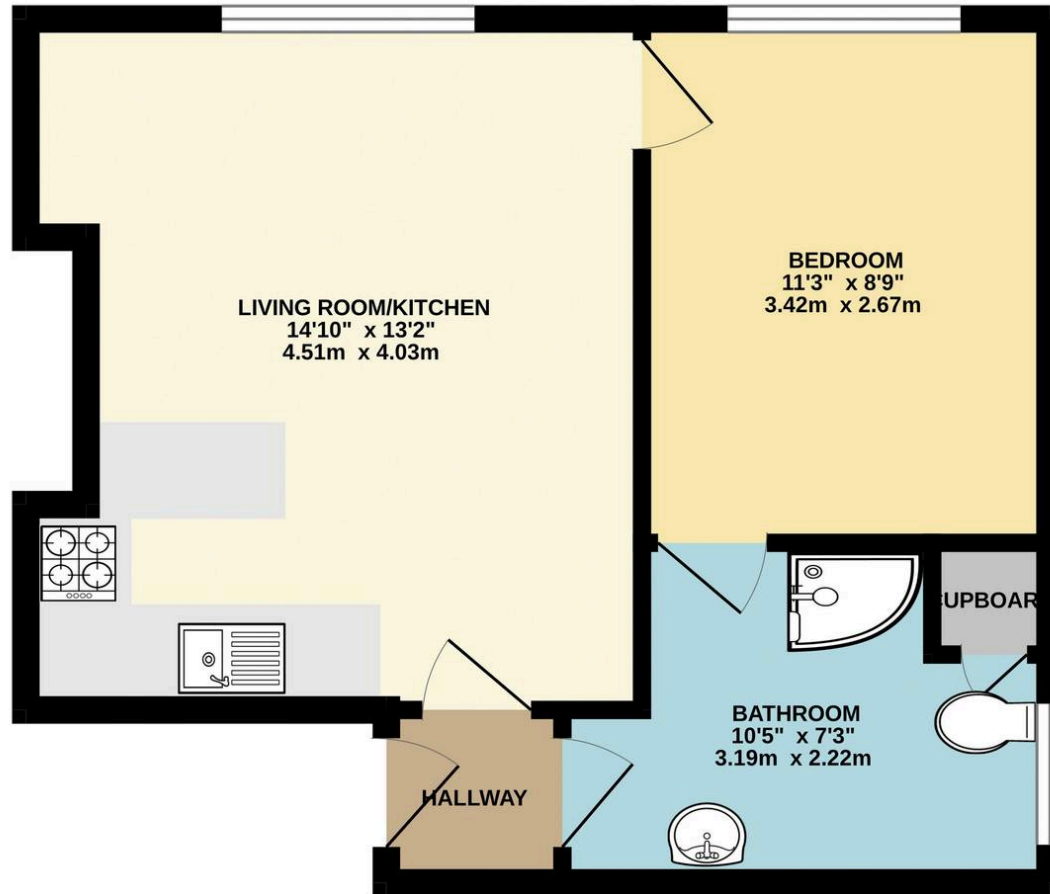
EPC Environmental Impact Rating: C

- Character First Floor Flat Situated In A Small Block
- One Double Bedroom
- Modern Shower Suite
- Open Plan Lounge & Fitted Kitchen
- Pets Allowed
- Gas Central Heating & UPVC Double Glazing
- Lease - 152 Years Remaining
- Short Distance To Award Winning Beaches
- Easy Reach To High Street, Park & Train/Bus Station
- Non Restricted On Road Parking





GROUND FLOOR  
370 sq.ft. (34.4 sq.m.) approx.



TOTAL FLOOR AREA : 370 sq.ft. (34.4 sq.m.) approx.

Whilst every attempt has been made to ensure the accuracy of the floorplan contained here, measurements of doors, windows, rooms and any other items are approximate and no responsibility is taken for any error, omission or mis-statement. This plan is for illustrative purposes only and should be used as such by any prospective purchaser. The services, systems and appliances shown have not been tested and no guarantee as to their operability or efficiency can be given.  
Made with Metropix ©2025