



Great Meadow Road  
Bristol BS32 8DF

**Price:**  
**Offers Over £130,000**



## Property Features

- One Bedroom Flat
- Cash Buyers Only
- No Onward Chain
- 63 Year Left On The Lease
- Off Street Parking



## Full Description

### Hallway

With night storage heater and storage cupboard. Airing cupboard housing hot water cylinder.

### Living Room

10'9" x 15'1"

Double glazed window to front and night storage heater.

### Kitchen

6'3" x 9'3"

A range of wall and base units with work surface over. Stainless steel sink and drainer, Space for undercounter fridge, space for electric oven with extractor fan over, tiled splashback, Archway to living room.

### Bedroom

15'1" x 8'9"

Two double glazed window to rear, radiator and fitted wardrobes.

### Bathroom

5'7" x 6'2"

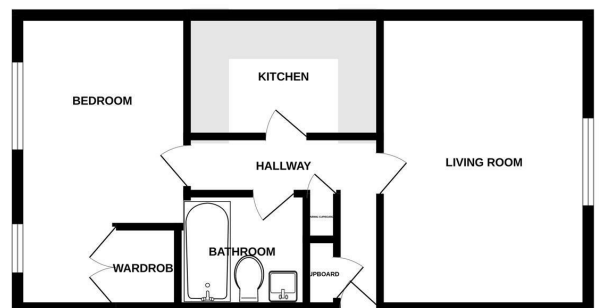
Suite comprising of a panelled bath with mixer tap and electric shower over, low-level WC, pedestal hand wash basin with mixer tap, part tiled walls and electric fan heater.

### Parking

Off street parking for one car.



GROUND FLOOR



Measurements are approximate. Not to scale. Illustrative purposes only.  
Made with Mettler 12024

4 Flaxpits Lane  
Winterbourne  
Bristol  
BS36 1JX

[www.aj-homes.co.uk](http://www.aj-homes.co.uk)  
[info@aj-homes.co.uk](mailto:info@aj-homes.co.uk)  
01454 252140

Agents Note: Whilst every care has been taken to prepare these sales particulars, they are for guidance purposes only. All measurements are approximate are for general guidance purposes only and whilst every care has been taken to ensure their accuracy, they should not be relied upon and potential buyers are advised to recheck the measurements