

**Aldreds**  
Estate Agents



1 Jessie Terrace Butt Lane

Burgh Castle, Great Yarmouth, NR31 9PU

£165,000



# 1 Jessie Terrace Butt

Burgh Castle, Great Yarmouth, NR31 9PU

This 2 bedroom mid-terraced house has a real 'cottage feel' and offers accommodation including an open sitting/dining room with an open fireplace, kitchen and utility room. Both bedrooms and the bathroom are off the landing. The property benefits from gas central heating, UPVC double glazing and has an enclosed rear garden.

## Sitting Room

12'10" x 10'0" (3.91m x 3.05m)

UPVC entrance door with double glazed panel. Open fireplace with brick surround. Smooth plaster ceiling. Coving. UPVC double glazed window to front aspect.

## Dining Room

12'9" x 10'5" (3.89m x 3.18m)

Radiator. Telephone point. Staircase to first floor landing. Smooth plaster ceiling. Coving. Panelled door with decorative glazed panels to kitchen.

## Kitchen

12'6" x 9'2" (3.81m x 2.79m)

Worktops with cupboards and drawers below. Stainless steel one and a half bowl single drainer sink with mixer tap. Tiled splashback. Matching wall cupboards. Open corner display shelves. Built-in fan assisted oven and grill. Four ring gas hob with a concealed extractor above. Utility space below worktop for refrigerator. Quarry tile floor. Radiator. UPVC double glazed window and door to a shingle pathway leading to the rear garden.

## Utility Room

6'3" x 4'0" (1.91m x 1.22m)

Plumbing for washing machine. Wall mounted gas fired boiler. Coved and textured ceiling. UPVC double glazed window to side.

## First Floor

## Landing

Panelled doors with decorative glazed panels to both bedrooms and bathroom of the landing. Coved and textured ceiling with loft access hatch.

## Bedroom 1

12'9" x 10'1" (3.89m x 3.07m)

Radiator. UPVC double glazed window to front aspect.

## Bedroom 2

10'5" x 7'5" (3.18m x 2.26m)

Radiator. UPVC double glazed window to rear aspect.





#### Bathroom

9'0" x 6'2" (2.74m x 1.88m)

White suite comprising a panelled bath with tile surround and mixer tap with shower attachment. Pedestal wash basin with tile splashback. WC. Radiator. Built-in storage cupboard. Textured ceiling. UPVC double glazed window to side.

#### Outside

Small low maintenance front garden. A shingle pathway leads from the kitchen door to the private rear garden which is enclosed by fencing with shrubs, shingle and slate areas and a paved patio. There is a gate to the side boundary for access to Mill Road.

#### Agent's Notes:

1. A flying freehold exists above the utility room.
2. The freeholder of the flats and has allowed the vendor to park his car beyond the side gate to his garden although no formal arrangement exists.

#### Tenure

Freehold.

#### Services

Mains water, gas, electricity and drainage are connected.

#### Council Tax

Great Yarmouth Borough Council - Band A

#### Location

Belton is situated 3 miles west of Gorleston and 5 miles from Great Yarmouth \* There are a selection of local shops \* Primary and Middle schools \* The River Waveney runs through the adjoining village of Burgh Castle with its historic Roman site and Marina \* There are regular bus services to Great Yarmouth.

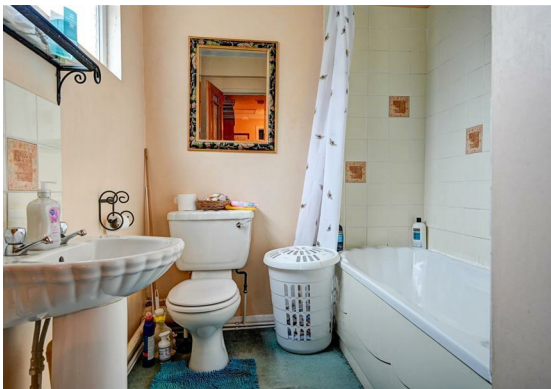
#### Directions

Leave Gorleston on the A143 Beccles Road and continue through Bradwell. Turn right at the roundabout (3rd exit) onto New Road. Continue into Belton and turn right at the mini roundabout onto Stepshort. Follow the road to Burgh Castle where the property can be found on the right hand side, immediately after Mill Road.

#### what3words

///encrusted.fulfilled.lifelong

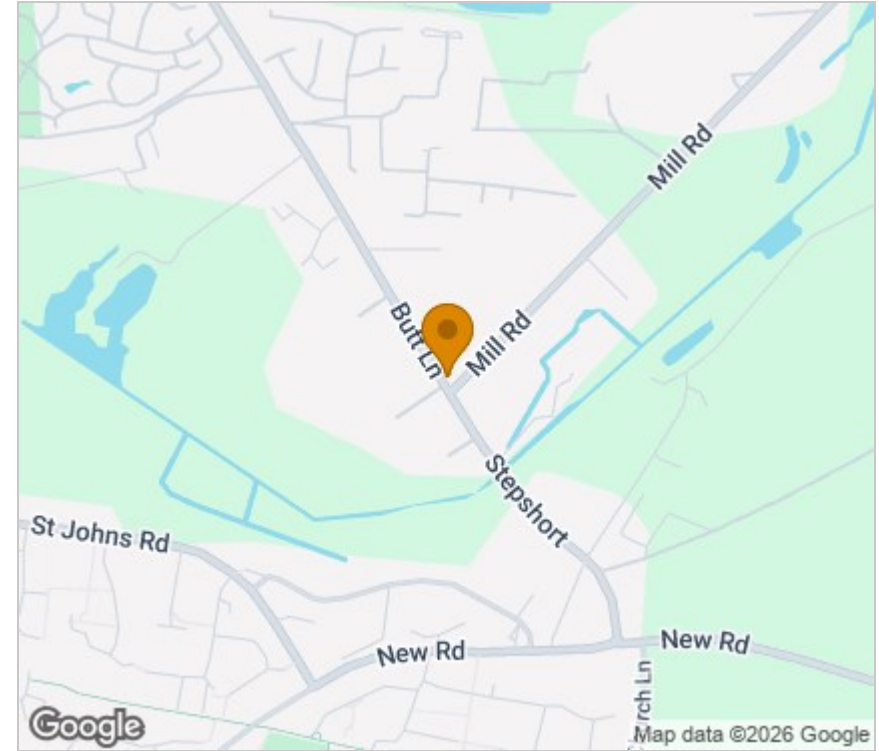
Ref: G18448/02/26



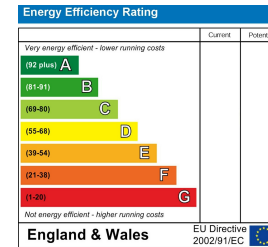
## Floor Plan



## Area Map



## Energy Efficiency Graph



## Viewing

Please contact our Aldreds Gorleston Office on 01493 664600 if you wish to arrange a viewing appointment for this property or require further information.

### Disclaimer

These particulars are issued on an understanding that all negotiations shall be conducted through Messrs. Aldreds. Please note: Messrs. Aldreds for themselves and for the vendors or lessors of this property whose agents they are given notice that: 1. Particulars are set out as a general outline only for guidance of intending purchasers or lessees, and do not constitute nor constitute part of, an offer or contract. 2. All descriptions, dimensions, references to condition and necessary permissions for use and occupation, and other details are given without responsibility and any intending purchasers or tenants should not rely on them as statements or representations of fact but must satisfy themselves by inspection or otherwise as to the correctness of each of them. 3. No person in the employment of Messrs. Aldreds has any authority to make or give any representation or warranty whatever in relation to this property. 4. If you are proposing to visit the property and are travelling some distance please check with Aldreds on the issue of availability prior to travelling. 5. Aldreds Property Consultants and associated services may offer additional services to the prospective purchaser for which they will be entitled to receive a commission.

Aldreds are pleased to be working with Mortgage Advice Bureau. They're an award-winning mortgage broker with over 1,400 advisers across the UK, and have access to over 12,000 mortgage products from over 90 lenders. Aldreds Estate Agents Ltd receive a commission of £200 on each completed case. Your home may be repossessed if you do not keep up repayments on your mortgage. There may be a fee for mortgage advice. The actual amount you pay will depend upon your circumstances. The fee is up to 1%, but a typical fee is 0.3% of the amount borrowed. Mortgage Advice Bureau is a trading name of Mortgage Seeker Limited which is an appointed representative of Mortgage Advice Bureau Limited and Mortgage Advice Bureau (Derby) Limited which are authorised and regulated by the Financial Conduct Authority. Mortgage Seeker Limited Registered Office: Lovewell Blake, Sixty Six North Quay, Great Yarmouth, Norfolk, NR30 1HE. Registered in England Number: 03721415. 6. Potential purchasers should check with their providers that the broadband and mobile phone coverage they would require is available.

149 High Street, Gorleston, Norfolk, NR31 6RB

Tel: 01493 664600 Email: [gorleston@aldreds.co.uk](mailto:gorleston@aldreds.co.uk) <https://www.aldreds.co.uk/>

Registered in England Reg. No. 08945751 Registered Office: 17 Hall Quay, Great Yarmouth, Norfolk NR30 1HJ

Directors: Mark Duffield B.S.c. FRICS. Dan Crawley MNAEA Paul Lambert MNAEA