

BRENNAN

BESPOKE

£110,000

Railway View

Kettering, NN16 8FE

PROPERTY SUMMARY

A fantastic opportunity to own a spacious one-bedroom ground floor flat in Charles Court, ideally located in the heart of Kettering town centre. With open plan living, a generous double bedroom, and a modern family bathroom, this property is perfect for first-time buyers, professionals, or investors seeking convenience and comfort in a prime location. Step inside to a welcoming open plan living and kitchen area, providing plenty of space for relaxing, dining, and entertaining. The large double bedroom offers a peaceful retreat, and the modern family bathroom is finished to a high standard. Situated right in the town centre, this flat puts you within walking distance of Kettering's shops, restaurants, and leisure facilities. Kettering Hospital and the railway station are both nearby, making it ideal for commuters and healthcare professionals alike. Flats in Charles Court are always in demand, contact us today to arrange your viewing and see all this fantastic property has to offer.

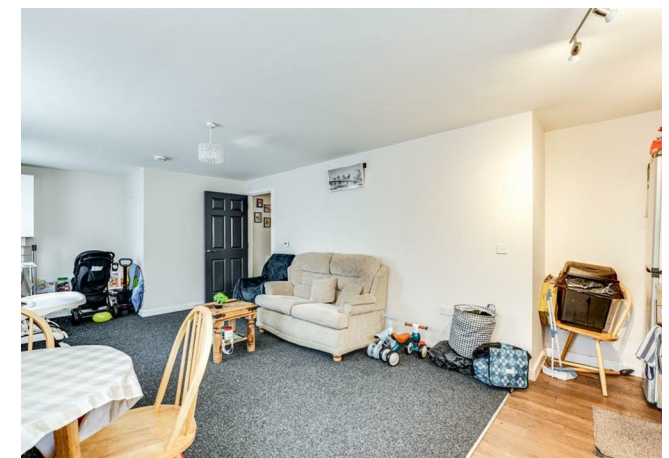
1

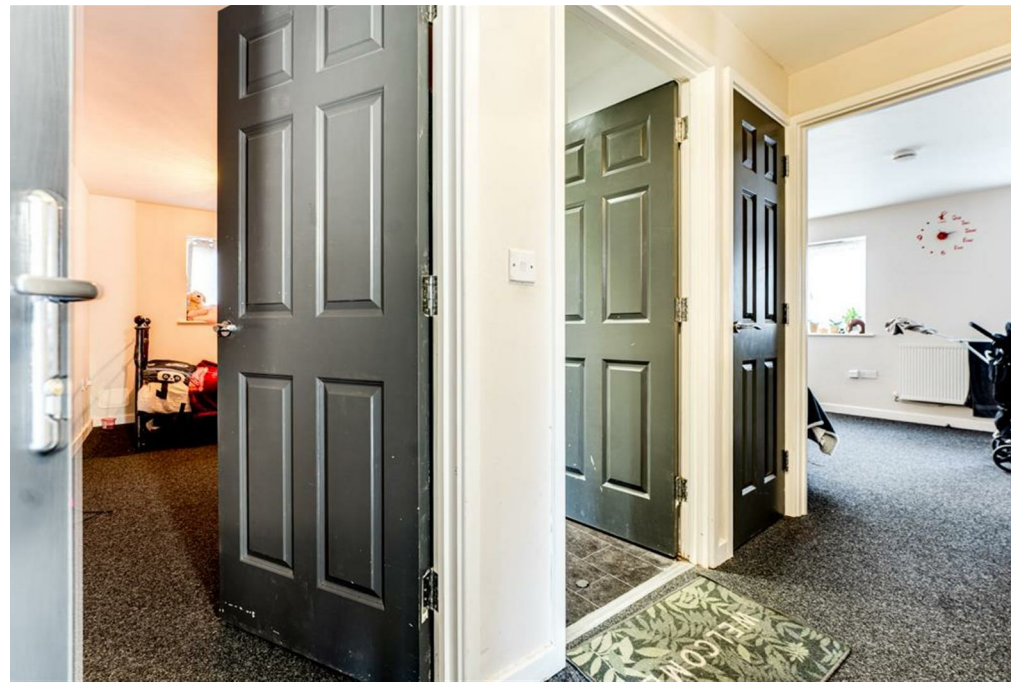


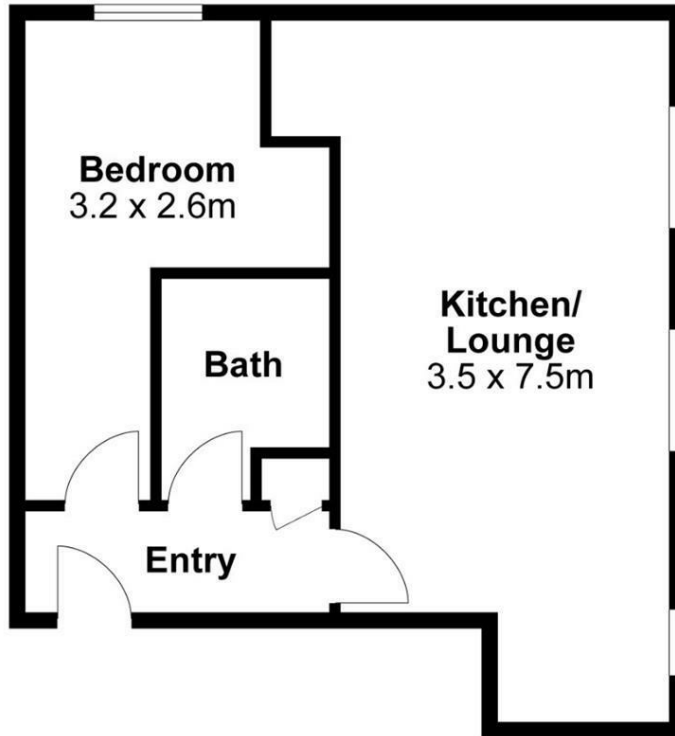
1



1







For identification only not to scale

Internal Area Approx. : 43m²

BRENNAN
BESPOKE

BRENNAN
BESPOKE

OFFICE ADDRESS

BRENNAN BESPOKE
2 The Tithe Barn Glendon Lodge Farm
Glendon
Kettering
Northamptonshire
NN14 1QF

OFFICE DETAILS

01536 904400
info@brennanbespoke.co.uk
<https://www.brennanbespoke.co.uk>

LOCAL AUTHORITY

TENURE

Leasehold

COUNCIL TAX BAND

A

VIEWINGS

By prior appointment only

Energy Efficiency Rating		
	Current	Potential
<i>Very energy efficient - lower running costs</i>		
(92 plus) A		
(81-91) B		
(69-80) C		
(55-68) D		
(39-54) E		
(21-38) F		
(1-20) G		
<i>Not energy efficient - higher running costs</i>		
England & Wales	EU Directive 2002/91/EC	

Agents Note: Whilst every care has been taken to prepare these particulars, they are for guidance purposes only. All measurements are approximate and are for general guidance purposes only and whilst every care has been taken to ensure their accuracy, they should not be relied upon and potential buyers/tenants are advised to recheck the measurements