



RIVERVIEW GARDENS, SW13

£875,000

Stylishly renovated
Two bedrooms
DeVol kitchen
Private balcony
Share of freehold
Riverside Village Lifestyle

@marshandparsons
marshandparsons.co.uk

MARSH &
PARSONS



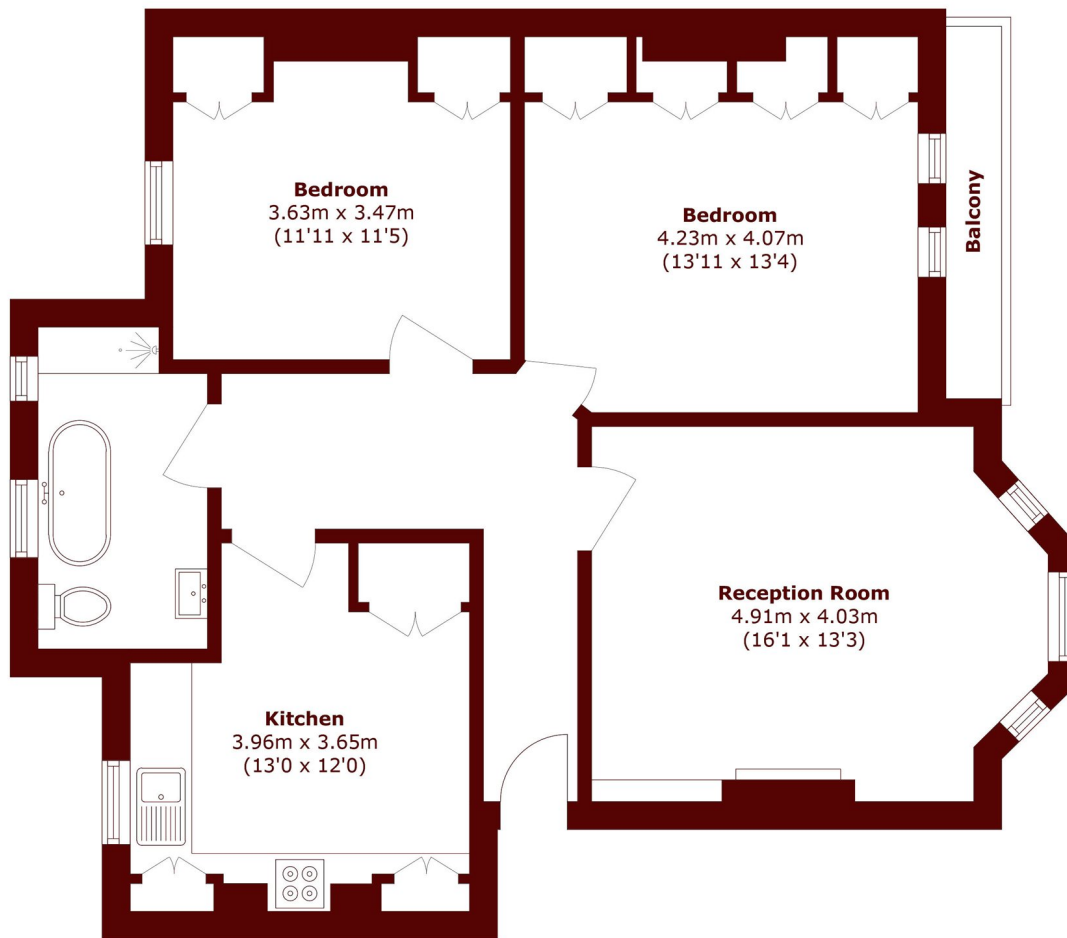
ABOUT THE PROPERTY

Set in a quiet spot near Hammersmith Bridge, this stylishly refurbished two bedroom mansion flat delivers bright, well-proportioned living spaces, enhanced by high ceilings and generous sash windows.

Just moments from Hammersmith Bridge and the scenic River Thames, this property offers superb transport links to the City, West End, and airports via the Piccadilly, District, and Hammersmith & City lines. It's within walking distance of top independent schools as well as excellent local primaries.



STEP INSIDE RIVERVIEW GARDENS



First Floor

Total area (approx.): 80.0 sq. m (861.1 sq. ft)

Balcony area (approx.): 2.4 sq. m (25.8 sq. ft)

Barnes & East Sheen
020 8563 8333

Energy Rating: C We aim to make our particulars both accurate and reliable. However, they are not guaranteed; nor do they form part of an offer or contract. If you require clarification on any points then please contact us, especially if you're traveling some distance to view. Please note that appliances and heating systems have not been tested and therefore no warranties can be given as to their good working order

**MARSH &
PARSONS**