



57 Chatsworth Road, Chichester, PO19 7XX

£285,000 Freehold



2 Bedrooms



1 Bathroom



1 Reception Rooms

SW

Sims Williams

Key Features

- Modern End Of Terrace House
- Garage In Compound
- Chain Free
- 2 Bedrooms
- Good Size Lounge
- Kitchen
- Popular Location
- Enclosed Rear Garden
- Allocated Parking Space

EPC Rating

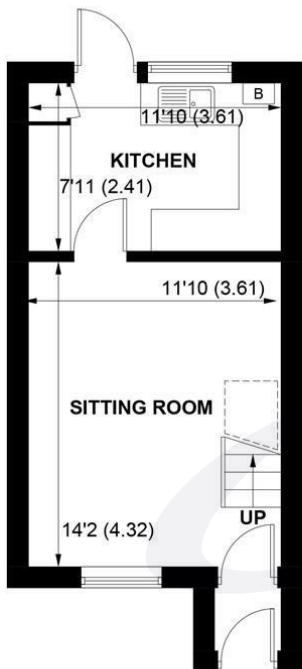
Current = D
Potential = B

Council Tax Band

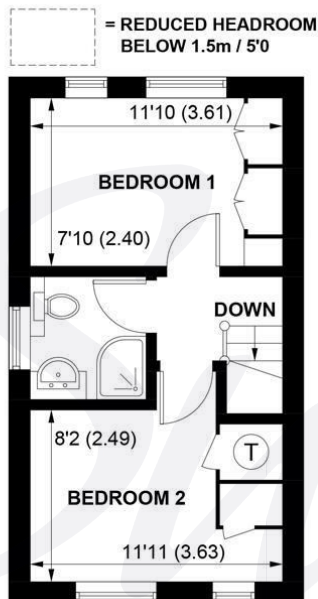
Band = C

Tenure - Freehold

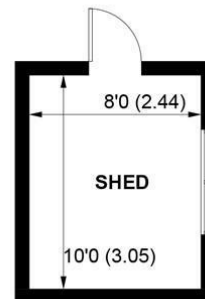




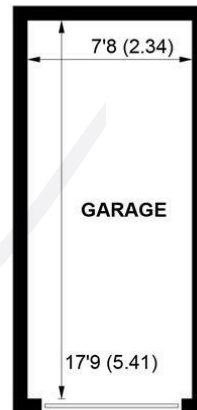
GROUND FLOOR



FIRST FLOOR



(NOT SHOWN IN ACTUAL
LOCATION / ORIENTATION)



(NOT SHOWN IN ACTUAL
LOCATION / ORIENTATION)

APPROXIMATE GROSS INTERNAL AREA = 550 SQ FT / 51.1 SQ M

GARAGE & SHED = 217 SQ FT / 20.2 SQ M

TOTAL = 767 SQ FT / 71.3 SQ M

NOT TO SCALE (For illustrative purposes only as defined by RICS Code of Measuring Practice) 2026 ©

Produced for Sims Williams



simswilliams.co.uk

CHICHESTER

8-9 Southgate

Sales 01243 787868

Lettings 01243 836055

chichester@simswilliams.co.uk

WALBERTON

5 Maple Parade

Sales 01243 551368

Lettings 01243 836055

walberton@simswilliams.co.uk

ARUNDEL

8a High Street

Sales 01903 885678

Lettings 01903 881133

arundel@simswilliams.co.uk

BOGNOR REGIS

46 High Street

Sales 01243 862626

Lettings 01243 836055

bognor-regis@simswilliams.co.uk

Viewing Strictly by arrangement via the vendor's agent Sims Williams 01243 787868. These particulars are believed to be correct but their accuracy is not guaranteed and they do not form part of any contract.